

02 Recessed Spots Fixed LED>The Retro Dark Light Range

10107Z/B/W



7W Recessed Dark Light LED spot IP20.

Supplied with Black & Brass reflectors.

Complete with 160mA driver.

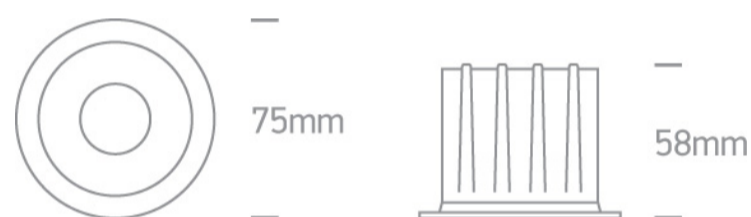
Complies with standard EN60598-1 and any other specific standards.



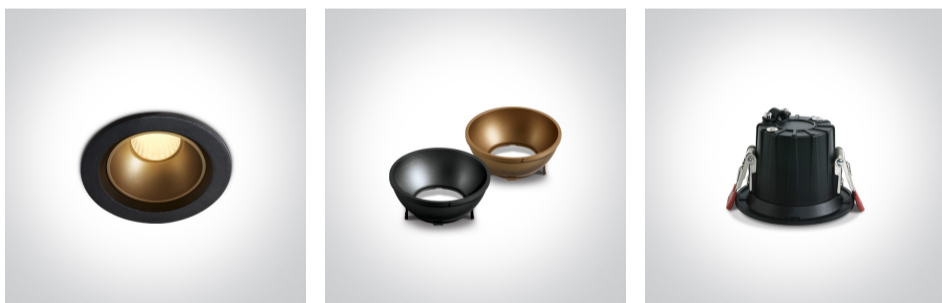
Downloads



Dimensions



Gallery




Physical Specification

Item Group	02 Recessed Spots Fixed LED
Family	The Retro Dark Light Range
Order Code	10107Z/B/W
Colour	Black
Material	Die Cast + Plastic
Shape	Circular
Height	58mm

Diameter	75mm
Cutout Hole Diameter	65mm
Recessed Ceiling	Yes
Depth Required	80mm
Indoor	Yes
Adjustable	No

Electrical Characteristics

Gear	External-Included
Fitting + Driver	
Input Voltage	220-240V
50 Hz	Yes
60 Hz	Yes
Safety Class	
Power(Watts)	7W
IP Rating	IP20
Light Source	LED built in
Dimmable	No
F Mark	

Fitting	
Input Type	Constant Current
Input Current	160mA
Voltage	39V
Safety Class	
Power(Watts)	6,2W
IP Rating	IP20
Light Source	LED built in
LED Type	COB
LED Brand	Cree

Gear

Gear Type

Led Driver

Input Voltage

220-240V

50 Hz

Yes

60 Hz

Yes

Power(Watts)

4-6,7W

Power Factor

0,5

Constant Current

Yes

Output

160mA

Voltage Range

24-42V

IP Rating

IP20

Safety Class



Dimmable

No

Housing Material

Plastic

Output Terminal

Cable

Brand

Lifud

Illumination Data

Colour Temperature

3000K

Lumen Output

560lm

Light Efficiency

80lm/W

CRI

80

Beam Angle

45°

Illumination Diagram



Dark Light

Yes

Packing Info

Box Length

11,5cm

Box Width	10cm
Box Height	6,5cm
Pcs/Carton	40
Barcode	5291889058991
HS Code	9405409900

Certification & Warranty

Warranty	3 Years
Weee Directive	Yes

switch to
one light!

one
LIGHT

