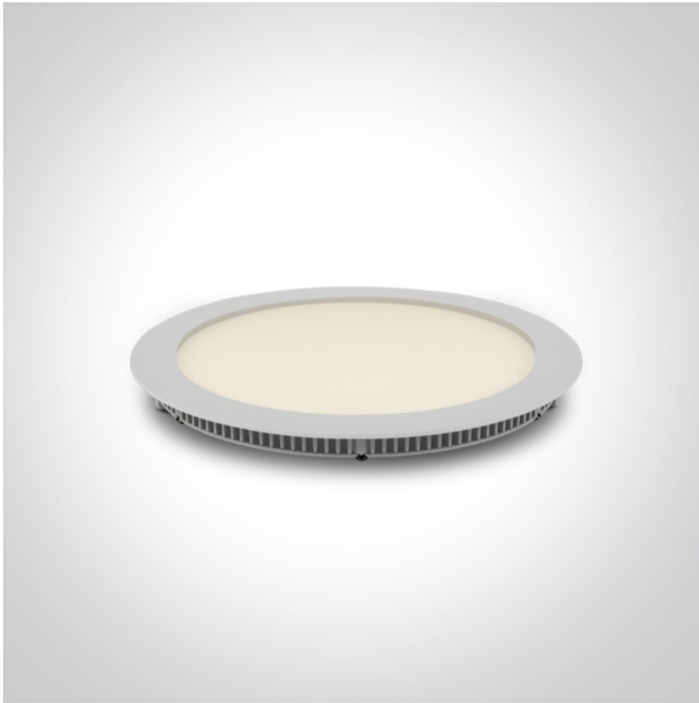


06 Downlights Fixed LED>The 18-30W Round Recessed Panels Die cast

10118FA/W/W



18W slim downlight LED, IP40, ideal for commercial applications such as offices, galleries and showrooms.

Supplied with 450mA non-dimmable LED driver.

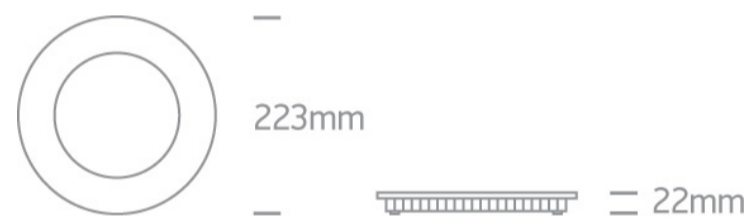
Complies with standard EN60598-1 and any other specific standards.



Downloads



Dimensions



Gallery



Related items



89024UT

Physical Specification

Item Group



06 Downlights Fixed LED

Family


The 18-30W Round Recessed Panels Die cast

| | |
|----------------------|-------------|
| Order Code | 10118FA/W/W |
| Colour | White |
| Material | Die Cast |
| Diffuser Material | Acrylic |
| Shape | Circular |
| Height | 22mm |
| Diameter | 223mm |
| Cutout Hole Diameter | 210mm |
| Recessed Ceiling | Yes |
| Depth Required | 50mm |
| Indoor | Yes |
| Adjustable | No |


Electrical Characteristics

| Gear | External-Included |
|------------------|---|
| Fitting + Driver | |
| Input Voltage | 220-240V |
| 50 Hz | Yes |
| 60 Hz | Yes |
| Safety Class |  |
| Power(Watts) | 18W |
| IP Rating | IP40 |
| Light Source | LED built in |
| Dimmable | No |
| F Mark |  |

| Fitting | |
|---------------|------------------|
| Input Type | Constant Current |
| Input Current | 450mA |
| Voltage | 38V |

| | |
|--------------|---|
| Safety Class |  |
| Power(Watts) | 17,1W |
| IP Rating | IP40 |
| Light Source | LED built in |
| LED Type | SMD 2835 |
| LED Brand | Epistar |
| LED Number | 96 |

Gear

| | |
|------------------|---|
| Gear Type | Led Driver |
| Input Voltage | 220-240V |
| 50 Hz | Yes |
| 60 Hz | Yes |
| Power(Watts) | 12,1-19W |
| Power Factor | 0,9 |
| Constant Current | Yes |
| 450mA | 27-42V |
| IP Rating | IP20 |
| Safety Class |  |
| Dimmable | No |
| Ambient Temp | 50°C |
| Operating Temp | 75°C |
| Housing Material | Plastic |
| Brand | Lifud |

Illumination Data

| | |
|--------------------|--------|
| Colour Temperature | 3000K |
| Lumen Output | 1080lm |
| Light Efficiency | 60lm/W |
| CRI | 80 |
| Beam Angle | 120° |



Packing Info

| | |
|------------|---------------|
| Box Length | 28cm |
| Box Width | 23,5cm |
| Box Height | 3,5cm |
| Box Weight | 0,575Kg |
| Pcs/Carton | 20 |
| Barcode | 5291889042792 |
| HS Code | 9405109890 |

Certification & Warranty

| | |
|------------------|-------------|
| Warranty | 2 Years |
| Average Lifetime | 30000 hours |
| Weee Directive | Yes |

switch to
one light!

one
LIGHT

