

06 Downlights Fixed LED>The Outdoor/Bathroom IP65 Range Die cast

**10120G/W/W**



20W LED recessed downlight, IP65. Suitable for Indoor/Outdoor installation.

Complete with 500mA driver.

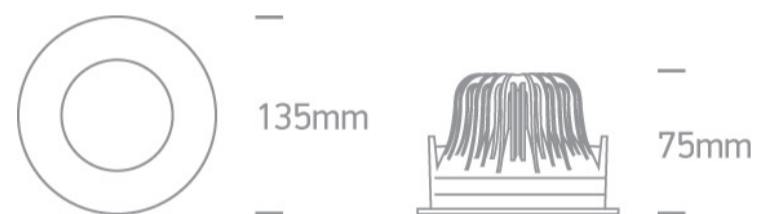
Complies with standard EN60598-1 and any other specific standards.



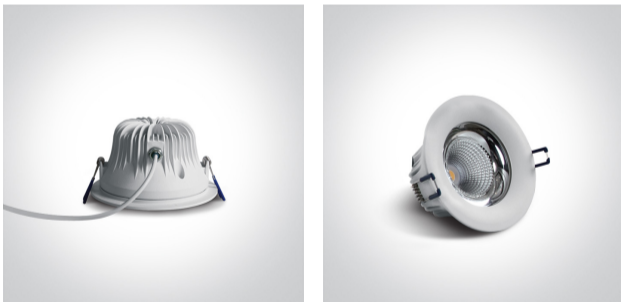
Downloads



Dimensions



Gallery






Physical Specification

Item Group	06 Downlights Fixed LED
Family	The Outdoor/Bathroom IP65 Range Die cast
Order Code	10120G/W/W
Colour	White
Material	Die Cast
Shape	Circular
Height	75mm


Diameter	135mm
Cutout Hole Diameter	120mm
Recessed Ceiling	Yes
Depth Required	105mm
Indoor	Yes
Outdoor	Yes
Adjustable	No

## Electrical Characteristics

Gear	External-Included
Fitting + Driver	
Input Voltage	220-240V
50 Hz	Yes
60 Hz	Yes
Safety Class	
Power(Watts)	20W
IP Rating	IP65
Light Source	LED built in
Dimmable	No
Cable Length	200cm
F Mark	


Fitting	
Input Type	Constant Current
Input Current	500mA
Voltage	37V
Safety Class	
Power(Watts)	18,5W
IP Rating	IP65
Light Source	LED built in

LED Type
LED Brand
F Mark

COB
Cree


## Gear

Gear Type
Input Voltage
50 Hz
60 Hz
Power(Watts)
Power Factor
Constant Current
500mA
IP Rating
Safety Class
Dimmable
Housing Material
Output Terminal
Brand

Led Driver
220-240V
Yes
Yes
12,5-20W
0,9
Yes
25-40V
IP20

No
Plastic
Cable
Lifud

## Illumination Data

Colour Temperature
Lumen Output
Light Efficiency
CRI
Beam Angle
Illumination Diagram

3000K
1880lm
94lm/W
80
60°


## Packing Info

Box Length
------------

15cm
------

Box Width	15cm
Box Height	10cm
Box Weight	0.640kg
Pcs/Carton	10
Barcode	5291889051893
HS Code	9405413990

#### Certification & Warranty

Warranty

3 years

switch to  
**one light!**

one  
LIGHT

