

06 Downlights Fixed LED>The Dark Light Dome Reflector Die cast

10122FD/W/C



22W LED Dark Light Dome Reflector, IP20.

Complete with 600mA driver.

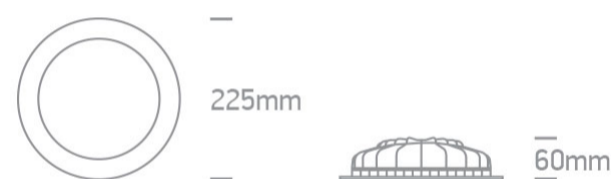
Complies with standard EN60598-1 and any other specific standards.



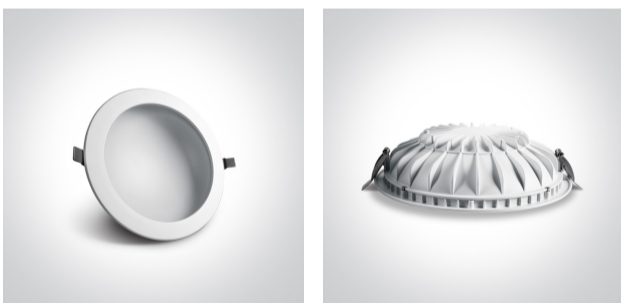
Downloads



Dimensions



Gallery






Physical Specification

Item Group	06 Downlights Fixed LED
Family	The Dark Light Dome Reflector Die cast
Order Code	10122FD/W/C
Colour	White
Material	Die Cast
Shape	Circular
Height	60mm

Diameter	225mm
Cutout Hole Diameter	210mm
Recessed Ceiling	Yes
Depth Required	90mm
Indoor	Yes
Adjustable	No

#### Electrical Characteristics

Gear	External-Included
Fitting + Driver	
Input Voltage	220-240V
50 Hz	Yes
60 Hz	Yes
Safety Class	
Power(Watts)	22W
IP Rating	IP20
Light Source	LED built in
Dimmable	No
F Mark	

Fitting	
Input Type	Constant Current
Input Current	600mA
Voltage	35V
Safety Class	
Power(Watts)	21W
IP Rating	IP20
Light Source	LED built in
LED Type	SMD 2835
LED Brand	Sanan

## Gear

Gear Type

Led Driver

Input Voltage

220-240V

50 Hz

Yes

60 Hz

Yes

Power(Watts)

15-21W

Power Factor

0,9

Constant Current

Yes

600mA

25-35V

IP Rating

IP20

Safety Class



Dimmable

No

Housing Material

Plastic

Output Terminal

Cable

Brand

Kegu

Protection

Short Circuit and Overload

## Illumination Data

Colour Temperature

4000K

Lumen Output

1550lm

Light Efficiency

70,45lm/W

CRI

80

Illumination Diagram



Dark Light

Yes

## Packing Info

Box Length

23,5cm

Box Width

23cm

Box Height	6,5cm
Box Weight	0,58Kg
Pcs/Carton	20
Barcode	5291889051633
HS Code	9405409900

#### Certification & Warranty

Warranty	2 Years
Average Lifetime	30000hrs
Weee Directive	Yes

switch to  
**one light!**

one  
LIGHT

