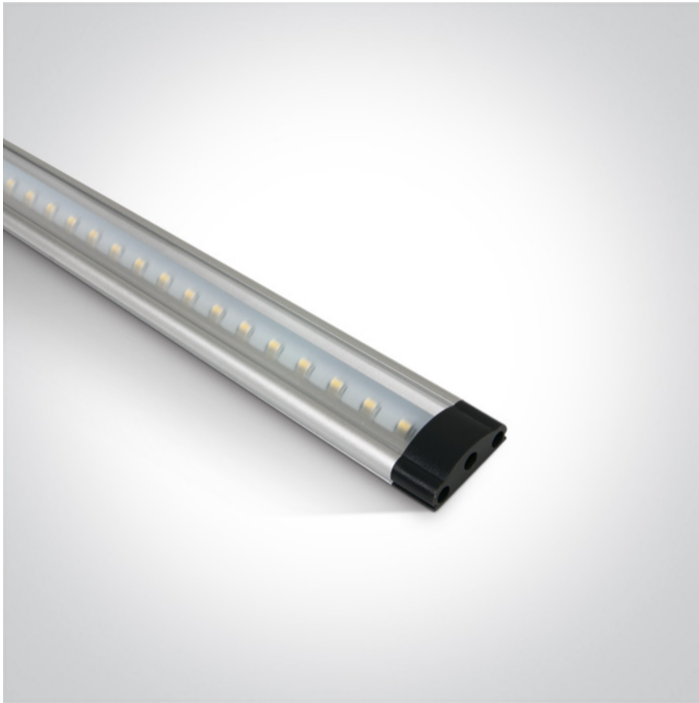


08 Strips & Profiles > The LED Shelf System Aluminium + PC

38103/W



3W LED Shelf system, IP20 .

Requires 24V DC constant voltage LED driver.

Complies with standard EN60598-1 and any other specific standards.



Downloads



Dimensions



Accessories



38101A



38101B



38101C



38101D



38102A



38102B



38102C

Physical Specification

Item Group	08 Strips & Profiles
Family	The LED Shelf System Aluminium + PC
Order Code	38103/W
Material	Aluminium
Diffuser Material	PC
Shape	Rectangular
Length	300mm
Width	25mm
Height	9mm
Surface Ceiling	Yes
Surface Wall	Yes
Indoor	Yes


Electrical Characteristics

Fitting

Input Type	Constant Voltage
Input Voltage	24V DC
Safety Class	
Power(Watts)	3W
IP Rating	IP20
Light Source	LED built in
LED Type	SMD 3014
LED Brand	Epistar
F Mark	

Illumination Data

Colour Temperature	3000K
Lumen Output	225lm

Light Efficiency	75lm/W
CRI	80
Beam Angle	90°
Illumination Diagram	

Packing Info

Box Length	30cm
Box Width	3cm
Box Height	3,5cm
Box Weight	0,111Kg
Pcs/Carton	100
Barcode	5291889038788
HS Code	9405409900

Certification & Warranty

Warranty	2 Years
Weee Directive	Yes

switch to
one light!

one
LIGHT

