

21 Industrial & Floodlights>The High Power IP65 LED Range Single

38158M/C



IP65 LED fitting to replace T8 IP65 traditional waterproof fluorescent. Stainless steel clips included. Polycarbonate body and diffuser.

Supplied with non-dimmable LED driver.

Complies with standard EN60598-1 and any other specific standards.



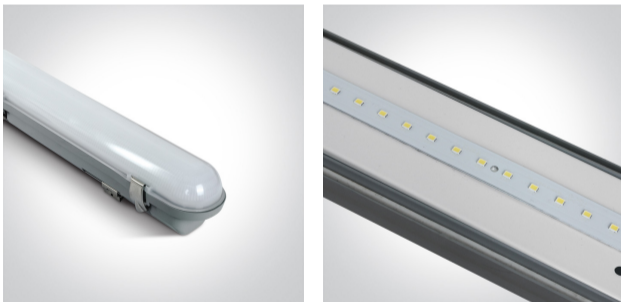
Downloads



Dimensions



Gallery





Physical Specification


Item Group	21 Industrial & Floodlights
Family	The High Power IP65 LED Range Single
Order Code	38158M/C
Colour	Grey
Material	PC
Diffuser Material	PC
Shape	Rectangular

Length	1515mm
Width	84mm
Height	80mm
Surface Ceiling	Yes
Surface Wall	Yes
Indoor	Yes
Outdoor	Yes
Adjustable	No
IK Rating	8


## Electrical Characteristics

Gear	Built In
Fitting + Driver	
Input Voltage	220-240V
50 Hz	Yes
60 Hz	Yes
Safety Class	
Power(Watts)	40W
IP Rating	IP65
Light Source	LED built in
Dimmable	No
F Mark	

Fitting	
Input Type	Constant Current
Input Current	700mA
Voltage	54V
Power(Watts)	37,8W
IP Rating	IP65
Light Source	LED built in

LED Type	SMD 2835
LED Brand	Everlight
<b>Gear</b>	
Gear Type	Led Driver
Input Voltage	220-240V
50 Hz	Yes
60 Hz	Yes
Power(Watts)	14-42W
Power Factor	0,9
Constant Current	Yes
700mA	20-54V
IP Rating	IP20
Safety Class	
Dimmable	No
Housing Material	Plastic
Output Terminal	Connector
Brand	Tridonic

### Illumination Data

Colour Temperature	4000K
Lumen Output	4000lm
Light Efficiency	100lm/W
CRI	80
Illumination Diagram	

### Packing Info

Box Length	152cm
Box Width	8,3cm
Box Height	9cm

Box Weight	1,6Kg
Pcs/Carton	9
Barcode	5291889055013
HS Code	9405104090

#### Certification & Warranty

Warranty	3 Years
Weee Directive	Yes

switch to  
**one light!**

one  
LIGHT

