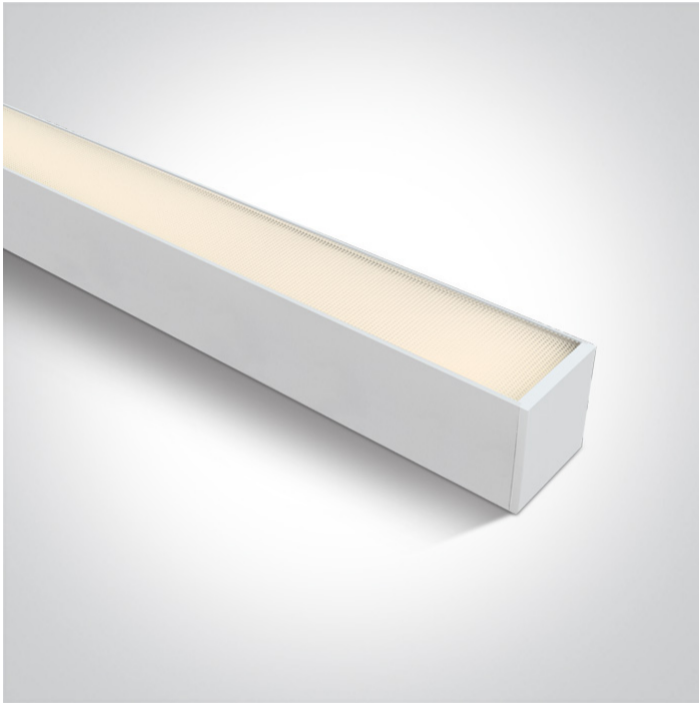


11 Office & Kitchen > LED Linear Profiles Large size

## 38160A/W/W



40W UGR19 Surface and suspended linear LED with diffuser, ideal for offices. Complete with 1000mA driver , 4pcs fixing clips & 4pcs connectors .

Complies with standard EN60598-1 and any other specific standards.



### Downloads



### Dimensions



### Gallery



### Accessories





050170

## Physical Specification

Item Group	11 Office & Kitchen
Family	LED Linear Profiles Large size
Order Code	38160A/W/W
Colour	White
Material	Aluminium
Diffuser Material	PC
Shape	Rectangular
Length	1200mm
Width	75mm
Height	75mm
Surface Ceiling	Yes
Suspended Ceiling	Yes
Indoor	Yes
Adjustable	No


## Electrical Characteristics

Gear	Built In
Fitting + Driver	
Input Voltage	220-240V
50 Hz	Yes
60 Hz	Yes
Safety Class	
Power(Watts)	40W
IP Rating	IP20
Light Source	LED built in
Dimmable	No
Cable Length	300cm
F Mark	


## Fitting

Input Type	Constant Current
Input Current	1000mA
Voltage	38V
Power(Watts)	38W
IP Rating	IP20
Light Source	LED built in
LED Type	SMD 2835
LED Brand	Epistar

## Gear

Gear Type	Led Driver
Input Voltage	220-240V
50 Hz	Yes
60 Hz	Yes
Power(Watts)	28-40W
Power Factor	0,9
Constant Current	Yes
1000mA	28-40V
IP Rating	IP20
Safety Class	
Dimmable	No
Brand	AGT

## Illumination Data

Colour Temperature	3000K
Lumen Output	3400lm
Light Efficiency	85lm/W
CRI	90
Illumination Diagram	

## Packing Info

Box Weight

3.166kg

Pcs/Carton

12

Barcode

5291889067993

HS Code

9405413990

## Certification &amp; Warranty

Warranty

3 years

switch to  
**one light!**

one  
LIGHT

