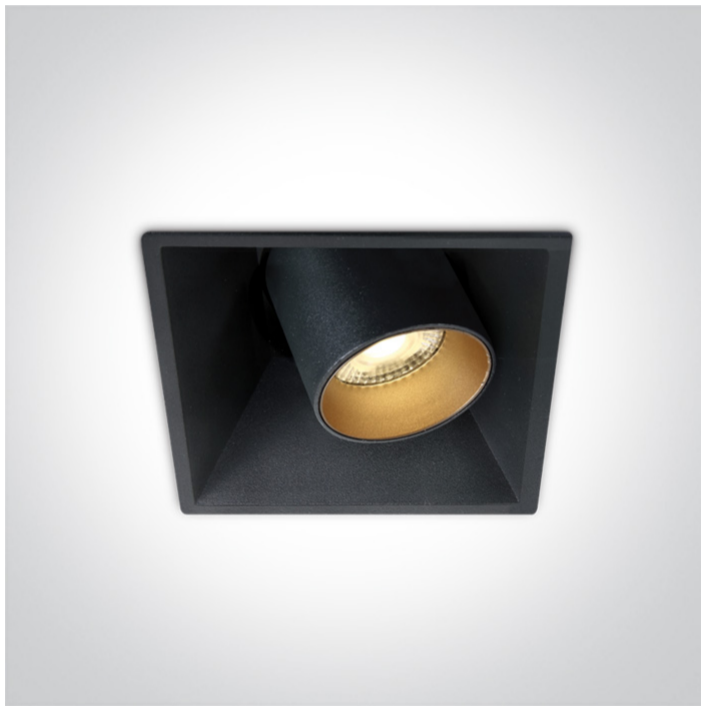


04 Recessed Spots Adjustable LED>The COB Recessed Cylinders

## 51111C/B/W



11W COB LED recessed adjustable spot, for general lighting applications.

Supplied with Black & Brass reflectors.

Complete with 250mA driver.

Complies with standard EN60598-1 and any other specific standards.



### Downloads



### Dimensions



### Gallery






### Physical Specification

Item Group	04 Recessed Spots Adjustable LED
Family	The COB Recessed Cylinders
Order Code	51111C/B/W
Colour	Black
Material	Die Cast
Shape	Rectangular
Length	90mm


Width	90mm
Height	98mm
Cutout Hole Width	85mm
Cutout Hole Length	85mm
Recessed Ceiling	Yes
Depth Required	110mm
Indoor	Yes
Adjustable	2 Directions

## Electrical Characteristics

Gear	External-Included
Fitting + Driver	
Input Voltage	220-240V
50 Hz	Yes
60 Hz	Yes
Safety Class	
Power(Watts)	11W
IP Rating	IP20
Light Source	LED built in
Dimmable	No
F Mark	


Fitting	
Input Type	Constant Current
Input Current	250mA
Voltage	37V
Safety Class	
Power(Watts)	9,25W
IP Rating	IP20
Light Source	LED built in

LED Type
LED Brand
LED Number
F Mark

COB
Luminus
1



### Gear

Gear Type
Input Voltage
50 Hz
60 Hz
Power(Watts)
Power Factor
Constant Current
250mA
IP Rating
Safety Class
Dimmable
Housing Material
Output Terminal
Brand

Led Driver
220-240V
Yes
Yes
7,5-12W
0,5
Yes
30-40V
IP20

No
Plastic
Cable
KEGU

### Illumination Data

Colour Temperature
Lumen Output
Light Efficiency
CRI
Beam Angle
Illumination Diagram
Dark Light

3000K
820lm
74,5lm/W
90
38°

Yes

### Packing Info

Box Length	12cm
Box Width	12cm
Box Height	9,5cm
Box Weight	0.400kg
Pcs/Carton	20
Barcode	5291889059486
HS Code	9405413990

#### Certification & Warranty

Warranty

5 years

switch to  
**one light!**

one  
LIGHT

