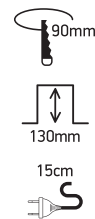
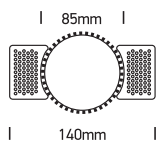


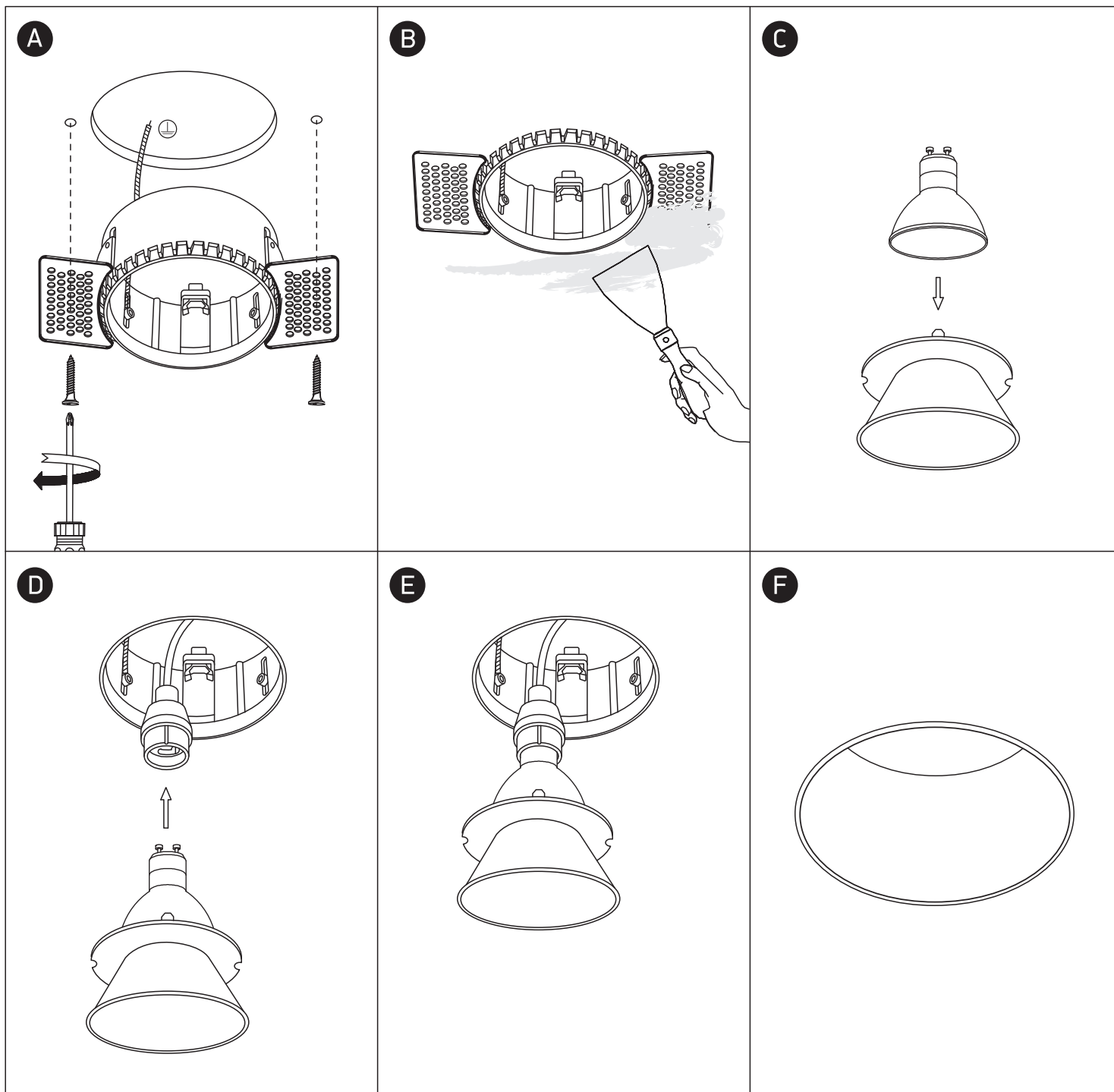
# INSTALLATION MANUAL

## 10105RM



100-240V | MR16 | GU10 | 10W | IP20  
Trimless | Die cast body + plastic reflector

Reflector must be ordered separately.  
Order code 050099.



### Warnings:

1. Make sure that the product is installed properly before connecting to electricity.
2. Do not cover the fitting.
3. Maintenance and installation should only be carried out by a professional electrician.