

INSTALLATION MANUAL

10110BX/./V

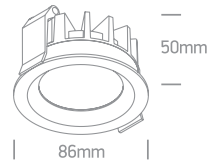
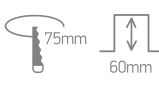
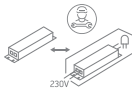
LED
BUILT IN



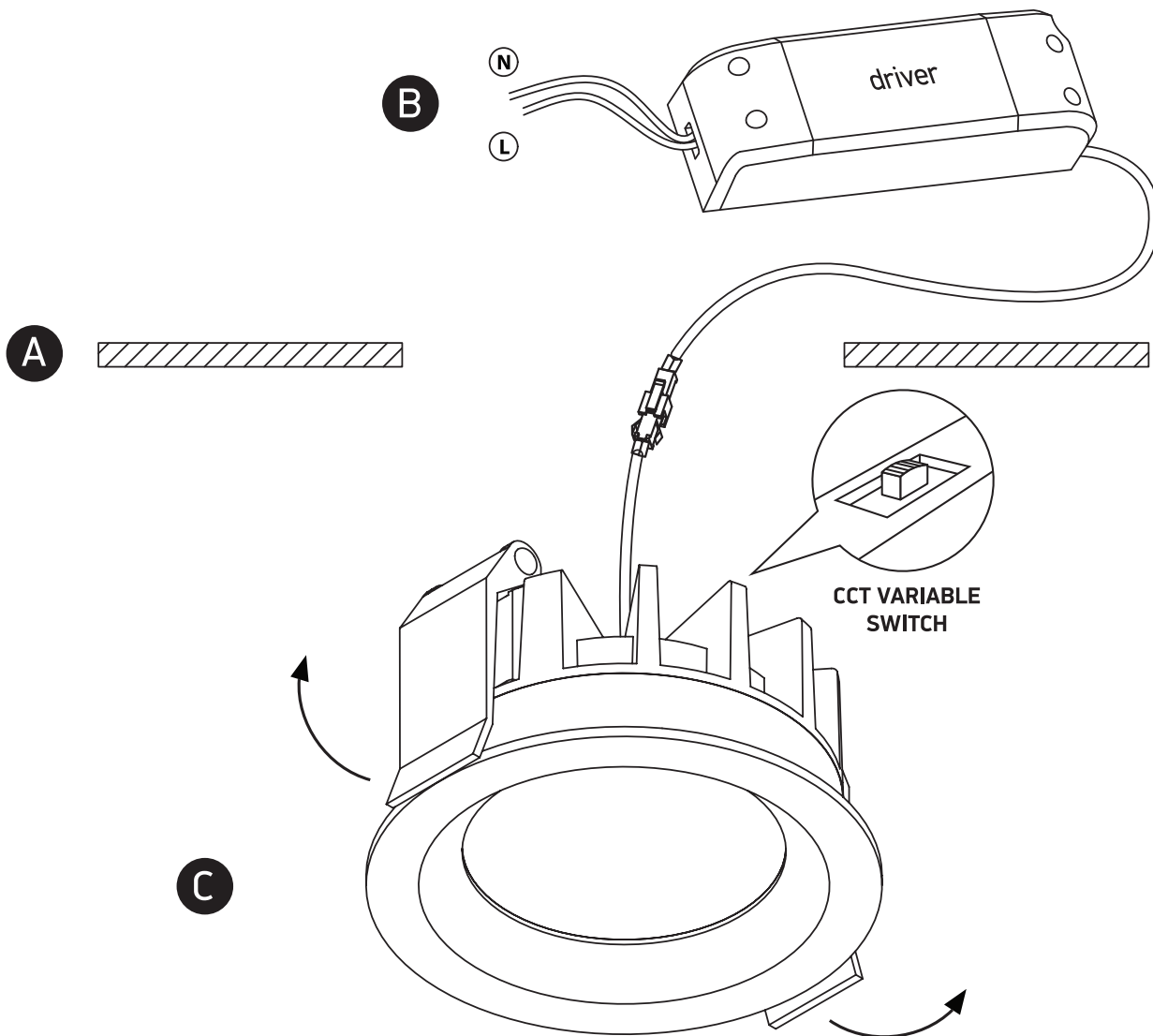
90
CRI



230V | SMD | CCT V | 10W | IP54 | Aluminium
Complete with 250mA driver.



one
LIGHT



Warnings:

1. Make sure that the product is installed properly before connecting to electricity.
2. Do not cover the fitting.
3. Maintenance and installation should only be carried out by a professional electrician.