

# INSTALLATION MANUAL

10112BTR

**ecolight**

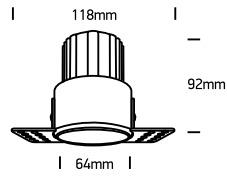


**DARK LIGHT**

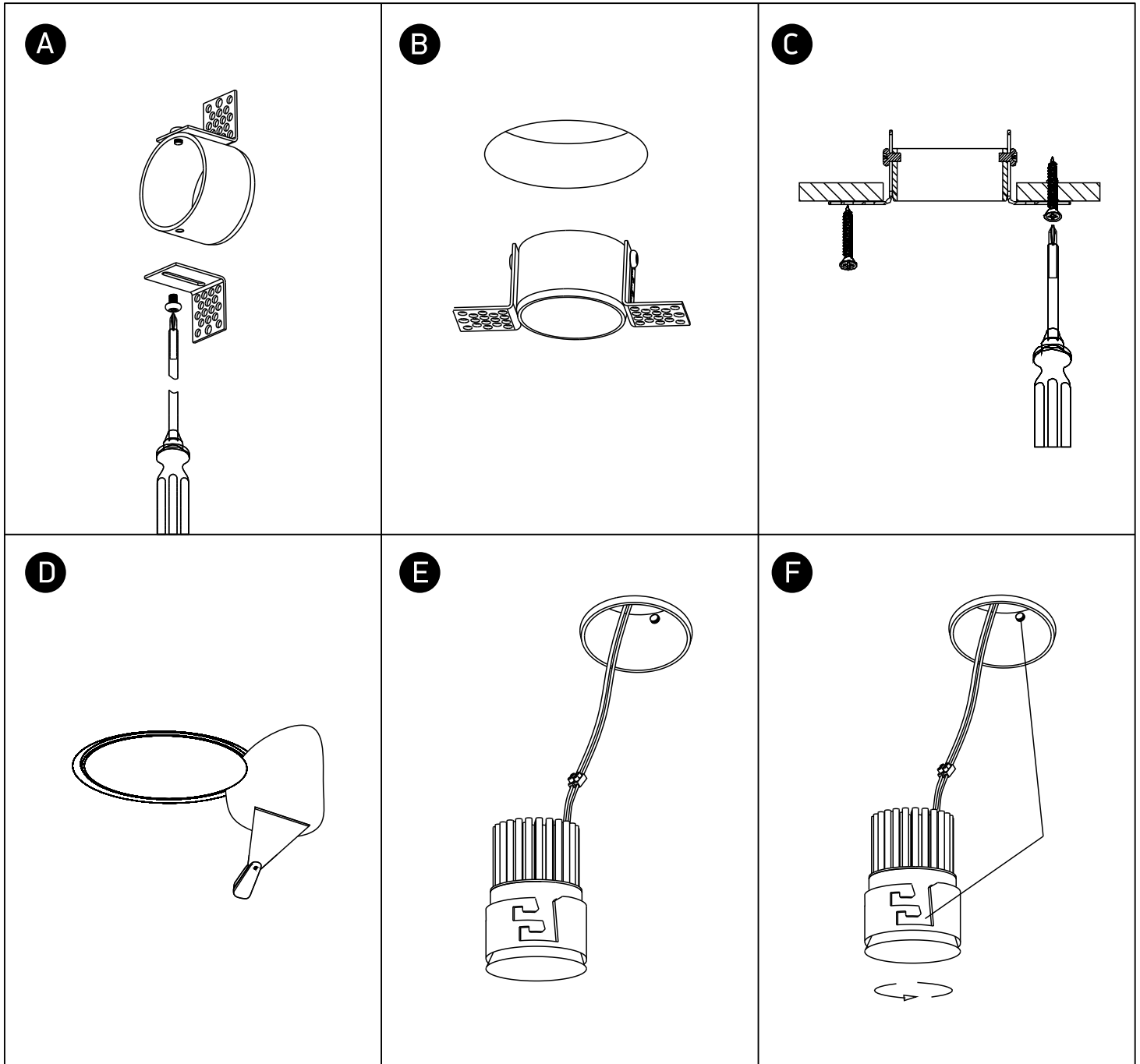


700mA | COB LED | 12W | IP20 | Trimless | Aluminium  
Requires 700mA driver.

**90 CRI**



**one**  
LIGHT



## Warnings:

1. Make sure that the product is installed properly before connecting to electricity.
2. Do not cover the fitting.
3. Maintenance and installation should only be carried out by a professional electrician.