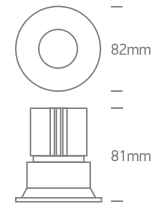


INSTALLATION MANUAL

10112TP/./V

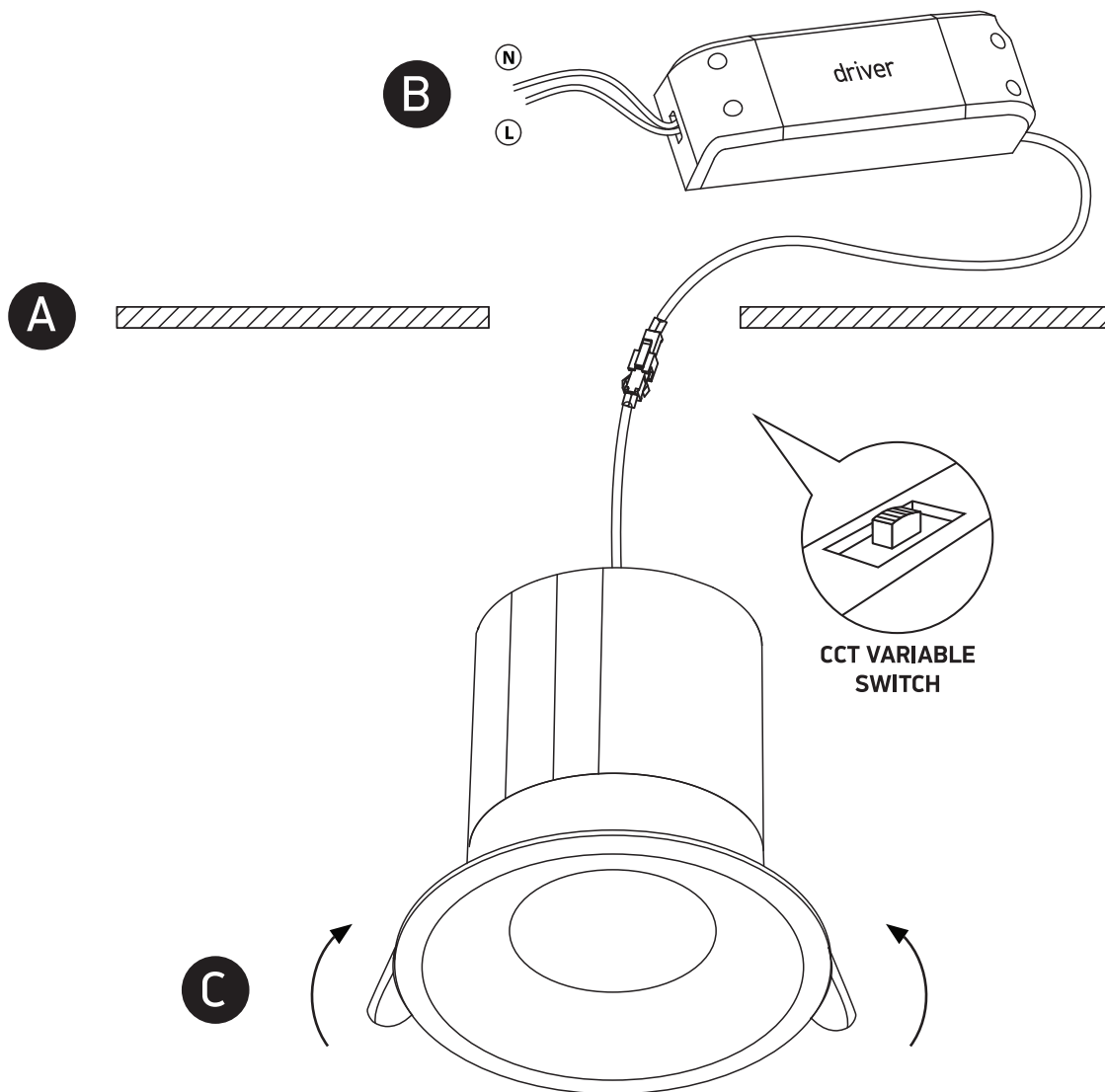


700mA | COB | CCT V | 12W | IP65 | Aluminium
Requires 700mA driver.

90
CRI



one
LIGHT



Warnings:

1. Make sure that the product is installed properly before connecting to electricity.
2. Do not cover the fitting.
3. Maintenance and installation should only be carried out by a professional electrician.

www.1-light.eu