

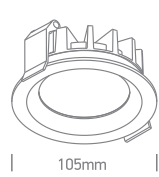
INSTALLATION MANUAL

10115BX/./V

LED
BUILT IN

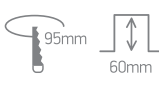
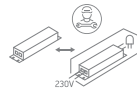


90
CRI

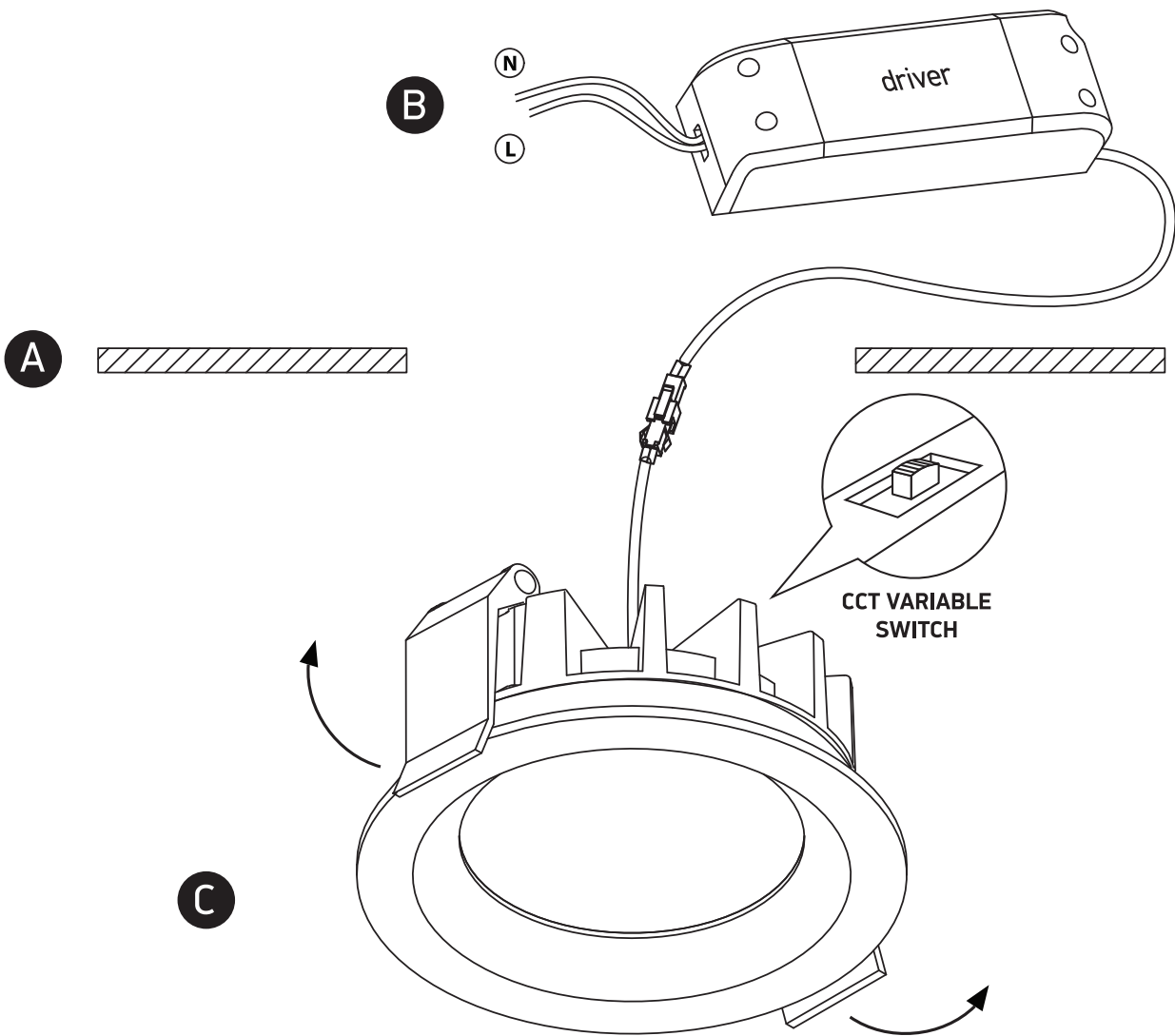


50mm

230V | SMD | CCT V | 15W | IP54 | Aluminium
Complete with 350mA driver.



one
LIGHT



Warnings:

1. Make sure that the product is installed properly before connecting to electricity.
2. Do not cover the fitting.
3. Maintenance and installation should only be carried out by a professional electrician.