

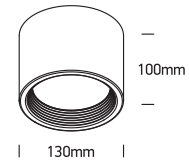
# INSTALLATION MANUAL

12115L

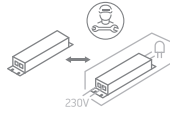
**ecolight**



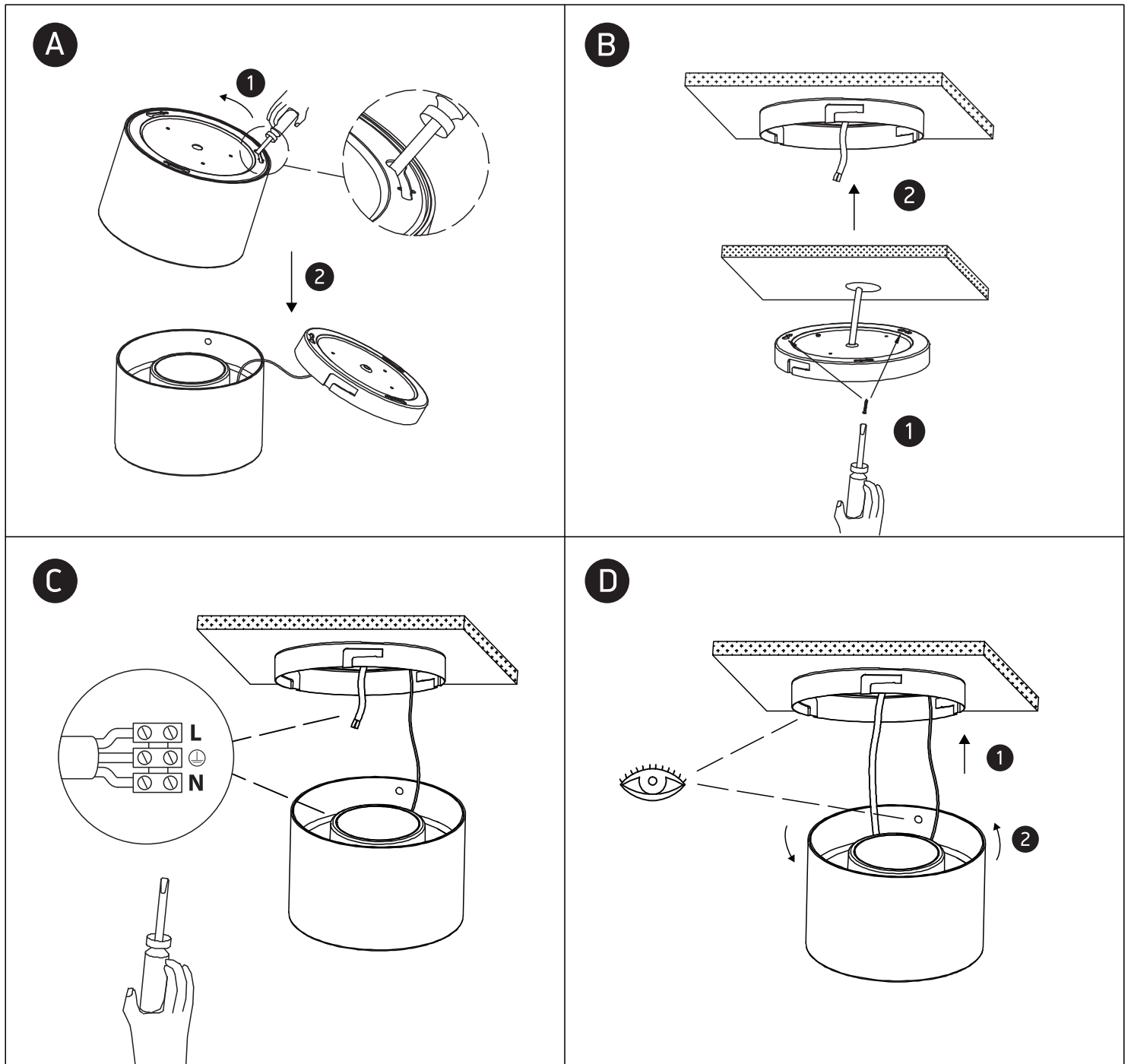
80 CRI



230V | SMD 2835 | 15W | IP40 | Aluminium  
Complete with 350mA driver.



**one**  
LIGHT



## Warnings:

1. Make sure that the product is installed properly before connecting to electricity.
2. Do not cover the fitting.
3. Maintenance and installation should only be carried out by a professional electrician.