

INSTALLATION MANUAL

38114N/V

LED
BUILT IN

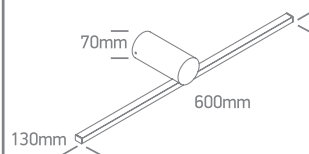


230V | 14W | SMD LED | IP44 | Aluminium + PC
Complete with driver 350mA.

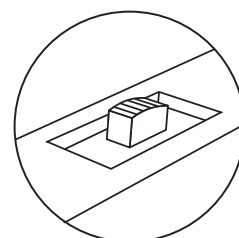
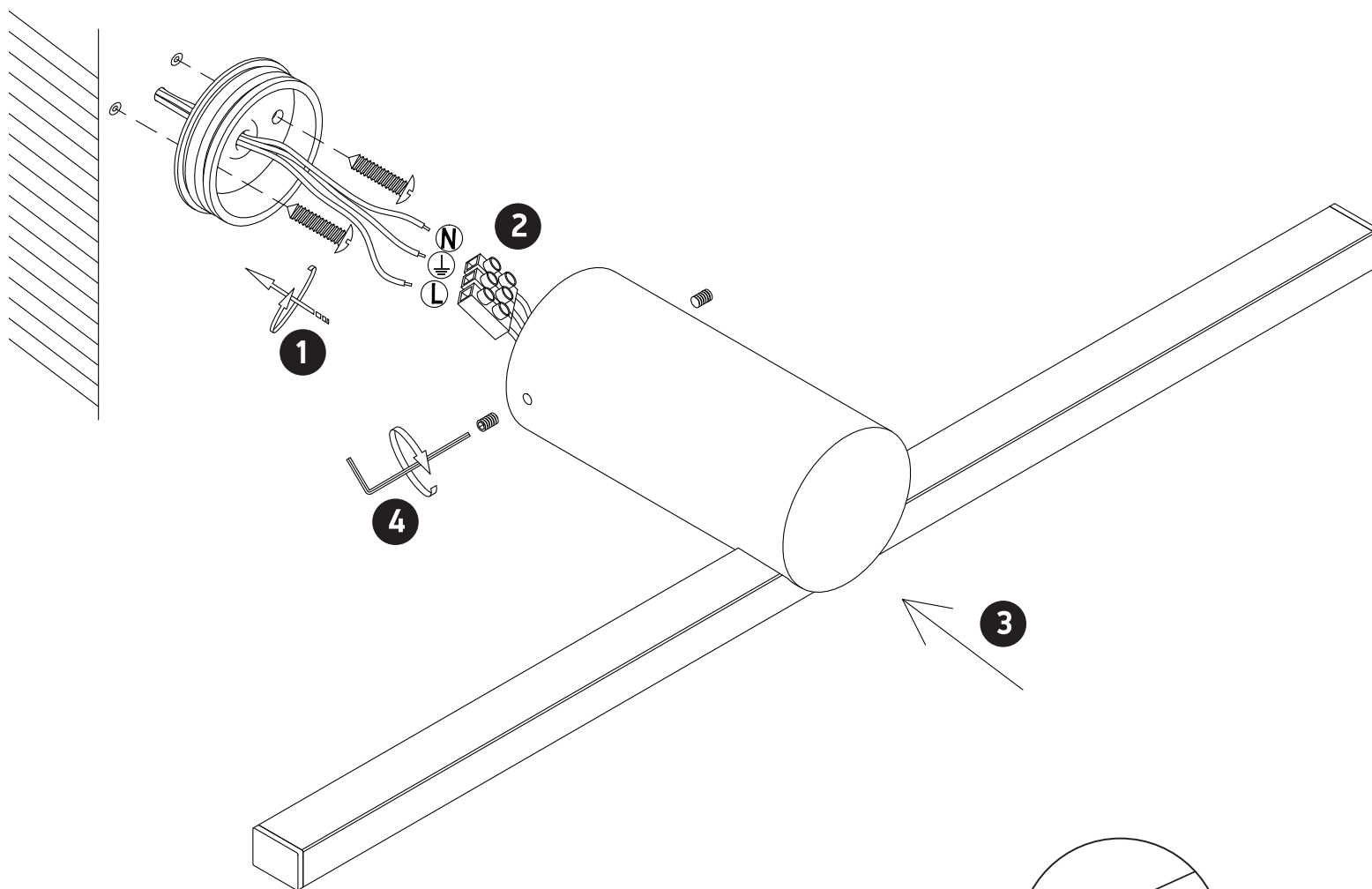
90
CRI



L70B50
36000 Hrs



one
LIGHT



CCT VARIABLE
SWITCH

Warnings:

1. Make sure that the product is installed properly before connecting to electricity.
2. Do not cover the fitting.
3. Maintenance and installation should only be carried out by a professional electrician.

www.1-light.eu