

INSTALLATION MANUAL

38150B/./V

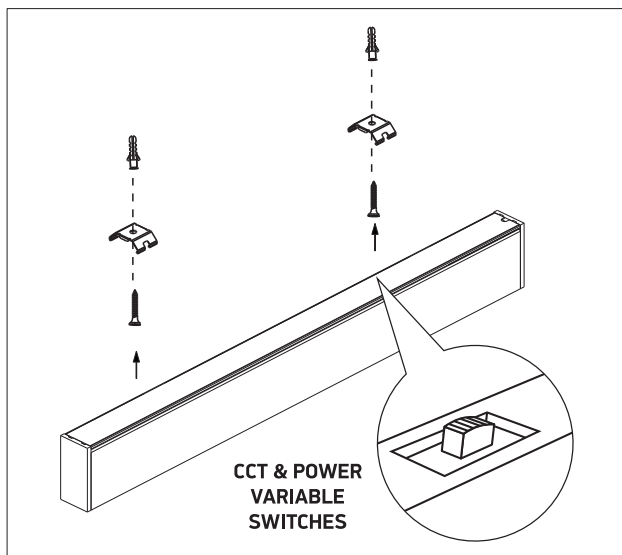


230V | SMD LED | 48LEDs | 40W PV | IP20 | Aluminium
Complete with PV driver / Can be connected in line.
Optional suspension kit 050170.

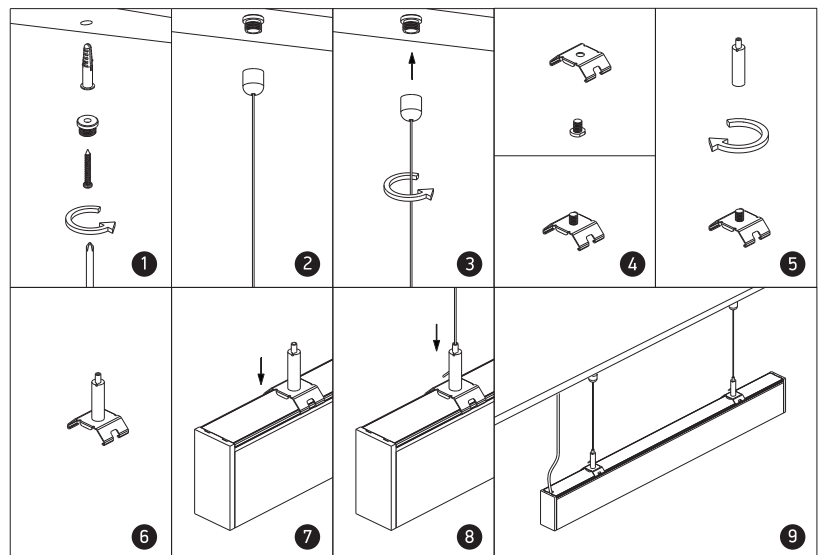


one
LIGHT

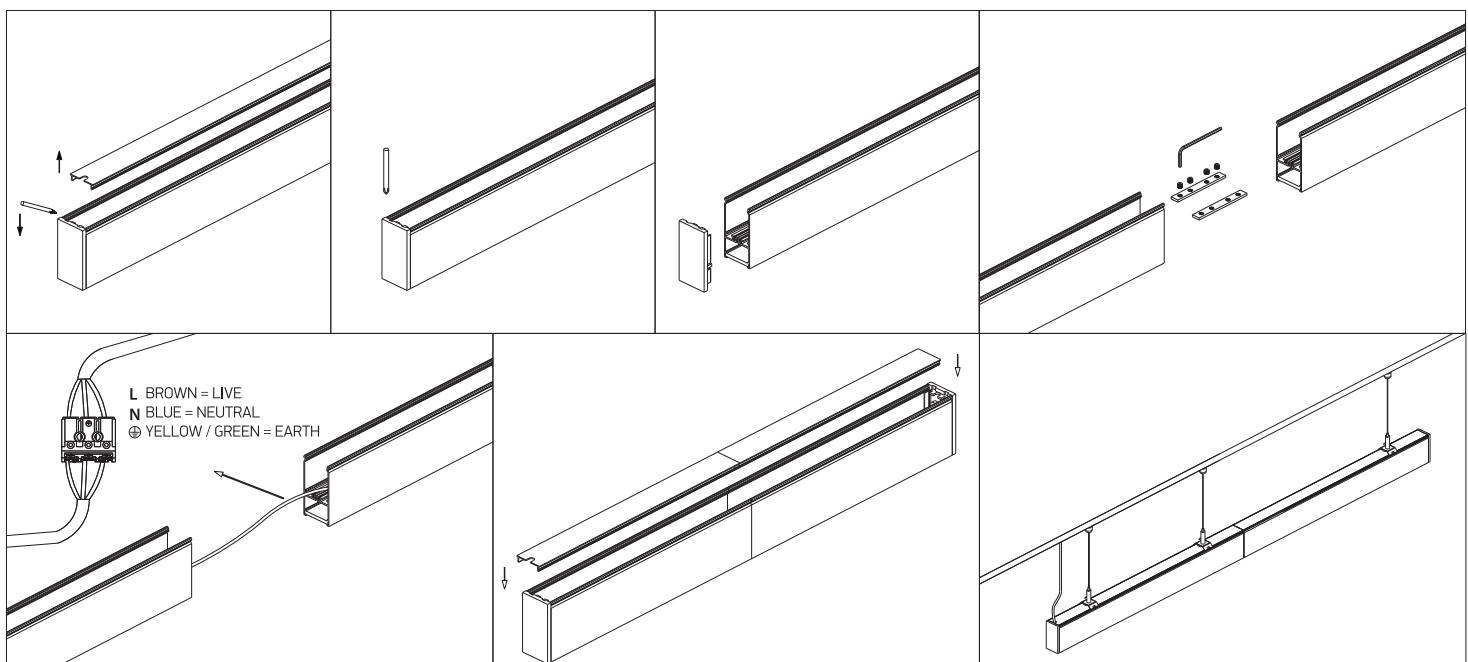
A SURFACE INSTALLATION



B SUSPENDED INSTALLATION



C CONNECTION



Warnings:

1. Make sure that the product is installed properly before connecting to electricity.
2. Do not cover the fitting.
3. Maintenance and installation should only be carried out by a professional electrician.