

INSTALLATION MANUAL

38150C/V

LED
BUILT IN



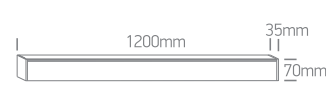
UGR19



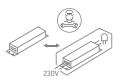
NOT
DIMMABLE

230V | SMD LED | 40W PV | 24LEDs + Diffuser | IP20 | Aluminium
Complete with PV driver / Can be connected in line.
Optional suspension kit 050170.

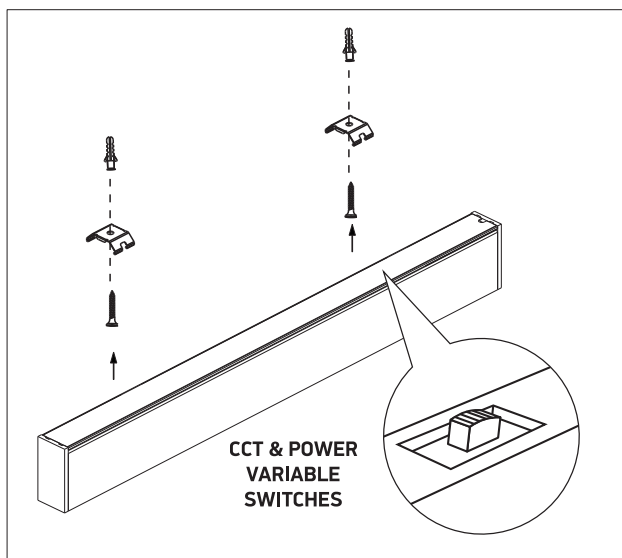
90
CRI



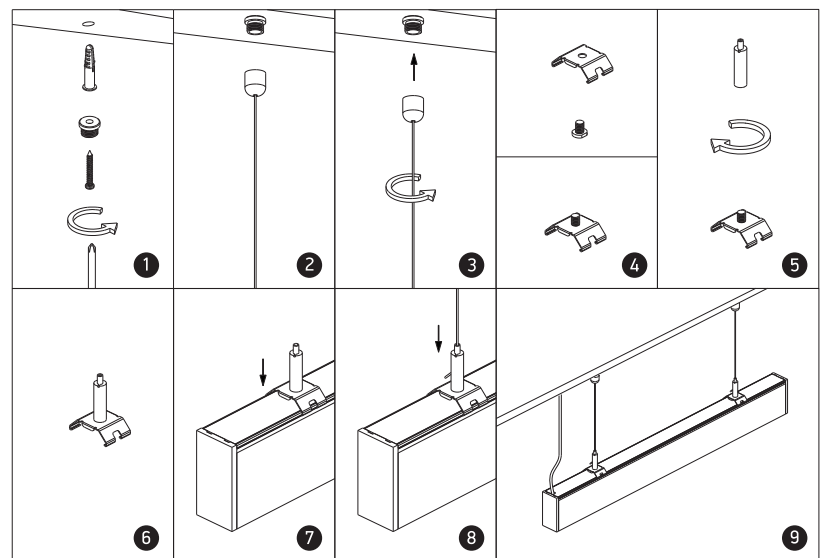
one
LIGHT



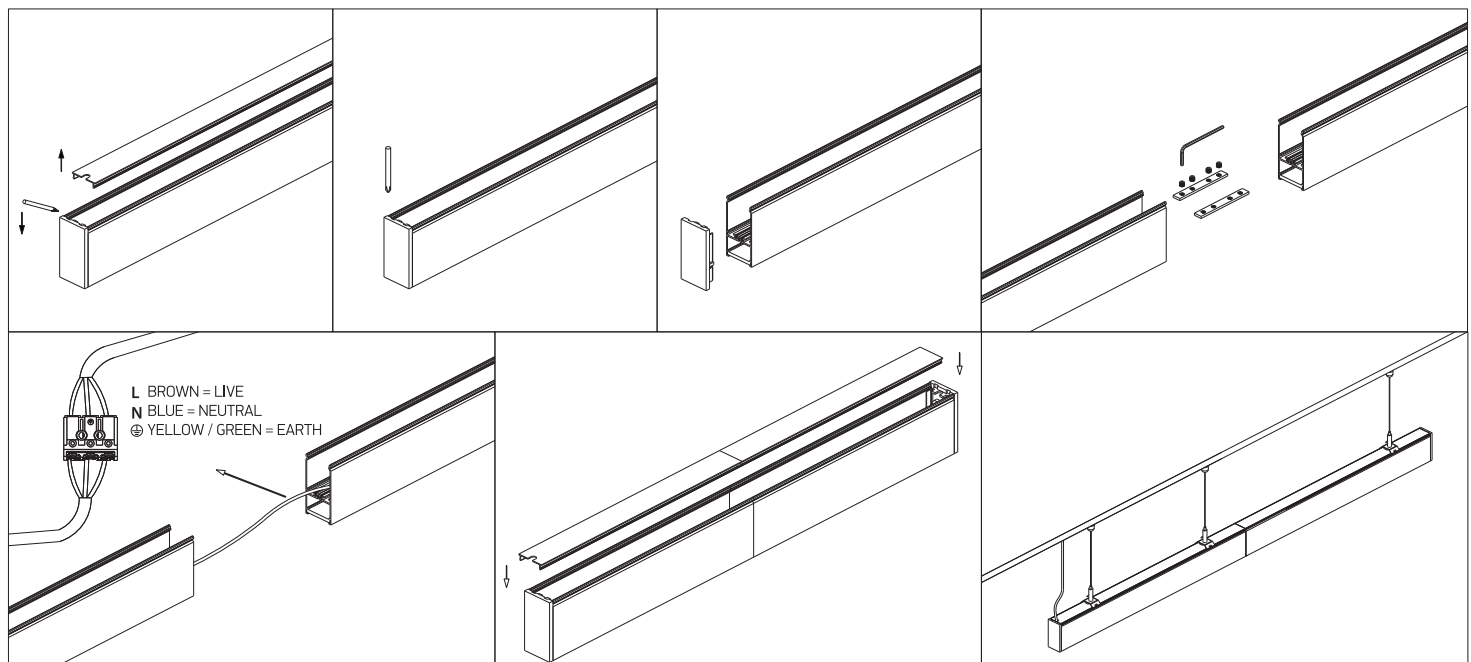
A SURFACE INSTALLATION



B SUSPENDED INSTALLATION



C CONNECTION



Warnings:

1. Make sure that the product is installed properly before connecting to electricity.
2. Do not cover the fitting.
3. Maintenance and installation should only be carried out by a professional electrician.