

# INSTALLATION MANUAL

38161A/V

LED  
BUILT IN



UGR19



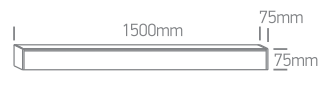
CE EAC UK CA



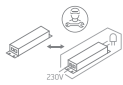
230V | SMD LED | 50W PV | IP20 | Diffuser | Aluminium  
Complete with PV driver / Can be connected in line.  
Optional suspension kit 050170.

90  
CRI

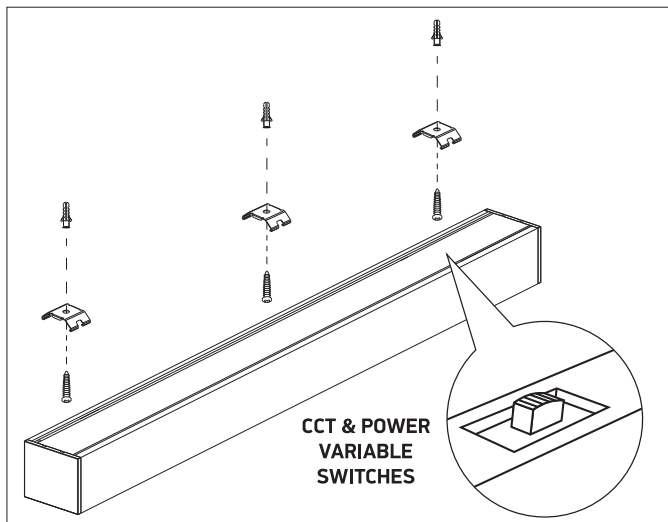
300cm



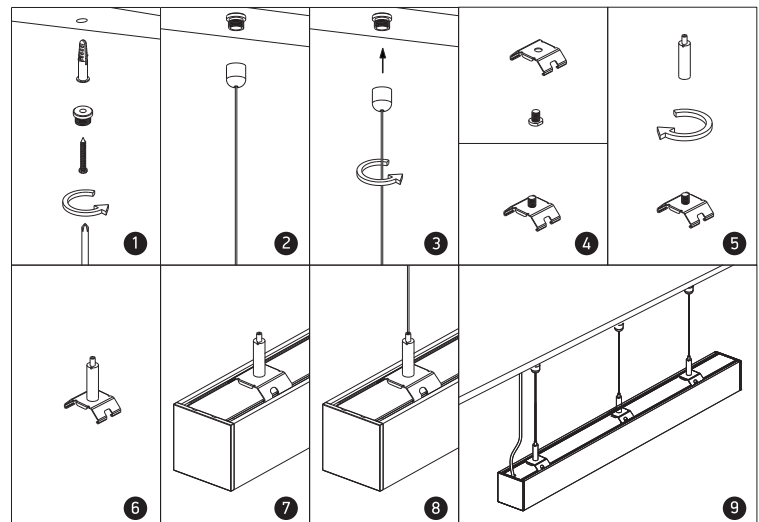
one  
LIGHT



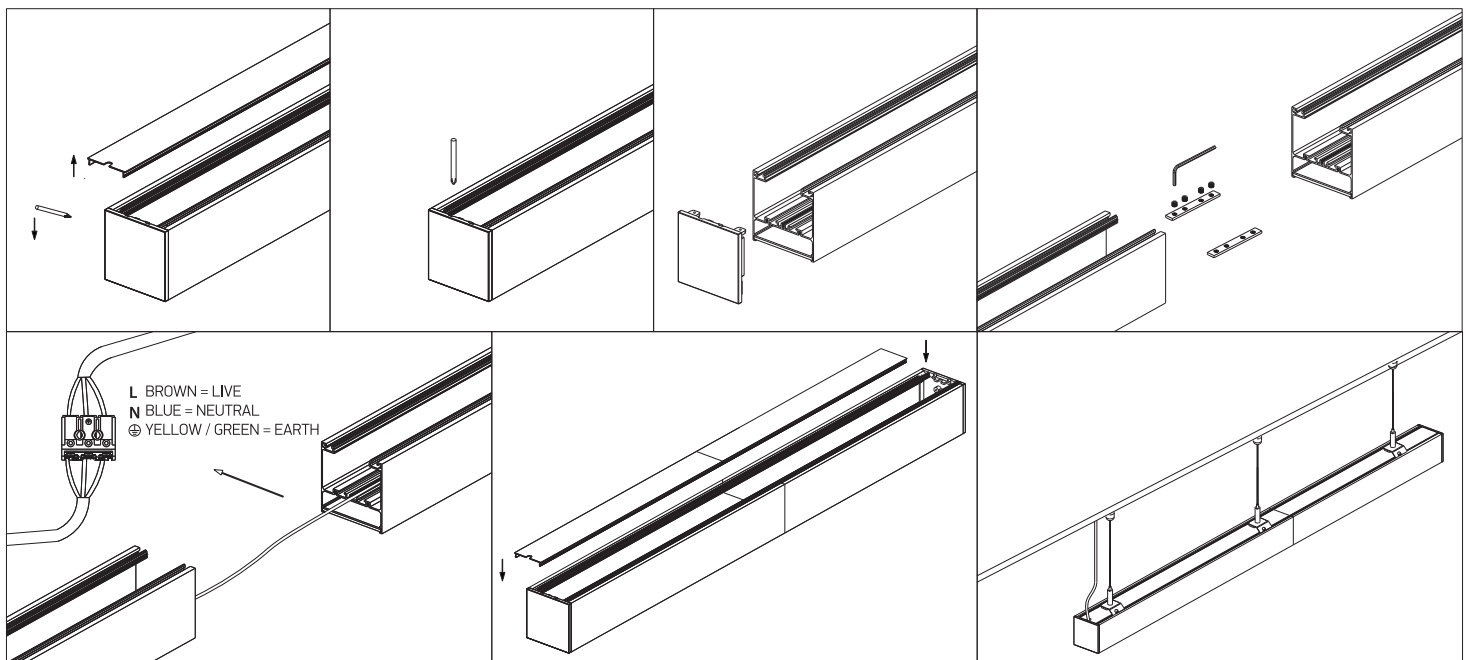
## A SURFACE INSTALLATION



## B SUSPENDED INSTALLATION



## C CONNECTION



### Warnings:

1. Make sure that the product is installed properly before connecting to electricity.
2. Do not cover the fitting.
3. Maintenance and installation should only be carried out by a professional electrician.

[www.1-light.eu](http://www.1-light.eu)