

# INSTALLATION MANUAL

42126BA

LED  
BUILT IN



DARK  
LIGHT

CE ENEC

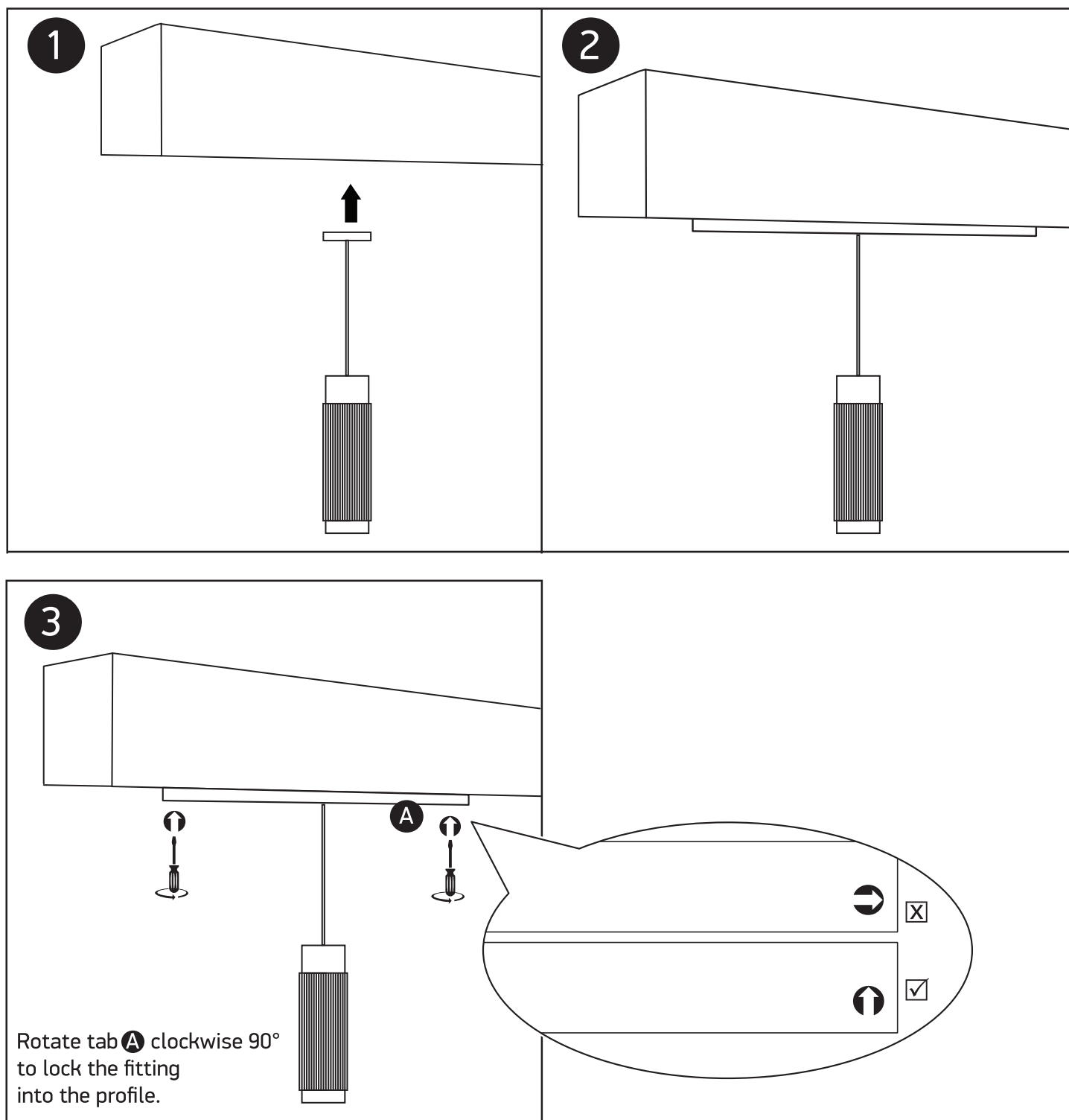
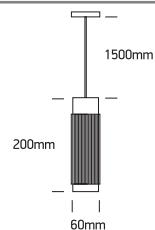
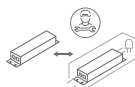
UK  
CA

RoHS  
COMPLIANT



12W | LED | 48V DC | IP20 | Aluminium

90  
CRI



## Warnings:

1. Make sure that the product is installed properly before connecting to electricity.
2. Do not cover the fitting.
3. Maintenance and installation should only be carried out by a professional electrician.