

# INSTALLATION MANUAL

42142L/./V

LED  
BUILT IN



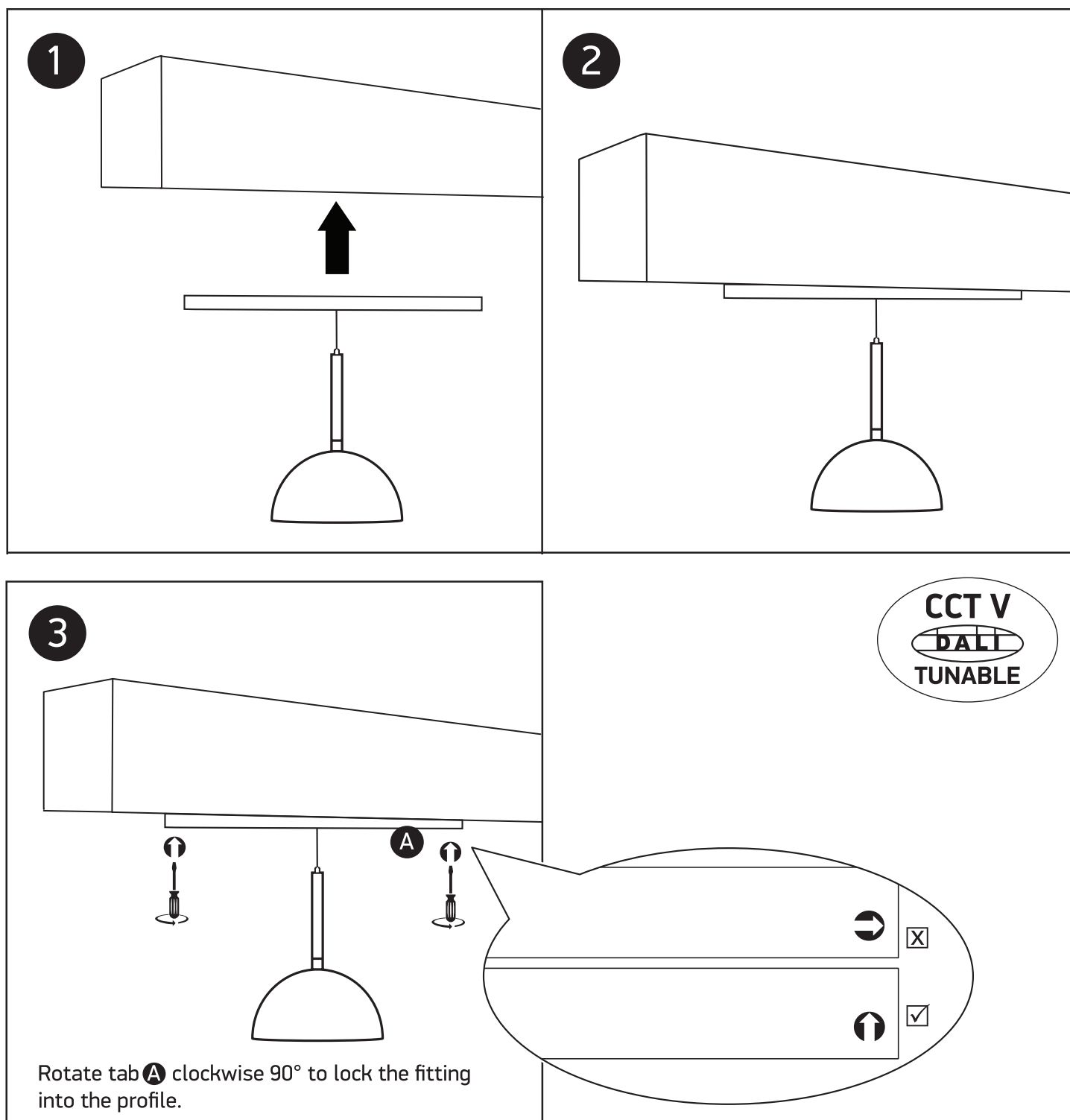
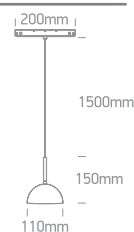
10W | LED | DT8 | CCT V | 48V | IP20 | Aluminium

P&P  
✓

MINI  
✓

MIDI  
✓

MAXI  
✓



Rotate tab **A** clockwise 90° to lock the fitting into the profile.

## Warnings:

1. Make sure that the product is installed properly before connecting to electricity.
2. Do not cover the fitting.
3. Maintenance and installation should only be carried out by a professional electrician.

[www.1-light.eu](http://www.1-light.eu)