

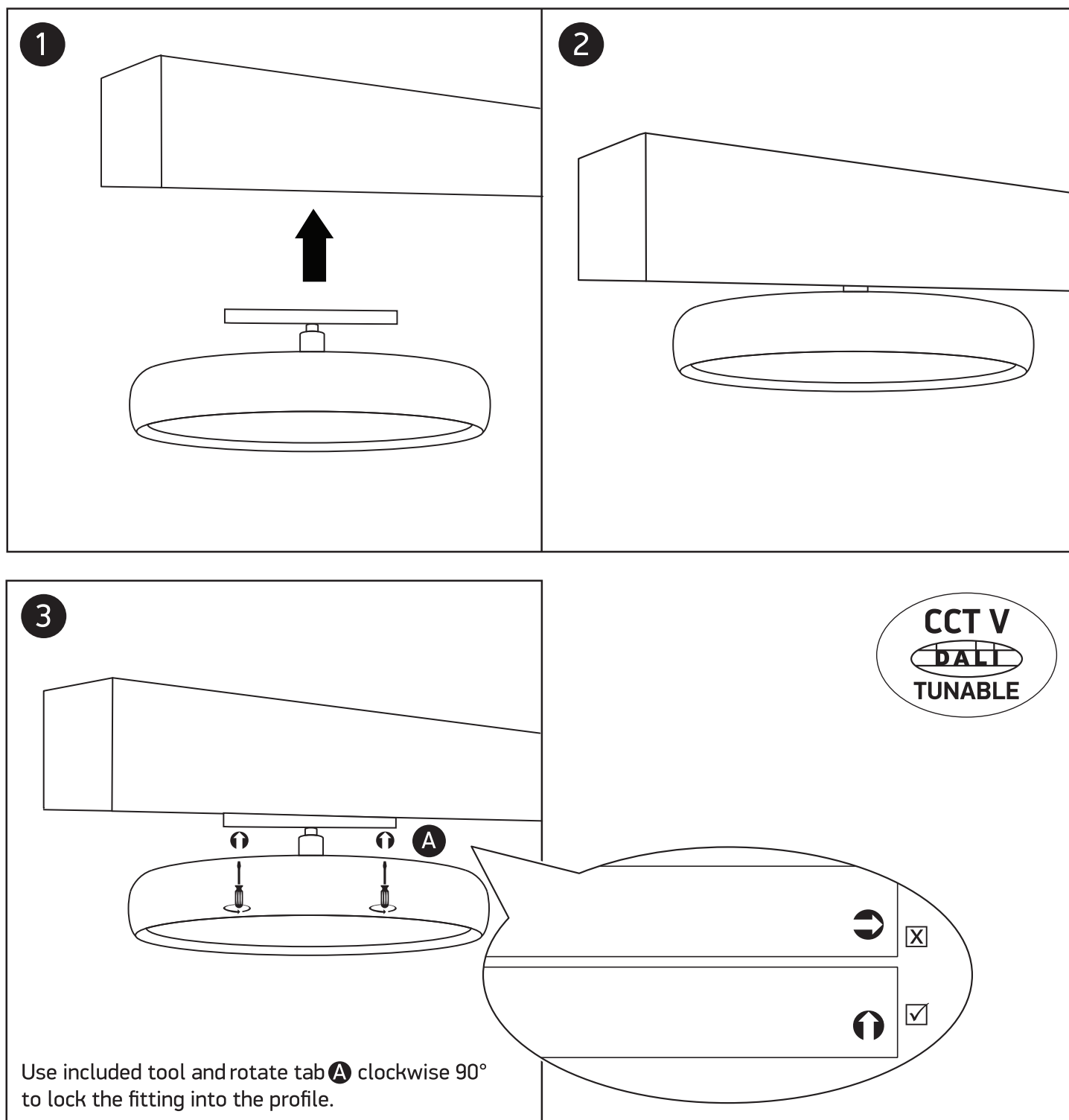
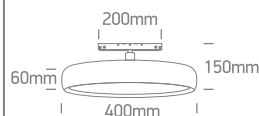
INSTALLATION MANUAL

42146L/./V



30W | LED | DT8 | CCT V | 48V | IP20 | Aluminium

P&P	MINI	MIDI	MAXI
✓	✓	✓	✓



Warnings:

1. Make sure that the product is installed properly before connecting to electricity.
2. Do not cover the fitting.
3. Maintenance and installation should only be carried out by a professional electrician.