

INSTALLATION MANUAL

6310

LED
BUILT IN



DC
MOTOR

35W
MOTOR

6
SPEED



LIGHT
ON/OFF
SWITCH

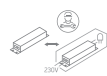
22W
LED

2000
LUMEN

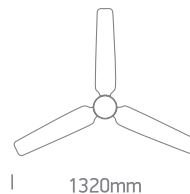
230V | LED 22W | DC MOTOR 35W | IP20 | Metal body | Wood blades | Rod mounted

· Maximum air flow rate 100m³/min
· Service value 2,8/W
· Standby power consumption 0,5W

· Fan sound power level 45dB(A)
· Maximum air velocity 2,6 m/sec.
· Max RPM 175



350mm
(with 150mm Rod)



1320mm

one
LIGHT

1

Install the fan blades and tighten screws.

2

Install LED plate and connect cable.

3

Install ceiling bracket.

4

Remove the R clip from the pin. Then remove the pin from the rod.

5

A Place the parts on the rod.
B Pass wires through rod.

6

A Put the rod into the motor and install the pin and R clip.
B Tighten all the nuts and screws.

7

A Hang the fan onto the ceiling bracket.
B Lock into place.

8

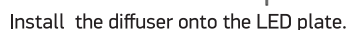
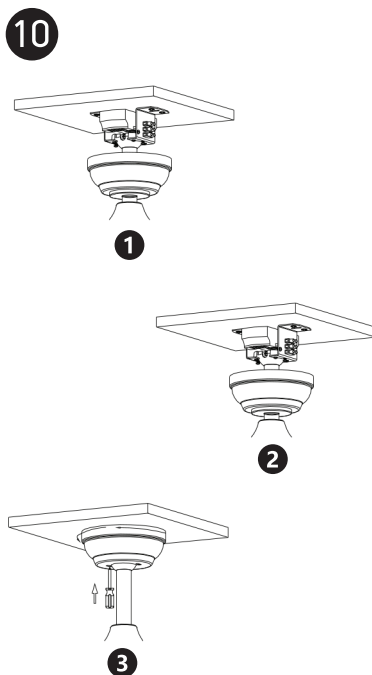
Place the receiver on the hanger bracket.

Warnings:

1. Make sure that the product is installed properly before connecting to electricity.
2. Maintenance and installation should only be carried out by a professional electrician.

www.1-light.eu

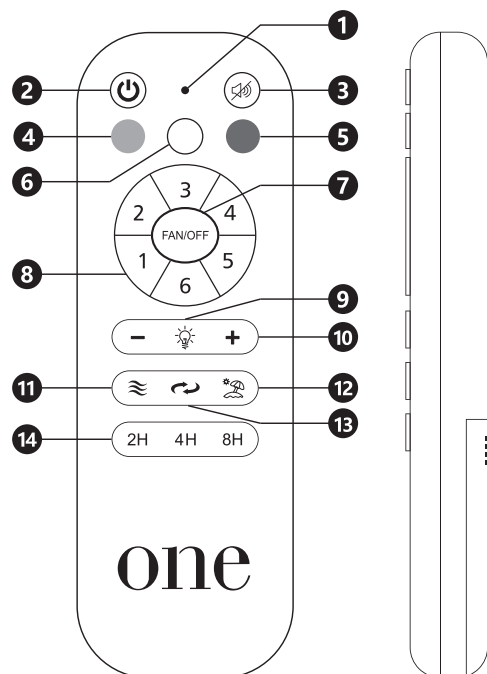
6310



- 1 Hanger bracket
- 2 Receiver
- 3 Rod assembly
- 4 Canopy
- 5 Canopy cover
- 6 Motor
- 7 22W LED
- 8 Remote control + holder
+2 mounting screws
+1.5V (AAA)x2 batteries
- 9 Cover
- 10 Diffuser
- 11 Fan blades (3pcs)
- A Screws for blades
- B Mounting hardware
- C Blade balancing kit

Requires 2xAAA batteries. Remove batteries if not used for long period of time.

- ① LED indicator
- ② ON/OFF
- ③ Mute sound
- ④ Warm white LED
- ⑤ Cool white LED
- ⑥ Daylight LED
- ⑦ Fan OFF
- ⑧ Fan speeds: To turn fan ON 1 (lowest) to 6 (highest)
- ⑨ LED light ON / OFF
- ⑩ LED dimmer
- ⑪ Breeze: Fan speeds automatic cycle between 1 to 6
- ⑫ Vacation mode: Switch on the light kit
5 minutes each 2 hours
- ⑬ Reverse function for winter and summer
- ⑭ Timer: Fan stops after 2h/4h/8h



NOTE: To pair a remote to a receiver turn ON the power supply to the fan and press the ON/OFF and MUTE keys on the remote for 3 to 5 seconds. You will hear a beep.

Warnings:

- www.1-light.eu