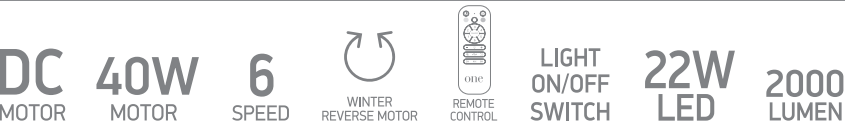


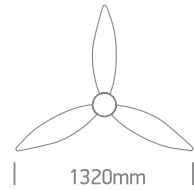
INSTALLATION MANUAL

6314D & 6314L



230V | LED 22W | DC MOTOR 40W | IP20 | Metal body | Wood blades | Rod mounted

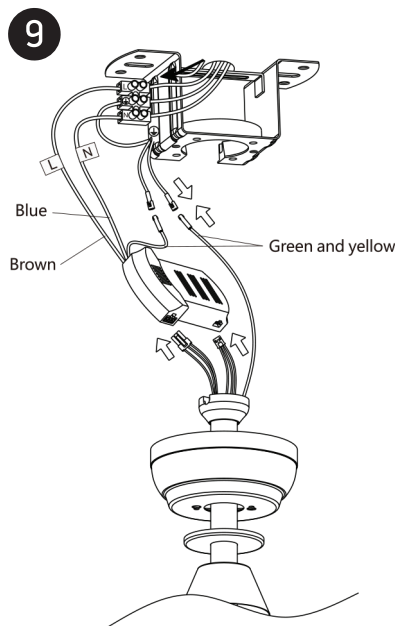
- Maximum air flow rate 85m³/min
- Service value 2,1/W
- Standby power consumption 0,5W
- Fan sound power level 45dB(A)
- Maximum air velocity 2,4 m/sec.
- Max RPM 165



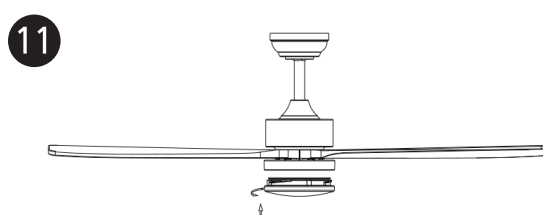
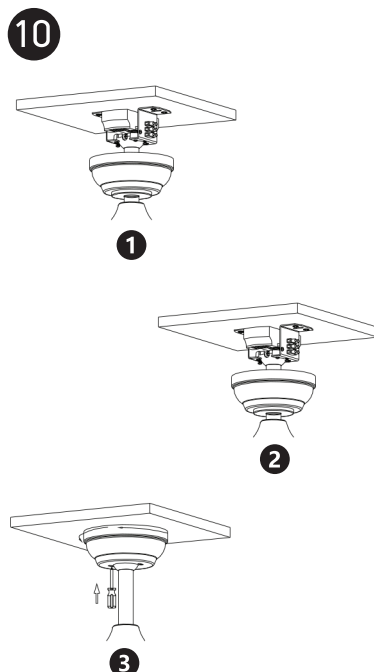
<p>1</p> <p>Install the fan blades and tighten screws.</p>	<p>2</p> <p>Install LED plate and connect cable.</p>	<p>3</p> <p>Install ceiling bracket.</p>
<p>4</p> <p>Remove the R clip from the pin. Then remove the pin from the rod.</p>	<p>5</p> <p>A Place the parts on the rod. B Pass wires through rod.</p>	<p>6</p> <p>A Put the rod into the motor and install the pin and R clip. B Tighten all the nuts and screws.</p>
<p>7</p> <p>A Hang the fan onto the ceiling bracket. B Lock into place.</p>	<p>8</p> <p>Place the receiver on the hanger bracket.</p>	

- Warnings:**
- Make sure that the product is installed properly before connecting to electricity.
 - Maintenance and installation should only be carried out by a professional electrician.

6314D & 6314L

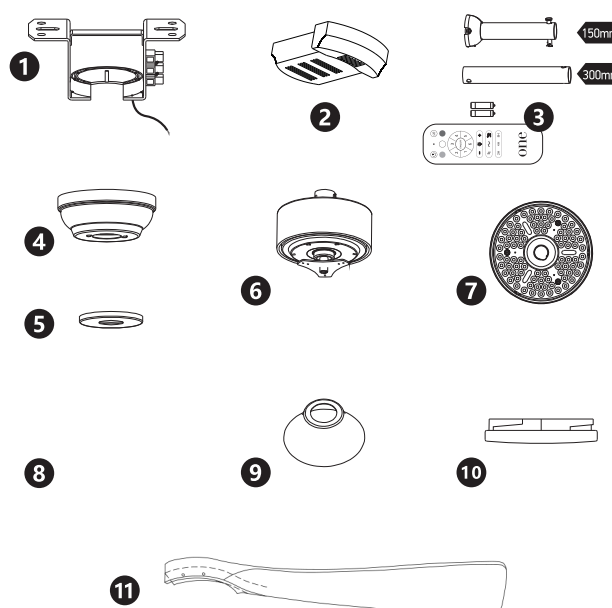


Connect wires.



Install the diffuser onto the LED plate.

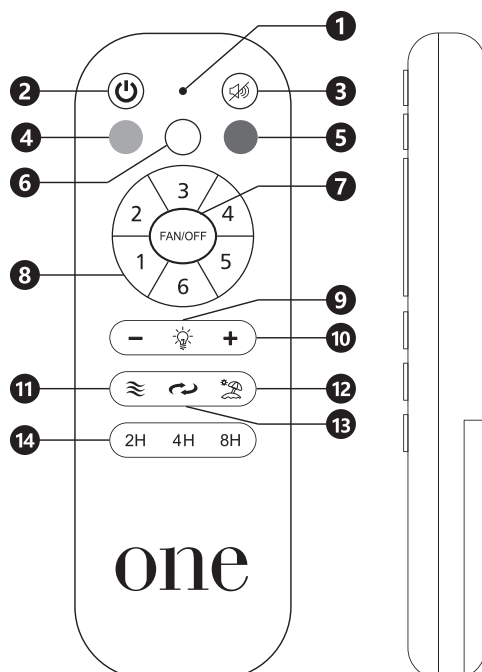
PACKAGE CONTENTS



REMOTE CONTROL

Requires 2xAAA batteries. Remove batteries if not used for long period of time.

- ❶ LED indicator
- ❷ ON/OFF
- ❸ Mute sound
- ❹ Warm white LED
- ❺ Cool white LED
- ❻ Daylight LED
- ❼ Fan OFF
- ❽ Fan speeds: To turn fan ON 1(lowest) to 6 (highest)
- ❾ LED light ON / OFF
- ❿ LED dimmer
- ⓫ Breeze: Fan speeds automatic cycle between 1 to 6
- ⓬ Vacation mode: Switch on the light kit
5 minutes each 2 hours
- ⓭ Reverse function for winter and summer
- ⓮ Timer: Fan stops after 2h/4h/8h



NOTE: To pair a remote to a receiver turn ON the power supply to the fan and press the ON/OFF and MUTE keys on the remote for 3 to 5 seconds. You will hear a beep.

- 1 Hanger bracket
- 2 Receiver
- 3 Rod assembly
- 4 Canopy
- 5 Canopy cover
- 6 Motor
- 7 22W LED
- 8 Remote control + holder
+2 mounting screws
+1.5V (AAA)x2 batteries
- 9 Cover
- 10 Diffuser
- 11 Fan blades (3pcs)
- A Screws for blades
- B Mounting hardware
- C Blade balancing kit

NOTE: When switching mains ON, light automatically turns on.

Warnings:

1. Make sure that the product is installed properly before connecting to electricity.
2. Maintenance and installation should only be carried out by a professional electrician.