

INSTALLATION MANUAL

6314DC/./V



DC
MOTOR

40W
MOTOR

6
SPEED

WINTER
REVERSE MOTOR

REMOTE
CONTROL

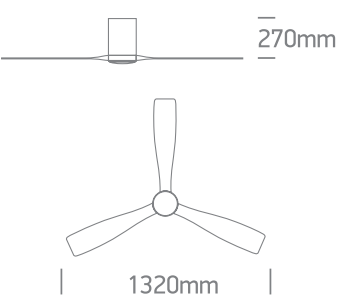
**LIGHT
ON/OFF
SWITCH**

**22W
LED**

**2000
LUMEN**

230V | LED 22W | DC MOTOR 40W | IP20 | Metal body | Wood blades | Ceiling mounted

- Maximum air flow rate 85m3/min
- Service value 2,1/W
- Standby power consumption 0,5W
- Fan sound power level 45dB(A)
- Maximum air velocity 2,4 m/sec.
- Max RPM 165



1

Install the fan blades and tighten screws.

2

Install LED plate and connect cable.

3

Install the diffuser onto the LED plate.

4

Install ceiling bracket.

4a

5

6

Connect wires.

7

8

X4

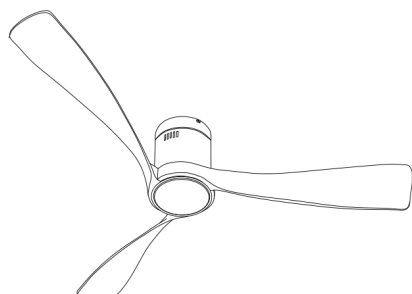
Warnings:

1. Make sure that the product is installed properly before connecting to electricity.
2. Maintenance and installation should only be carried out by a professional electrician.

INSTALLATION MANUAL

6314DC/./V

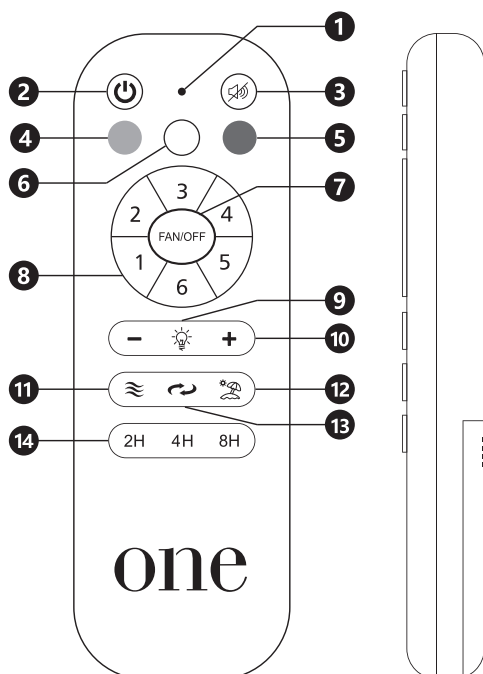
9



REMOTE CONTROL

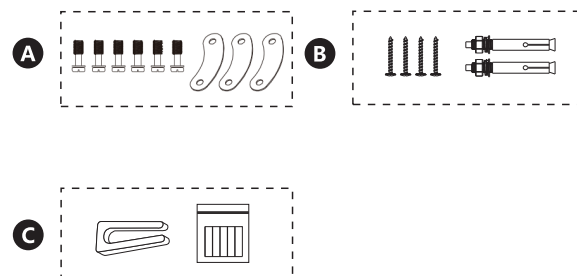
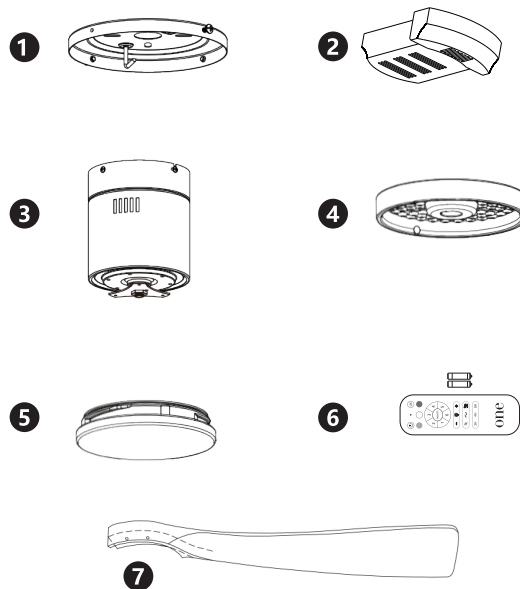
Requires 2xAAA batteries. Remove batteries if not used for long period of time.

- ① LED indicator
- ② ON/OFF
- ③ Mute sound
- ④ Warm white LED
- ⑤ Cool white LED
- ⑥ Daylight LED
- ⑦ Fan OFF
- ⑧ Fan speeds: To turn fan ON 1(lowest) to 6 (highest)
- ⑨ LED light ON / OFF
- ⑩ LED dimmer
- ⑪ Breeze: Fan speeds automatic cycle between 1 to 6
- ⑫ Vacation mode: Switch on the light kit
5 minutes each 2 hours
- ⑬ Reverse function for winter and summer
- ⑭ Timer: Fan stops after 2h/4h/8h



NOTE: To pair a remote to a receiver turn ON the power supply to the fan and press the ON/OFF and MUTE keys on the remote for 3 to 5 seconds. You will hear a beep.

PACKAGE CONTENTS



- ① Mounting bracket
- ② Receiver
- ③ Motor
- ④ 22W LED
- ⑤ Diffuser
- ⑥ Remote control + holder
+2 mounting screws
+1.5V (AAA)x2 batteries
- ⑦ Fan blades (3pcs)
- A Screws for blades
- B Mounting hardware
- C Blade balancing kit

NOTE: When switching mains ON, light automatically turns on.

Warnings:

- 1. Make sure that the product is installed properly before connecting to electricity.
- 2. Maintenance and installation should only be carried out by a professional electrician.

www.1-light.eu