

INSTALLATION MANUAL

67138EL

ecolight

LED
BUILT IN



TRIAC
DIMMABLE

80
CRI

230V | COB LED | 20W | IP65 | Die cast
AC LED.

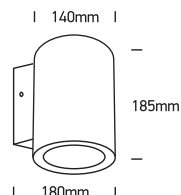


CE

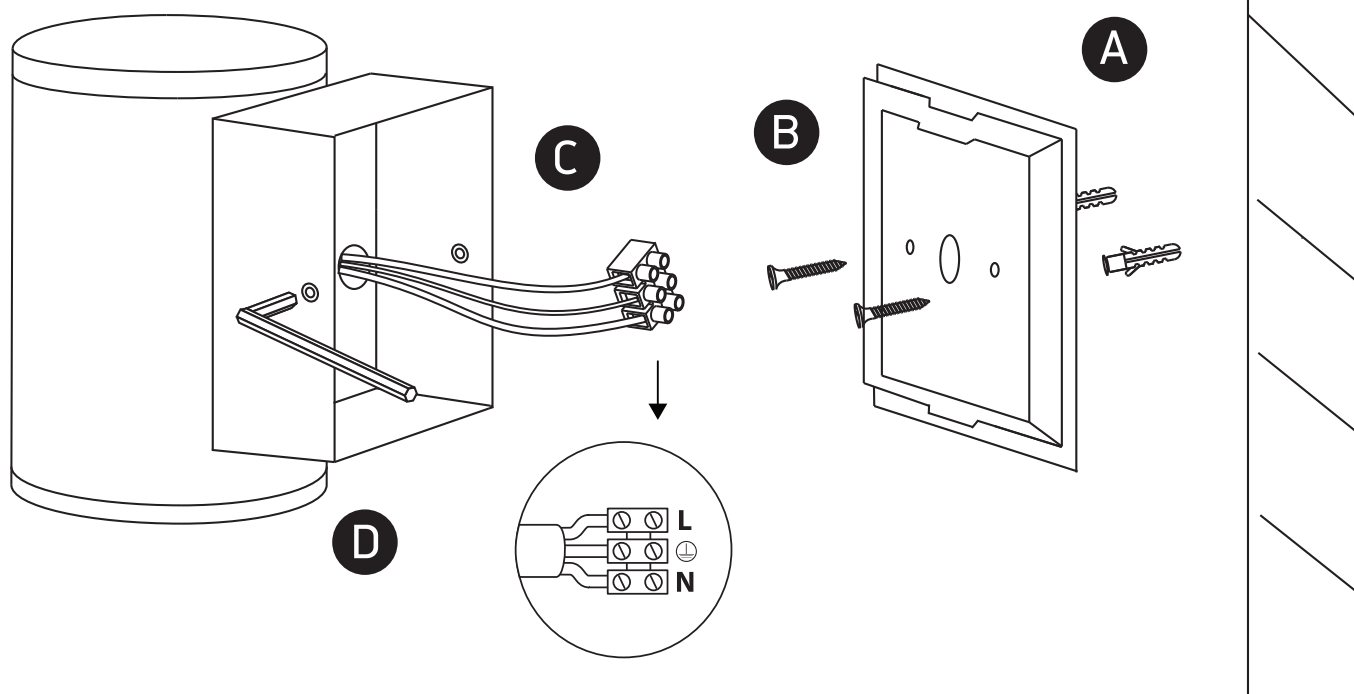
EAC

UK

RoHS
COMPLIANT



one
LIGHT



Warnings:

1. Make sure that the product is installed properly before connecting to electricity.
2. Do not cover the fitting.
3. Maintenance and installation should only be carried out by a professional electrician.