

INSTALLATION MANUAL

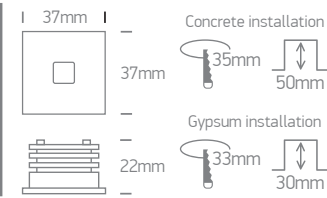
68004A

LED BUILT IN III DIMMABLE DARK LIGHT QUICK FIX

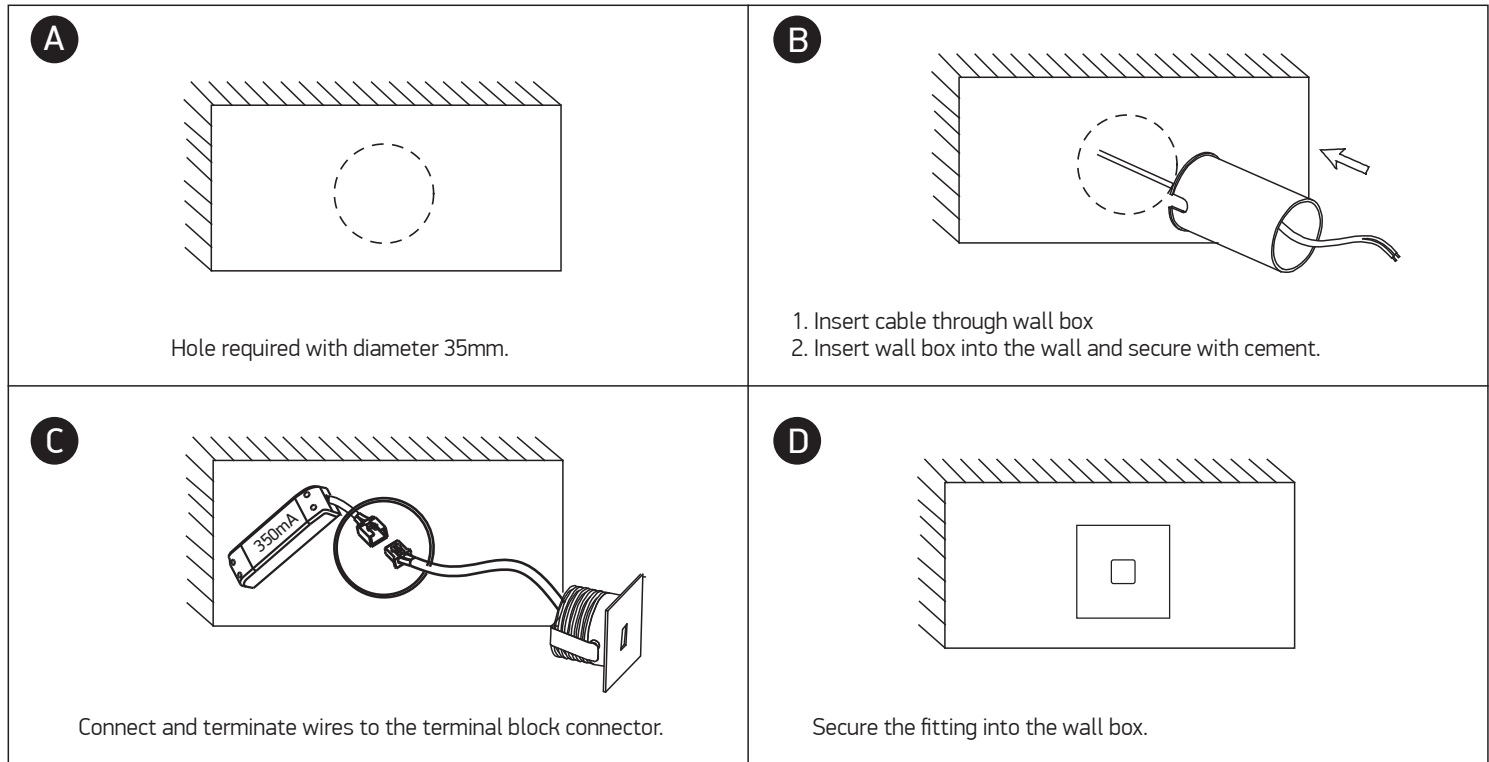
CE ENEC UK CA RoHS

350mA | COB LED | 1W | IP54 | Aluminium | Recessed
Requires 350mA driver / Supplied with box for concrete installation.

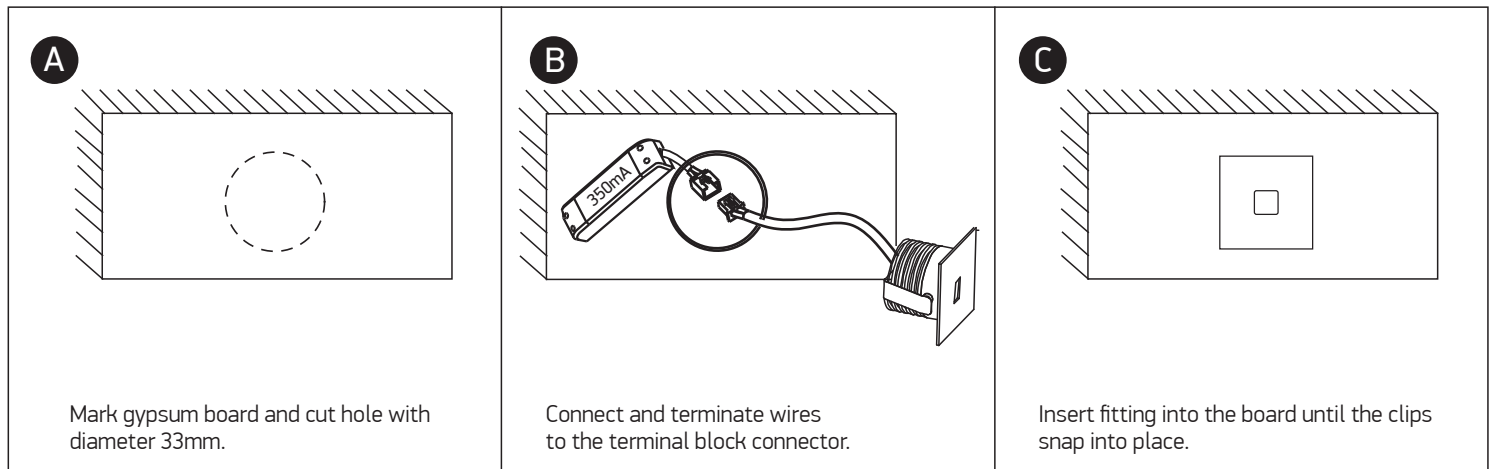
90 CRI 200cm



FOR CONCRETE INSTALLATION



FOR GYPSUM INSTALLATION



Warnings:

1. Make sure that the product is installed properly before connecting to electricity.
2. Do not cover the fitting.
3. Maintenance and installation should only be carried out by a professional electrician.