

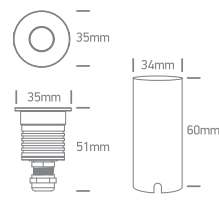
INSTALLATION MANUAL

69068A

LED
BUILT IN



90
CRI



700mA | SMD LED | 2W | IP67

Stainless steel 316 + Aluminium body

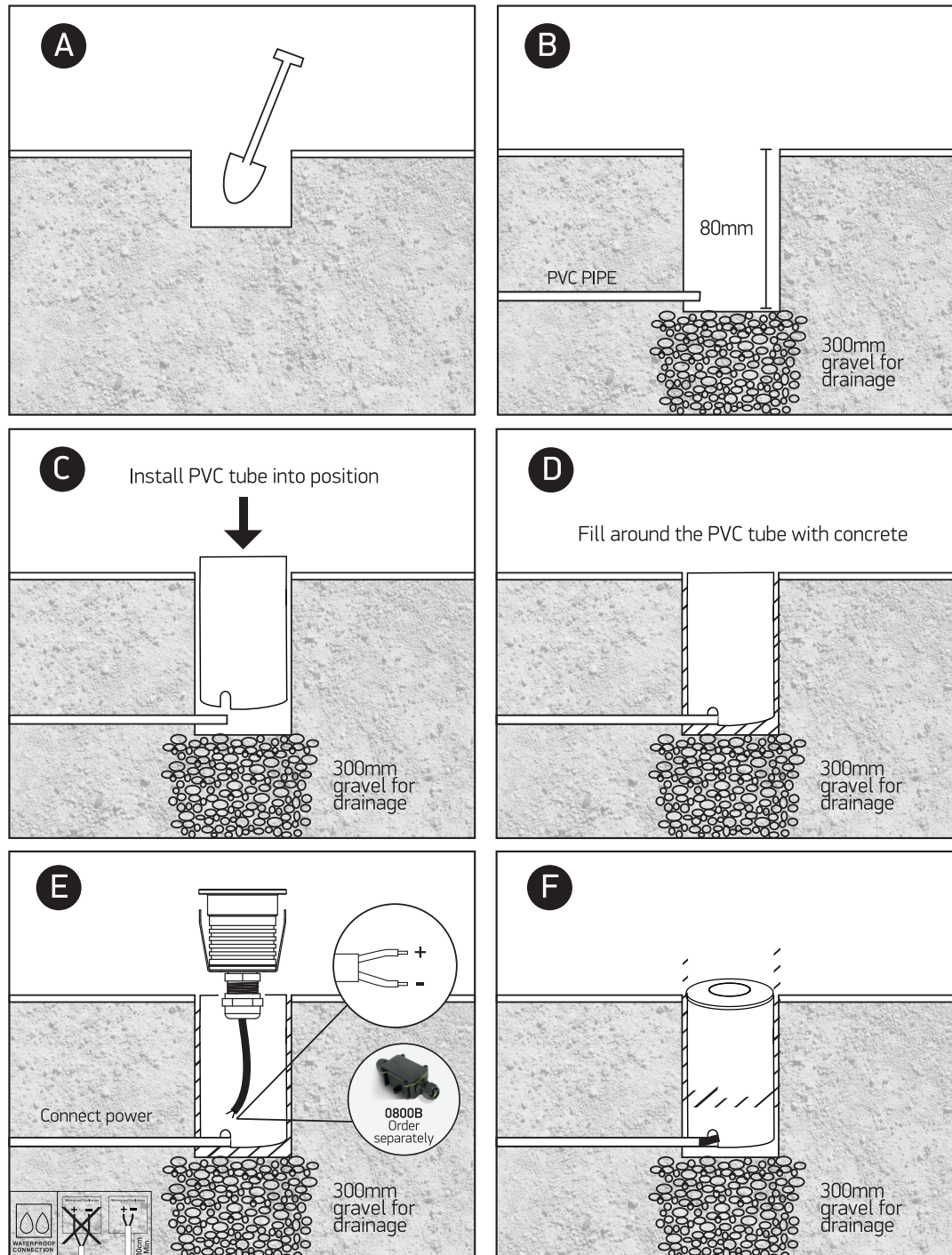
Requires 700mA driver. / Supplied with box for concrete installation.

Concrete Installation



one
LIGHT

CONCRETE INSTALLATION



Warnings:

1. Make sure that the product is installed properly before connecting to electricity.
2. Do not cover the fitting.
3. Maintenance and installation should only be carried out by a professional electrician.