

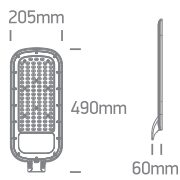
INSTALLATION MANUAL

70118D



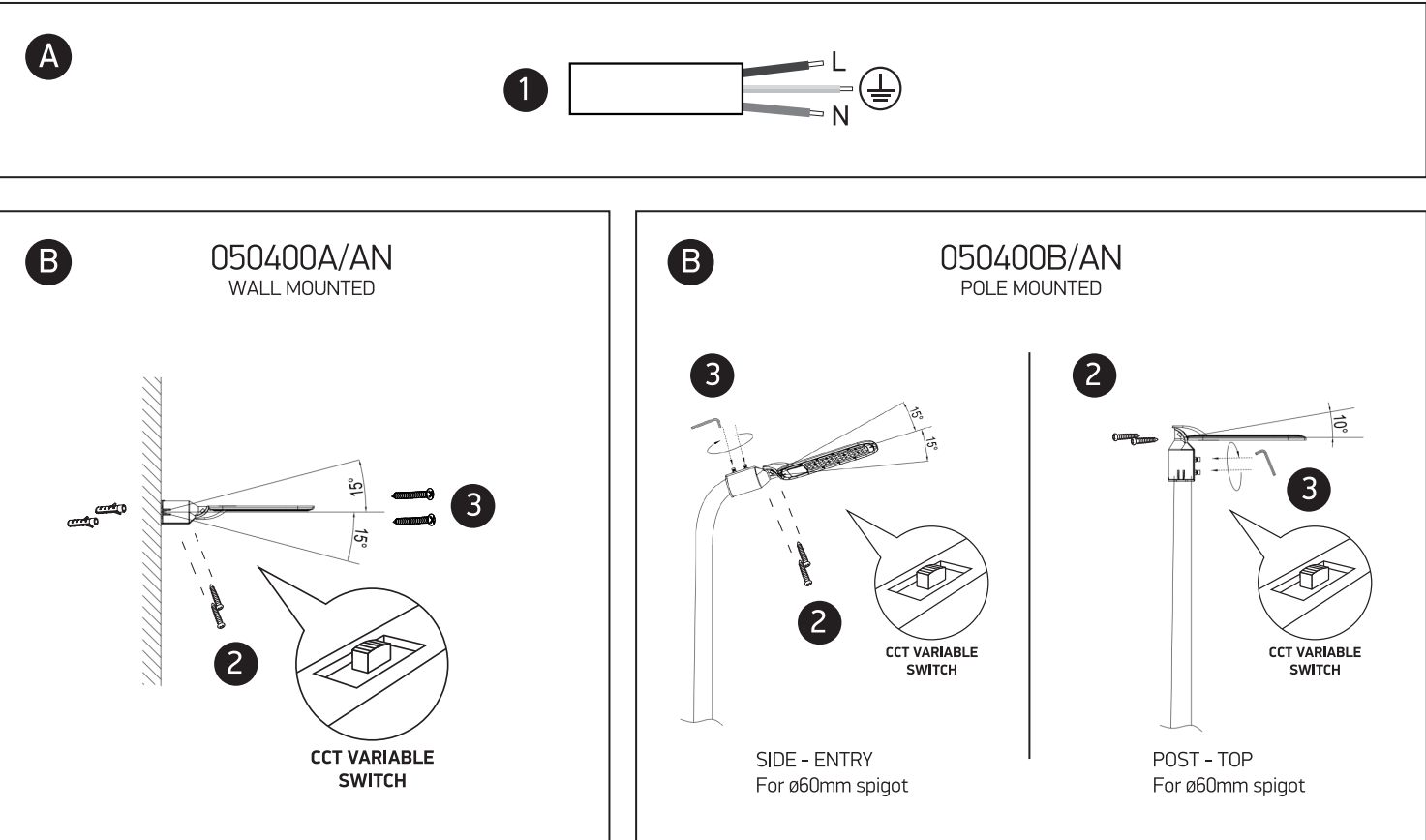
230V | SMD | DOB | CCT V | 200W | IP65 | Aluminium + PC

80 CRI | 100cm



one
LIGHT

Mounting bracket must be ordered separately:
Wall mounting bracket - order code 050400A/AN.
Pole mounting bracket - order code 050400B/AN.



Warnings:

1. Make sure that the product is installed properly before connecting to electricity.
2. Do not cover the fitting.
3. Maintenance and installation should only be carried out by a professional electrician.