

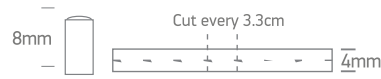
INSTALLATION MANUAL

7841A



24V DC | SMD 2835 | 180LEDs/m | 10W/m | IP66 | Silicone

Requires 24V DC driver.
Supplied in 5m roll.
Avoid direct sunlight.



A. CUT:

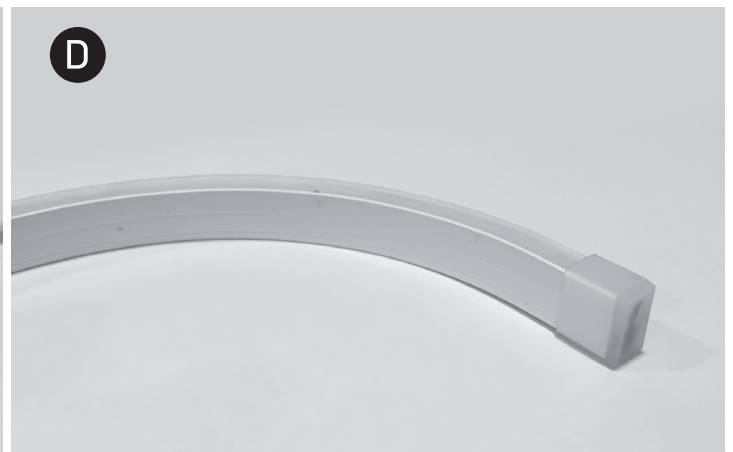
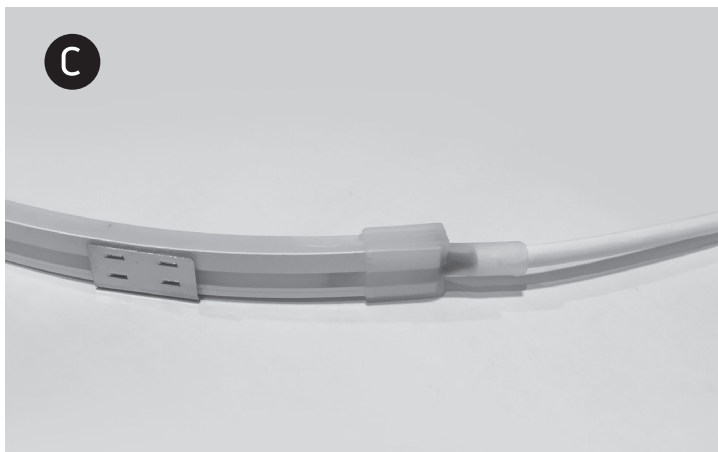
The LED strip can be cut every 3,3cm at the clearly marked positions. Cut carefully at the desired length by using a sharp pair of scissors.

B. CONNECT:

Connect the power supply cable to 24V DC driver.

C/D. INSTALLATION:

Use the fixing clips 7841AF and end cups to install the LED strip.



Warnings:

1. The mounting surface must be clean, dry and free from dust or grease.
2. Make sure that the product is installed properly before connecting to electricity.
3. Do not fold or twist the LED strip. Minimum bending radius 30mm.
4. Do not bend to install in corners.
5. Do not put excessive pressure on surface of LED strip.
6. Do not cover LED strip with any materials.
7. Do not install in ambient temperatures below -10°C or exceeding 45°C .
8. Always handle the LED strip with care.
9. The LED strip should not be exposed to direct sunlight.
10. LED strips with different batch numbers may have slight variations in colour consistency ($\text{CCT} \pm 150\text{K}$).
11. Maintenance and installation should only be carried out by a professional electrician.