

# INSTALLATION MANUAL

7841

**LEDflex lightline**

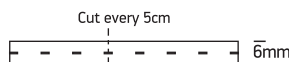


90  
CRI



24V DC | SMD 2835 | 140LEDs/m | 14,4W/m | IP66 | Silicone

Requires 24V DC driver.  
Supplied in 5m roll.



## A. CUT:

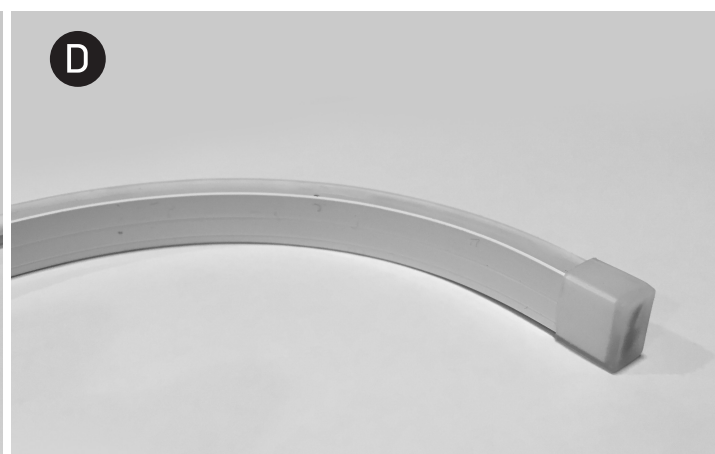
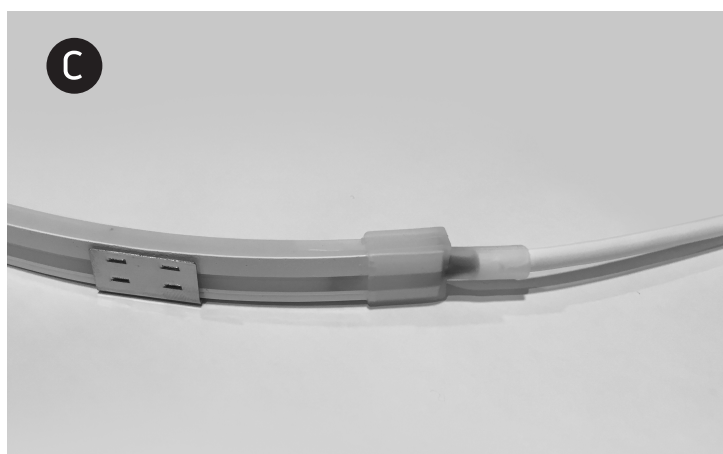
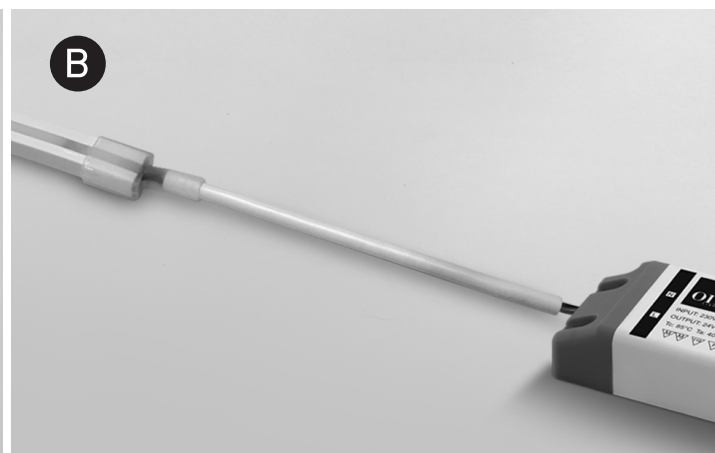
The LED strip can be cut every 5cm at the clearly marked positions. Cut carefully at the desired length by using a sharp pair of scissors.

## B. CONNECT:

Connect the power supply cable to 24V DC driver.

## C/D. INSTALLATION:

Use the fixing clips 7841F and end cups to install the LED strip.



## Warnings:

1. The mounting surface must be clean, dry and free from dust or grease.
2. Make sure that the product is installed properly before connecting to electricity.
3. Do not bend, fold or twist the LED strip.
4. Do not bend to install in corners.
5. Do not put excessive pressure on surface of LED strip.
6. Do not cover LED strip with any materials.
7. Do not install in ambient temperatures below  $-10^{\circ}\text{C}$  or exceeding  $45^{\circ}\text{C}$ .
8. Always handle the LED strip with care.
9. The LED strip should not be exposed to direct sunlight.
10. LED strips with different batch numbers may have slight variations in colour consistency ( $\text{CCT} \pm 150\text{K}$ ).
11. Maintenance and installation should only be carried out by a professional electrician.