



Tracks & Magnetic

Pages 315-342

10



Square Track Surface



40003A/B

40001A/W

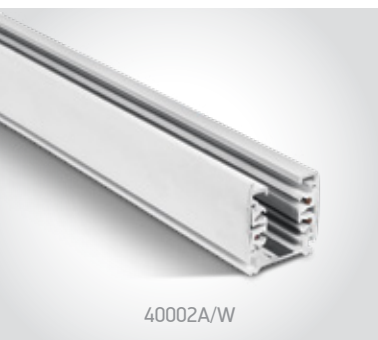
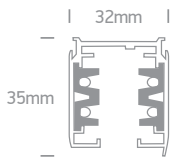


40001A/W

40001A | 16A | 1m Square track | 3-phase | Aluminium



40001A/B

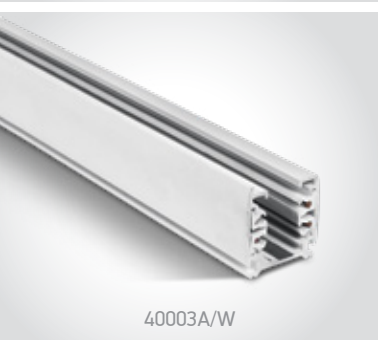
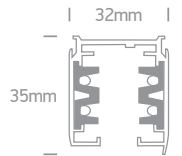


40002A/W

40002A | 16A | 2m Square track | 3-phase | Aluminium



40002A/B



40003A/W

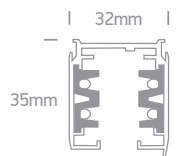
40003A | 16A | 3m Square track | 3-phase | Aluminium



40003A/B

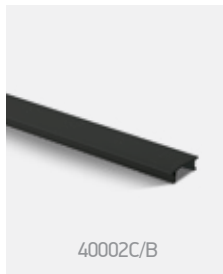


40003A/G



40002C/W

40002C | 2m Plastic cover for square tracks



40002C/B



40002A/B + 40002C/B



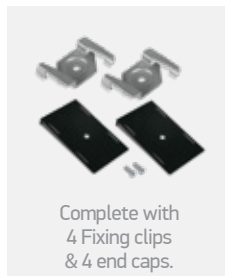
Order Code	Colour	Input	Ampere	Class		Notes
40001A/W	White	100-240V	16A		10	-
40001A/B	Black	100-240V	16A		10	-
40002A/W	White	100-240V	16A		10	-
40002A/B	Black	100-240V	16A		10	-
40003A/W	White	100-240V	16A		10	-
40003A/B	Black	100-240V	16A		10	-
40003A/G	Grey	100-240V	16A		10	-

Square Track Accessories



40020/B | 2m Profile for square tracks 40001A, 40002A & 40003A | Aluminium

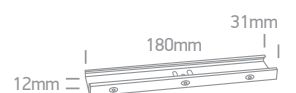
Track must be ordered separately.



41026R/W | Adjustable wire 2m for square track | Metal



41032 | Connector for suspending square track



Square Track Accessories

41020 | Heavy items mechanical adaptor for square track | Die cast



41020/W



41020/G



41004A | 16A | Live end for square track | Plastic



41004A/W/..



41004A/B/..



41004A/G/..



41010A | 16A | Live connector for square track | Plastic



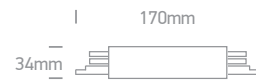
41010A/W



41010A/B



41010A/G



41008A | 16A | Connector for square track | Plastic



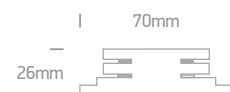
41008A/W



41008A/B



41008A/G



Order Code	Colour	Direction	Input	Ampere	Class		Notes
41004A/W/L	White	Left	100-240V	16A		50	-
41004A/W/R	White	Right	100-240V	16A		50	-
41004A/B/L	Black	Left	100-240V	16A		50	-
41004A/B/R	Black	Right	100-240V	16A		50	-
41004A/G/L	Grey	Left	100-240V	16A		50	-
41004A/G/R	Grey	Right	100-240V	16A		50	-
41010A/W	White	-	100-240V	16A		50	-
41010A/B	Black	-	100-240V	16A		50	-
41010A/G	Grey	-	100-240V	16A		50	-
41008A/W	White	-	100-240V	16A		100	-
41008A/B	Black	-	100-240V	16A		100	-
41008A/G	Grey	-	100-240V	16A		100	-



41012A/W/..

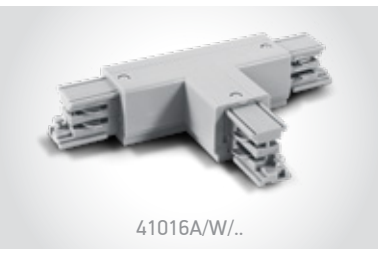
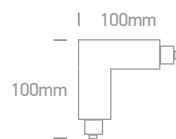
41012A | 16A | Corner for square track | Plastic



41012A/B/..



41012A/G/..



41016A/W/..

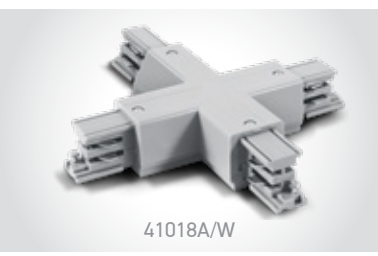
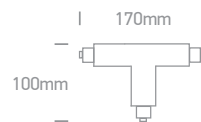
41016A | 16A | T connector for square track | Plastic



41016A/B/..



41016A/G/..

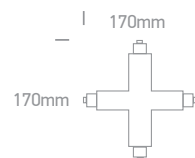


41018A/W

41018A | 16A | X Connector for square track | Plastic



41018A/B



41024A/W

41024A | 16A | Flexible connector for square track | Plastic



41024A/B



41024A/G



41022A/W

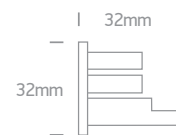
41022A | End cap for square track | Plastic



41022A/B

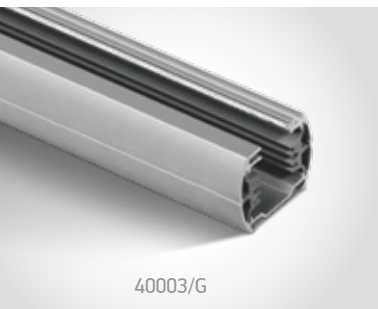


41022A/G



Order Code	Colour	Direction	Input	Ampere	Class		Notes
41012A/W/L	White	Left	100-240V	16A		25	-
41012A/W/R	White	Right	100-240V	16A		25	-
41012A/B/L	Black	Left	100-240V	16A		25	-
41012A/B/R	Black	Right	100-240V	16A		25	-
41012A/G/L	Grey	Left	100-240V	16A		25	-
41012A/G/R	Grey	Right	100-240V	16A		25	-
41016A/W/L	White	Left	100-240V	16A		25	-
41016A/W/R	White	Right	100-240V	16A		25	-
41016A/B/L	Black	Left	100-240V	16A		25	-
41016A/B/R	Black	Right	100-240V	16A		25	-
41016A/G/R	Grey	Right	100-240V	16A		25	-
41018A/W	White	-	100-240V	16A		10	-
41018A/B	Black	-	100-240V	16A		10	-
41024A/W	White	-	100-240V	16A		10	-
41024A/B	Black	-	100-240V	16A		10	-
41024A/G	Grey	-	100-240V	16A		10	-

Rounded Track & Accessories



40003/G

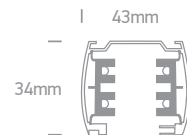
40003 | 16A | 3m track | 3-phase | Aluminium



offer



40003/W



41020/G

41020 | Heavy items mechanical adaptor for rounded track | Die cast



41020/W



41004/G/L

41004 | 16A | Live end for rounded track | Plastic



offer



41004/W/L



41010/G

41010 | 16A | Live connector for rounded track | Plastic



offer



41010/W



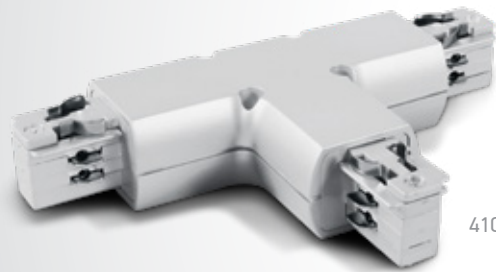
41008 | 16A | Connector for rounded track | Plastic



offer



Order Code	Colour	Direction	Input	Ampere	Class		Notes
40003/W	White	-	100-240V	16A		10	-
40003/G	Grey	-	100-240V	16A		10	-
41004/W/L	White	Left	100-240V	16A		50	-
41004/G/L	Grey	Left	100-240V	16A		50	-
41010/W	White	-	100-240V	16A		40	-
41010/G	Grey	-	100-240V	16A		40	-
41008/W	White	-	100-240V	16A		50	-



41016/W

Rounded Track Accessories

41012 | 16A | Corner for rounded track | Plastic



41012/G/..

offer



offer

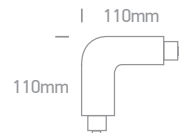


41012/W/..

offer



41012/B/..



41016 | 16A | T connector for rounded track | Plastic



41016/G

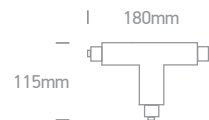
offer



offer



41016/W



41018 | 16A | X connector for rounded track | Plastic



41018/G

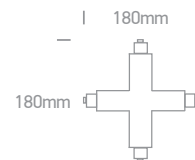
offer



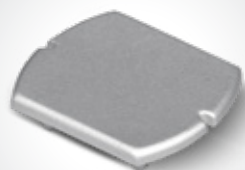
offer



41018/W



41022 | End cover for rounded track | Plastic



41022/G

offer



offer



41022/W



Order Code	Colour	Direction	Input	Ampere	Class		Notes
41012/W/L	White	Left	100-240V	16A		20	-
41012/W/R	White	Right	100-240V	16A		20	-
41012/B/L	Black	Left	100-240V	16A		20	-
41012/B/R	Black	Right	100-240V	16A		20	-
41012/G/L	Grey	Left	100-240V	16A		20	-
41012/G/R	Grey	Right	100-240V	16A		20	-
41016/W	White	-	100-240V	16A		10	-
41016/G	Grey	-	100-240V	16A		10	-
41018/W	White	-	100-240V	16A		10	-
41018/G	Grey	-	100-240V	16A		10	-



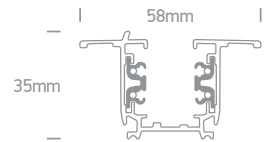
40003R/W

Square Track Recessed



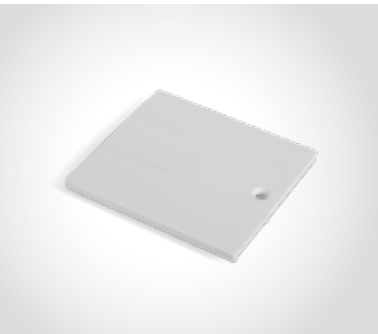
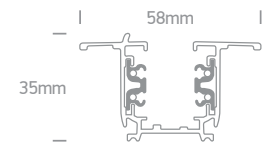
40003R | 16A | 3m Recessed track | 3-phase | Aluminium

Use accessories on pages 317 & 318.

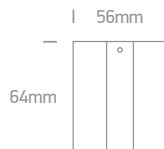


40003R | 16A | 3m Recessed track | 3-phase | Aluminium

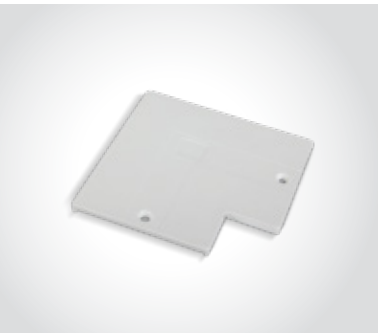
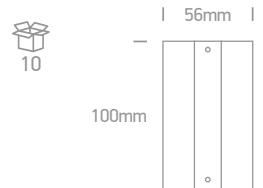
Use accessories on pages 317 & 318.



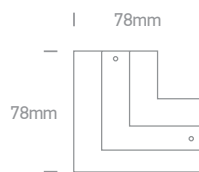
41004B/W | Cover for 41004A



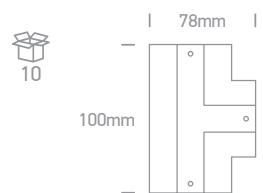
41008B/W | Cover for 41010A



41012B/W | Cover for corner 41012A



41016B/W | Cover for T connector 41016A



Order Code	Colour	Input	Ampere	Class				Notes
40003R/W	White	100-240V	16A		40x3000mm	35mm	6	-
40003R/B	Black	100-240V	16A		40x3000mm	35mm	6	-



41002/G



41002A/W

Track Adaptors & Accessories



41002/W

41002 | 16A | Track adaptor | Plastic



offer



41002/G



41002A/W

41002A | 6A | Track adaptor | Plastic



41002A/B



41030/W

41030 | 6A | Surface mount base for track lights | Plastic



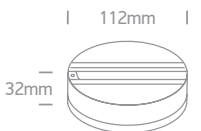
IP20



41030/B



41030/G



Order Code	Colour	Input	Ampere	Class		Notes
41002/W	White	100-240V	16A		150	-
41002/G	Grey	100-240V	16A		150	-
41002A/W	White	100-240V	6A		50	-
41002A/B	Black	100-240V	6A		50	-
41030/W	White	100-240V	6A		40	-
41030/B	Black	100-240V	6A		40	-
41030/G	Grey	100-240V	6A		40	-



Magnetic Surface Profiles MINI



42001A | 42002A | 48V | Magnetic profile | ON/OFF / DALI | Aluminium

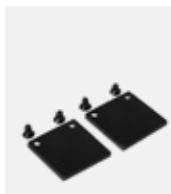
Max 10m/driver | Max 400W/circuit.



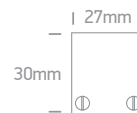
new



Optional suspension kit.
Order code 42026A.



Complete with
2pcs end caps.



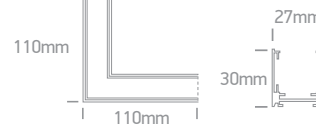
42012AA/B | Corner for 42001A & 42002A | Aluminium



new



Complete with
2pcs mechanical
connectors.



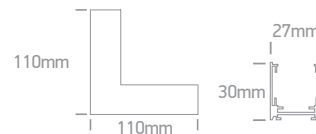
42012BA/B | Corner wall to wall (IN) for 42001A & 42002A | Aluminium



new



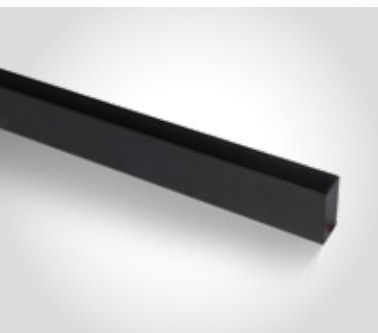
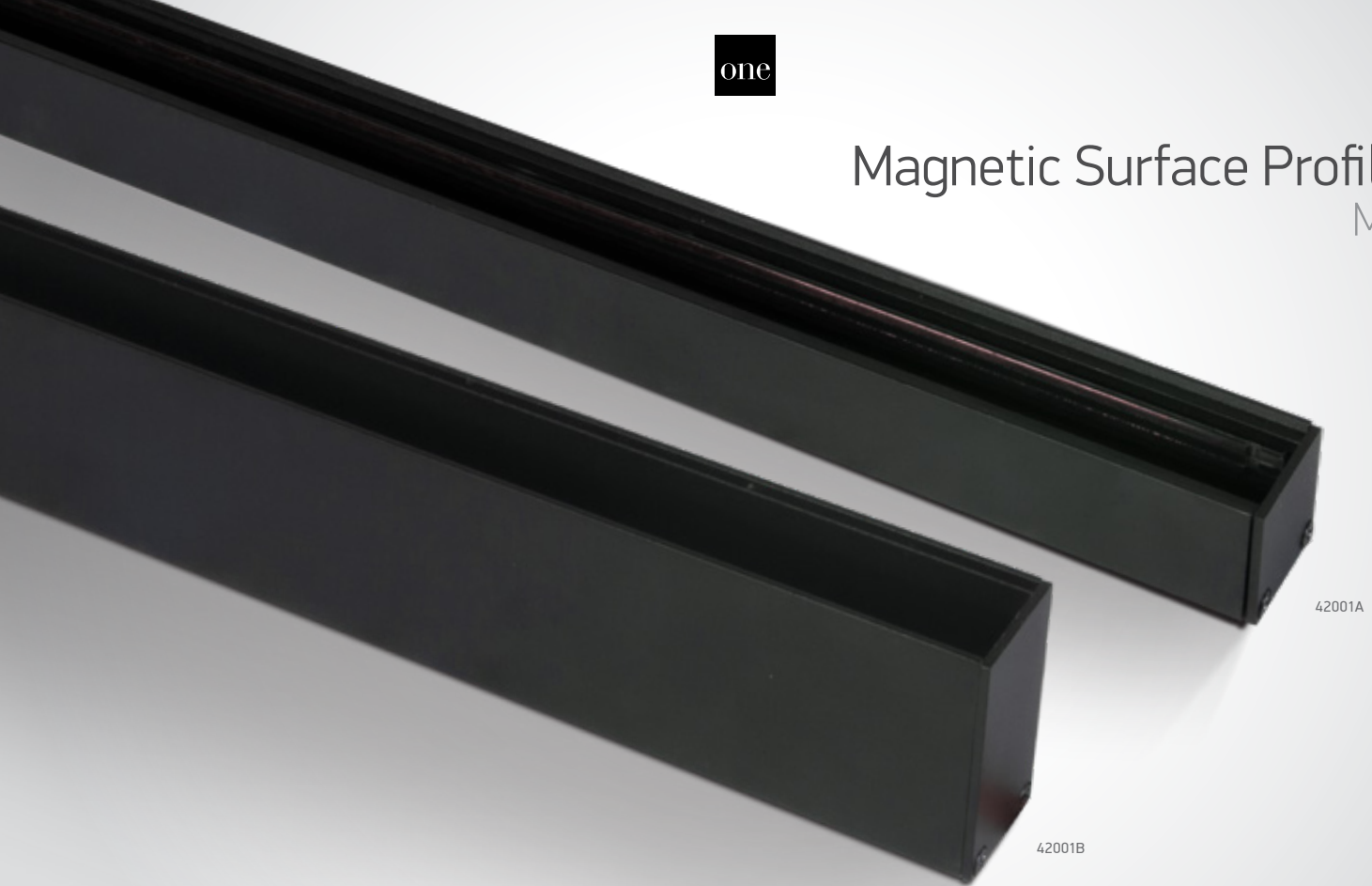
Complete with
2pcs mechanical
connectors.



Order Code	Colour	Length	Input	Class		Notes
42001A/B	Black	1m	48V		1	-
42002A/B	Black	2m	48V		1	-

Magnetic Surface Profiles

MIDI

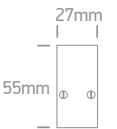


42001B | 42002B | 48V | Magnetic profile | ON/OFF / DALI | Aluminium

Max 10m/driver | Max 400W/circuit.



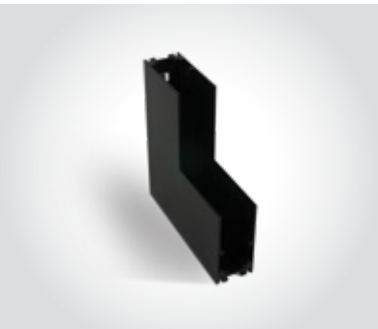
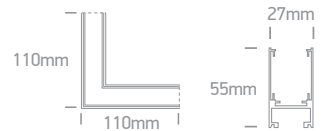
new



42012AB/B | Corner for 42001B & 42002B | Aluminium



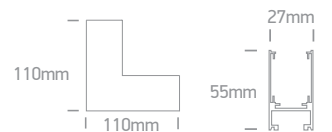
new



42012BB/B | Corner wall to wall (IN) for 42001B & 42002B | Aluminium



new



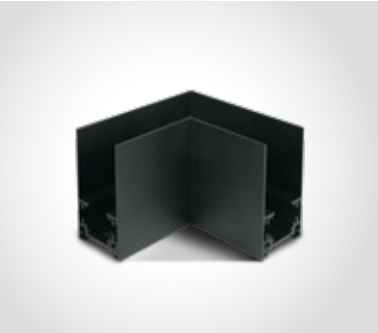
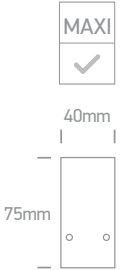
Order Code	Colour	Length	Input	Class		Notes
42001B/B	Black	1m	48V		1	-
42002B/B	Black	2m	48V		1	-

Magnetic Surface Profiles MAXI

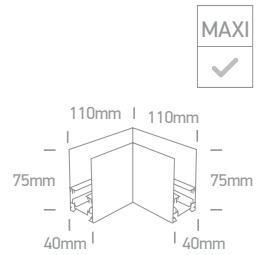


42001 | 42002 | 42003 | 48V | Magnetic profile | ON/OFF / DALI | Aluminium

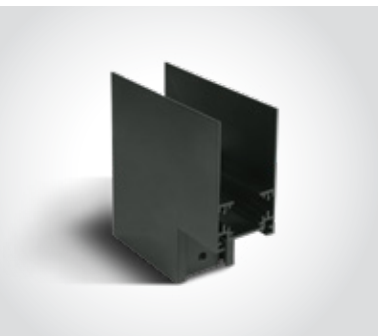
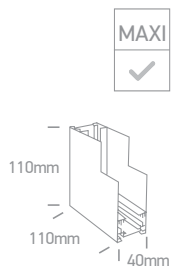
Max 10m/driver | Max 400W/circuit



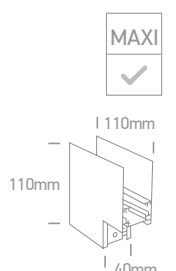
42012A/B | Corner for 42001, 42002 & 42003 | Aluminium



42012B/B | Corner wall to wall (IN) for 42001, 42002 & 42003 | Aluminium

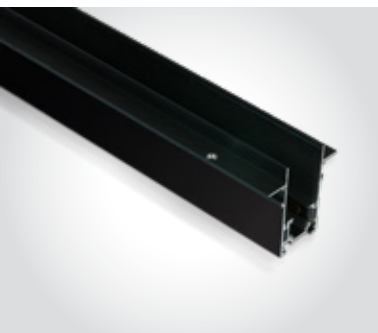


42012C/B | Corner wall to wall (OUT) for 42001, 42002 & 42003 | Aluminium



Order Code	Colour	Length	Input	Class		Notes
42001/B	Black	1m	48V	III	1	-
42002/B	Black	2m	48V	III	1	-
42003/B	Black	3m	48V	III	1	-

Magnetic Trimless Profiles MAXI



42001TR | 42002TR | 48V | Trimless recessed | ON/OFF / DALI | Aluminium

Max 10m/driver | Max 400W/circuit.



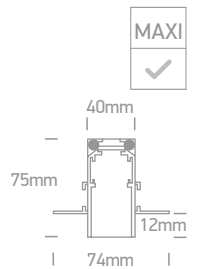
Complete with 2 pcs mechanical connectors & 4 pcs side connectors.



Complete with 2 pcs end caps.

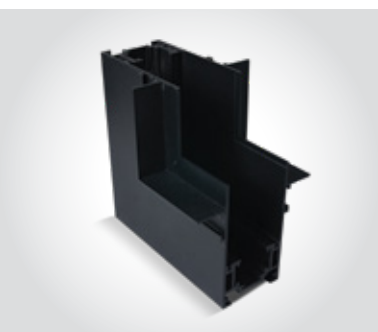
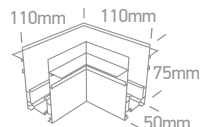
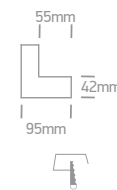


Complete with cover.



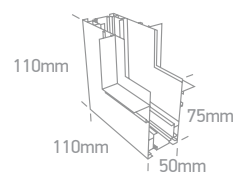
42012ATR/B | Trimless recessed corner for 42001TR & 42002TR | Aluminium

Can not pass through cutout hole.



42012BTR/B | Trimless recessed corner wall to wall (IN) for 42001TR & 42002TR | Aluminium

Can not pass through cutout hole.



Order Code	Colour	Length	Input	Class				Notes
42001TR/B	Black	1m	48V		42x1000mm	120mm	1	-
42002TR/B	Black	2m	48V		42x2000mm	120mm	1	-

Magnetic Recessed Profiles MIDI



42001RB | 42002RB | 48V | Recessed magnetic profile | ON/OFF / DALI | Aluminium | Max 10m/driver | Max 400W/circuit.



new



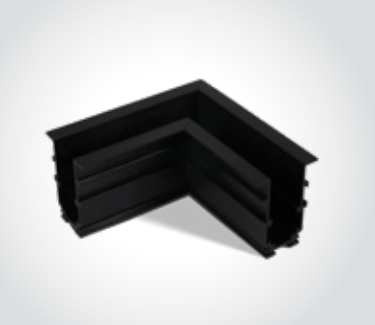
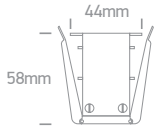
Complete with 4pcs fixing clips, 1pc mechanical & 2pcs side connectors.



Complete with 2pcs end caps.



Complete with cover.



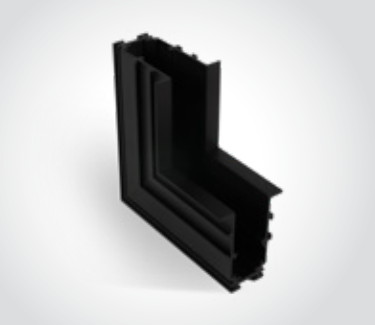
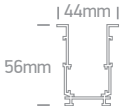
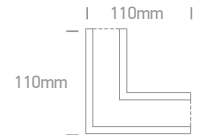
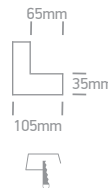
42012ARB/B | Recessed corner for 42001RB & 42002RB | Aluminium



new



Complete with 2pcs mechanical connectors & 4pcs side connectors.



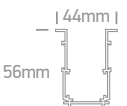
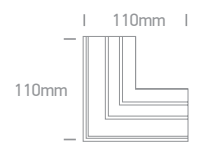
42012BRB/B | Recessed corner wall to wall (IN) for 42001RB & 42002RB | Aluminium



new



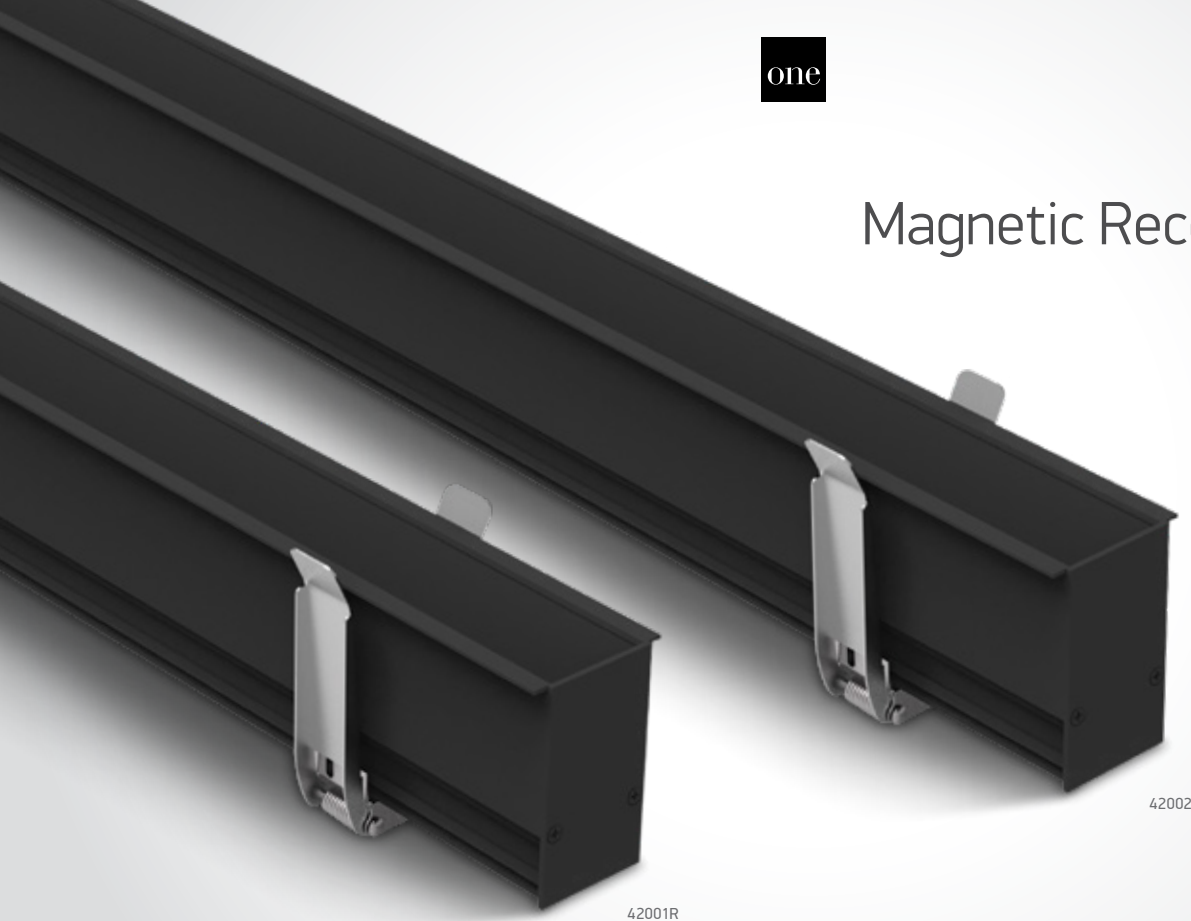
Complete with 2pcs mechanical connectors & 4pcs side connectors.



Order Code	Colour	Length	Input	Class				Notes
42001RB/B	Black	1m	48V		35x1000mm	100mm	1	-
42002RB/B	Black	2m	48V		35x2000mm	100mm	1	-

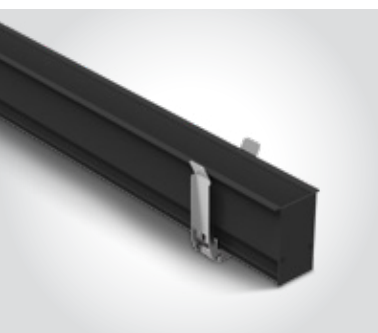
Magnetic Recessed Profiles

MAXI



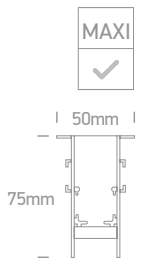
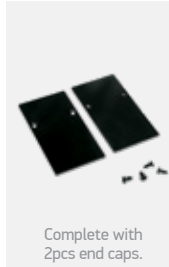
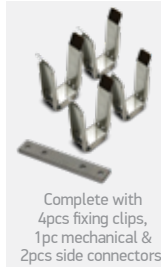
42001R

42002R

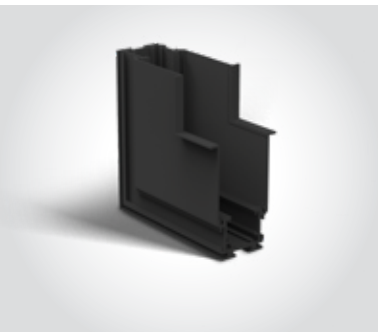
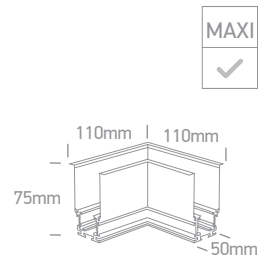
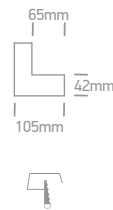
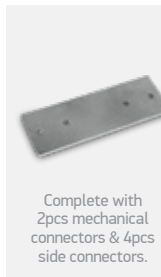


42001R | 42002R | 48V | Recessed magnetic profile | ON/OFF / DALI | Aluminium

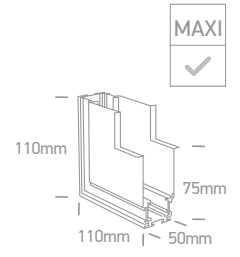
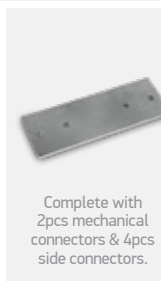
Max 10m/driver | Max 400W/circuit.



42012AR/B | Recessed corner for 42001R & 42002R | Aluminium



42012BR/B | Recessed corner wall to wall (IN) for 42001R & 42002R | Aluminium



Order Code	Colour	Length	Input	Class				Notes
42001R/B	Black	1m	48V		42x1000mm	120mm	1	-
42002R/B	Black	2m	48V		42x2000mm	120mm	1	-

Magnetic Profiles Accessories



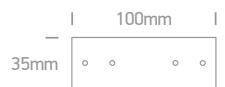
42032A | Mechanical connector for 42001A, 42002A, 42001B, 42002B, 42001RB & 42002RB



new



42032 | Mechanical connector for 42001, 42002 & 42003



42022A/B | End caps for 42001A & 42002A



new



42022B/B | End caps for 42001B, 42002B, 42001RB & 42002RB



new



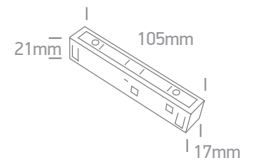
42022/B | End caps for 42001, 42002, 42003, 42001R & 42002R



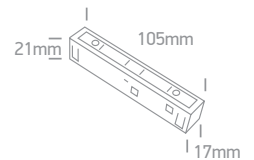
Magnetic Profiles Accessories



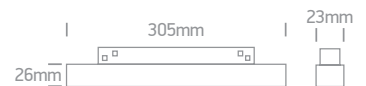
42004A/B | 48V | Power supply cable | ON/OFF / DALI | Plastic



42004C/B | 48V | Live connector/corner | ON/OFF / DALI | Plastic

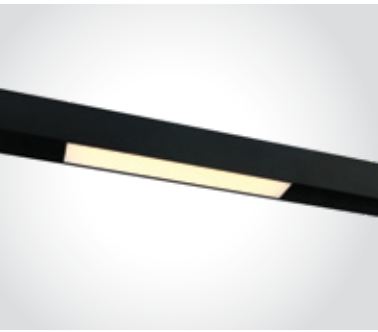


42006BX | 200W | 48V DC | Driver for magnetic profiles



Order Code	Input	Power	Output	Class	Dimmable		Notes
42006BX	230V	200W	48V DC		NO	20	-

Magnetic Linear Lights

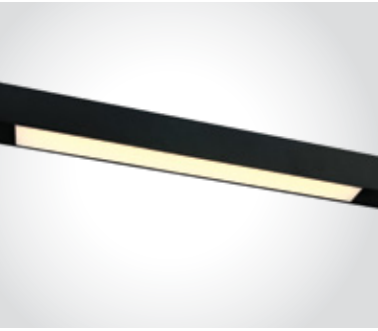
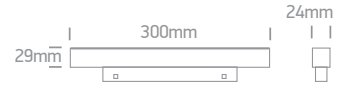


42100AA | 8W | SMD 2835 | Linear light | Aluminium + PC



new

IP20

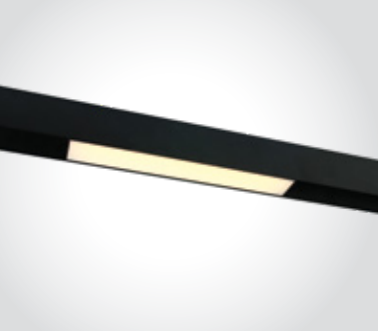


42100BA | 16W | SMD 2835 | Linear light | Aluminium + PC



new

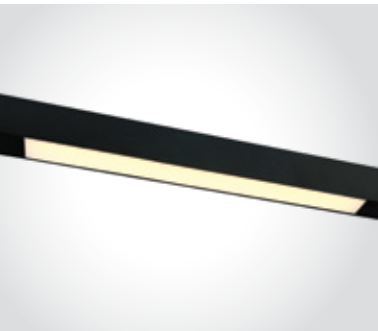
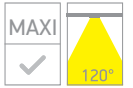
IP20



42100A | 15W | SMD 2835 | Linear light | Aluminium + PC



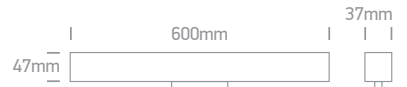
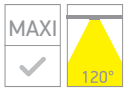
IP20



42100B | 25W | SMD 2835 | Linear light | Aluminium + PC



IP20



42100BL | 25W | SMD 2835 | Linear light | DALI | Aluminium + PC



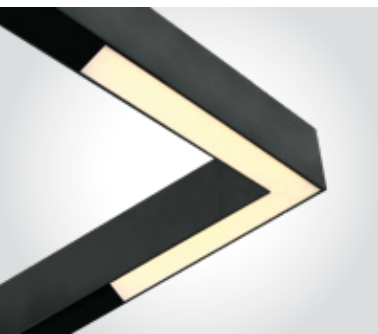
IP20



Order Code	Colour	Light Colour	CCT (K)	Watts	Lumen (lm)	Beam Angle	Input	Class	Box	Notes
42100AA/B/W	Black	Warm white	3000K	8W	640lm	120°	48V	II	50	-
42100BA/B/W	Black	Warm white	3000K	16W	1280lm	120°	48V	III	40	-
42100A/B/W	Black	Warm white	3000K	15W	1200lm	120°	48V	II	40	-
42100B/B/W	Black	Warm white	3000K	25W	2000lm	120°	48V	III	20	-
42100BL/B/W	Black	Warm white	3000K	25W	2000lm	120°	48V	III	20	-



Magnetic Linear Corners

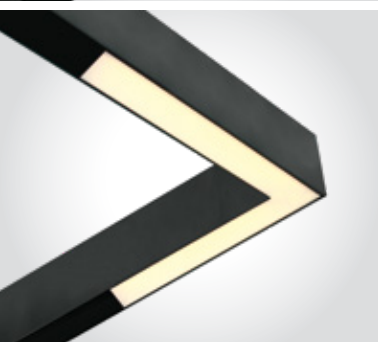
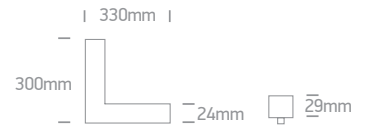


42100EA | 16W | SMD 2835 | Corner light | Aluminium + PC



new

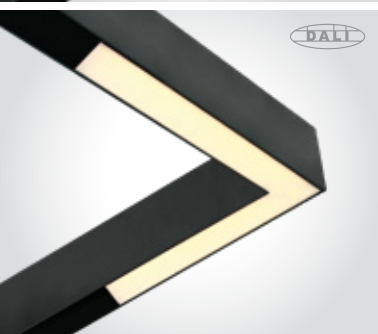
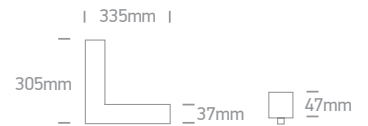
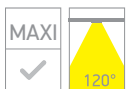
IP20



42100E | 25W | SMD 2835 | Corner light | Aluminium + PC



IP20



42100EL | 25W | SMD 2835 | Corner light | DALI | Aluminium + PC



new

IP20

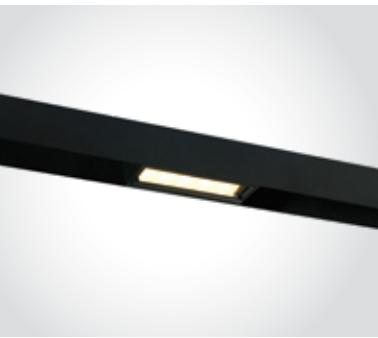


Order Code	Colour	Light Colour	CCT (K)	Watts	Lumen (lm)	Beam Angle	Input	Class	Box	Notes
42100EA/B/W	Black	Warm white	3000K	16W	1280lm	120°	48V	II	10	-
42100E/B/W	Black	Warm white	3000K	25W	2000lm	120°	48V	III	12	-
42100EL/B/W	Black	Warm white	3000K	25W	2000lm	120°	48V	III	12	-



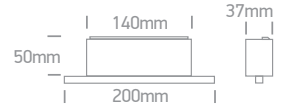
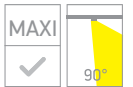
42106B

Magnetic Linear Lights



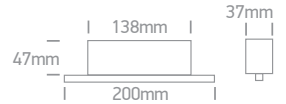
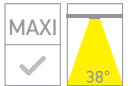
IP20

42120B | 12W | SMD 3535 | Linear light | Assymetric | Aluminium + PC



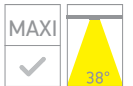
IP20

42102A | 12W | SMD 3535 | Linear spots | Aluminium



IP20

42102B | 22W | SMD 3535 | Linear spots | Aluminium



IP20



42102BL | 22W | SMD 3535 | Linear spots | DALI | Aluminium



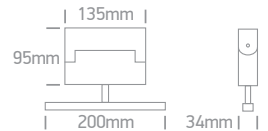
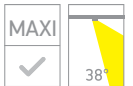
Order Code	Colour	Light Colour	CCT (K)	Watts	Lumen (lm)	Beam Angle	Input	Class	Box	Notes
42120B/B/W	Black	Warm white	3000K	12W	960lm	90°	48V	III	40	-
42102A/B/W	Black	Warm white	3000K	12W	960lm	38°	48V	III	40	-
42102B/B/W	Black	Warm white	3000K	22W	1760lm	38°	48V	III	30	-
42102BL/B/W	Black	Warm white	3000K	22W	1760lm	38°	48V	III	30	-



Magnetic Adjustable Linear Spots



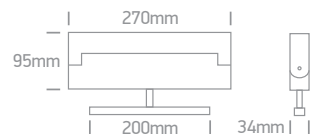
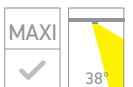
42106A | 12W | SMD 3535 | Linear spots | Adjustable | Aluminium



IP20



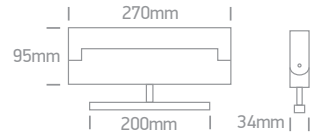
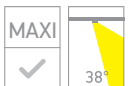
42106B | 22W | SMD 3535 | Linear spots | Adjustable | Aluminium



IP20



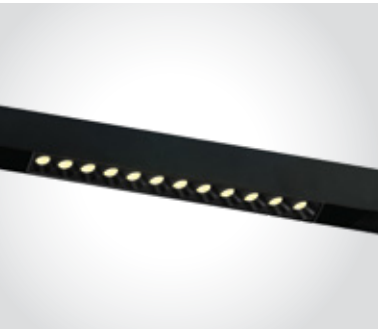
42106BL | 22W | SMD 3535 | Linear spots | DALI | Adjustable | Aluminium



IP20

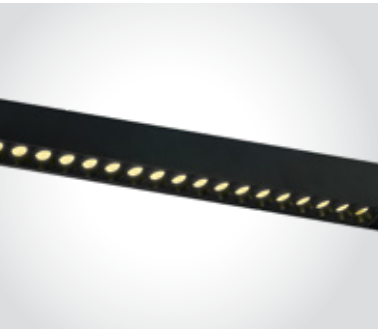
Order Code	Colour	Light Colour	CCT (K)	Watts	Lumen (lm)	Beam Angle	Input	Class	Box	Notes
42106A/B/W	Black	Warm white	3000K	12W	960lm	38°	48V	III	30	-
42106B/B/W	Black	Warm white	3000K	22W	1760lm	38°	48V	III	20	-
42106BL/B/W	Black	Warm white	3000K	22W	1760lm	38°	48V	III	20	-

Magnetic Linear Spots



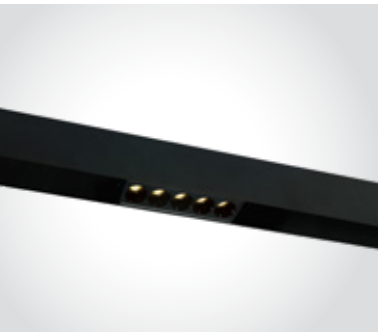
42112AA | 12W | SMD 3030 | Linear spots | Aluminium

new
IP20



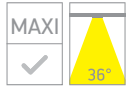
42112BA | 18W | SMD 3030 | Linear spots | Aluminium

new
IP20



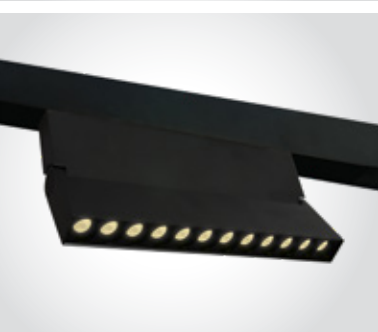
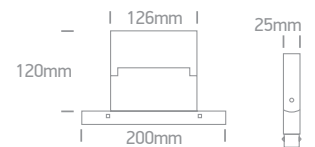
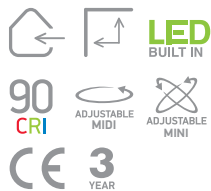
42104B | 12W | SMD 3535 | Linear spots | Aluminium

DARK LIGHT
IP20



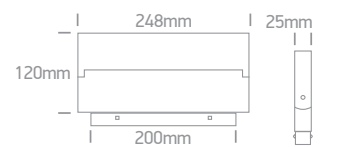
42124AA | 10W | SMD 3030 | Linear spots | Adjustable | Aluminium

new
IP20



42124BA | 20W | SMD 3030 | Linear spots | Adjustable | Aluminium

new
IP20



Order Code	Colour	Light Colour	CCT (K)	Watts	Lumen (lm)	Beam Angle	Input	Class	Box	Notes
42112AA/B/W	Black	Warm white	3000K	12W	960lm	50°	48V	III	50	-
42112BA/B/W	Black	Warm white	3000K	18W	1440lm	50°	48V	III	40	-
42104B/B/W	Black	Warm white	3000K	12W	840lm	36°	48V	III	40	-
42124AA/B/W	Black	Warm white	3000K	10W	800lm	38°	48V	III	30	-
42124BA/B/W	Black	Warm white	3000K	20W	1600lm	38°	48V	III	20	-



Magnetic Linear Tubes

42128A | 2x2W | SMD 3030 | Linear spots | Aluminium



new
IP20



42128B | 3x2W | SMD 3030 | Linear spots | Aluminium



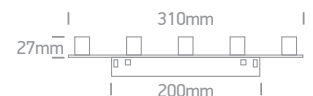
new
IP20



42128C | 5x2W | SMD 3030 | Linear spots | Aluminium

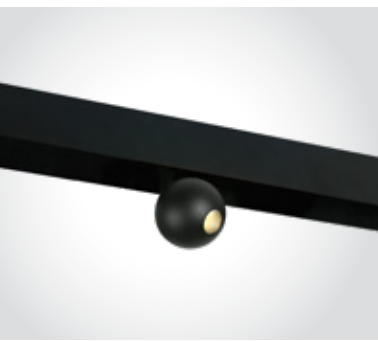
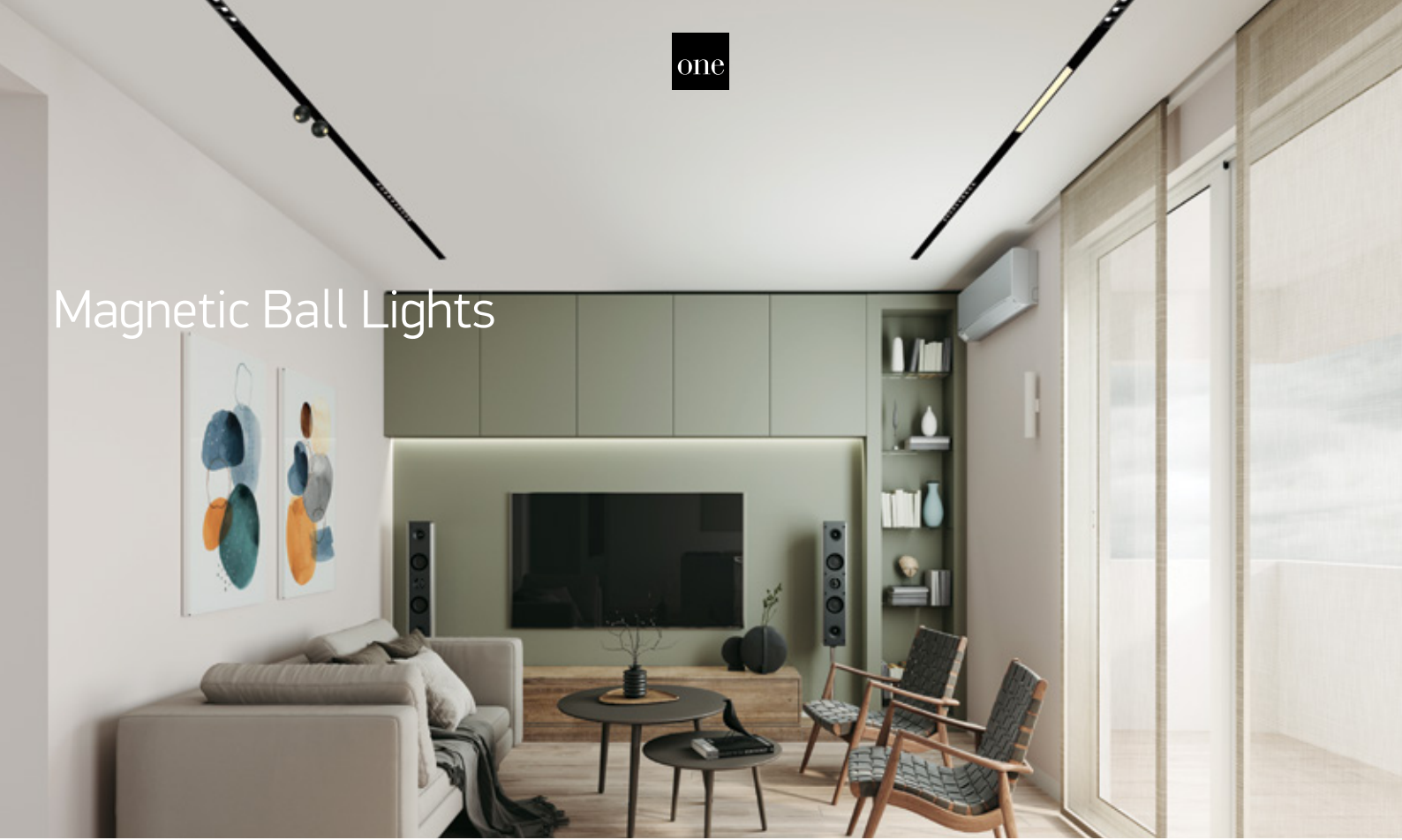


new
IP20



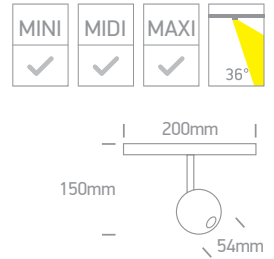
Order Code	Colour	Light Colour	CCT (K)	Watts	Lumen (lm)	Beam Angle	Input	Class	Box	Notes
42128A/B/W	Black	Warm white	3000K	2x2W	200lm	36°	48V	III	50	-
42128B/B/W	Black	Warm white	3000K	3x2W	300lm	36°	48V	III	50	-
42128C/B/W	Black	Warm white	3000K	5x2W	500lm	36°	48V	III	30	-

Magnetic Ball Lights

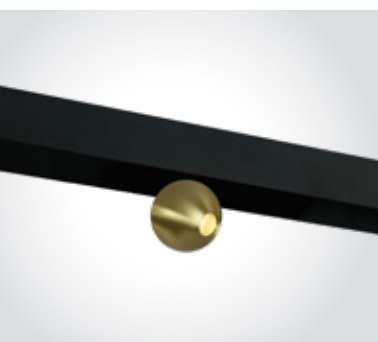


42134 | 7W | COB LED | Aluminium

LED BUILT IN
90 CRI
ADJUSTABLE

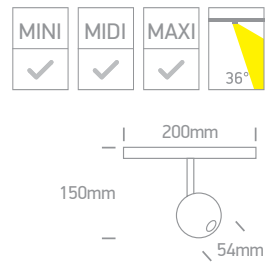


IP20



42134 | 7W | COB LED | Aluminium

LED BUILT IN
90 CRI
ADJUSTABLE

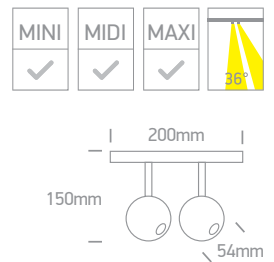


IP20



42134A | 2x7W | COB LED | Aluminium

LED BUILT IN
90 CRI
ADJUSTABLE



IP20

Order Code	Colour	Light Colour	CCT (K)	Watts	Lumen (lm)	Beam Angle	Input	Class		Notes
42134/B/W	Black	Warm white	3000K	7W	560lm	36°	48V		30	-
42134/BBS/W	Brushed brass	Warm white	3000K	7W	560lm	36°	48V		30	-
42134A/B/W	Black	Warm white	3000K	2x7W	1120lm	36°	48V		30	-

Magnetic Spots

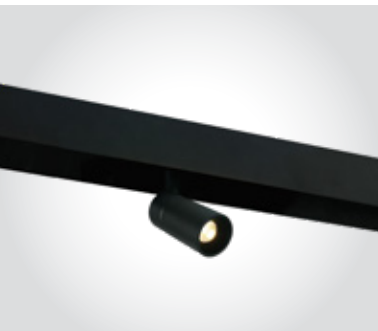
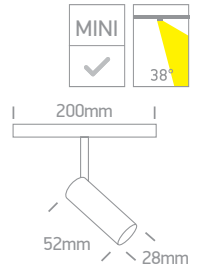


42122A | 3W | SMD 3535 | Aluminium

new
IP20

LED BUILT IN
90 CRI

 ADJUSTABLE
3 YEAR

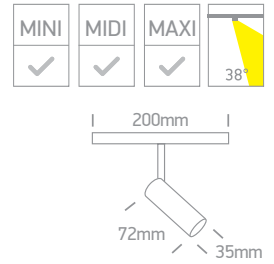


42108 | 6W | COB LED | Aluminium

IP20

LED BUILT IN
90 CRI

 ADJUSTABLE
3 YEAR



DALI

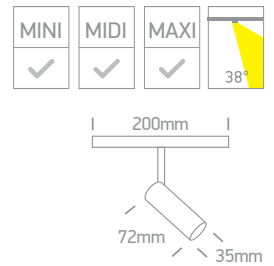
42108L | 6W | COB LED | DALI | Aluminium

new
IP20

LED BUILT IN
90 CRI

 DALI DIMMABLE

 ADJUSTABLE
3 YEAR

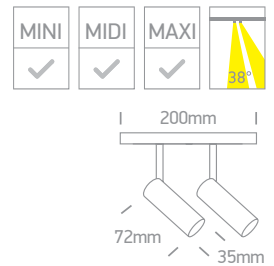


42108A | 2x6W | COB LED | Aluminium

IP20

LED BUILT IN
90 CRI

 ADJUSTABLE
3 YEAR



DALI

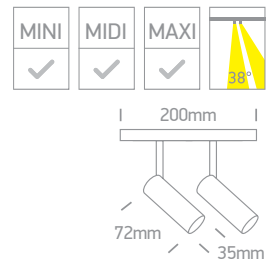
42108AL | 2x6W | COB LED | DALI | Aluminium

new
IP20

LED BUILT IN
90 CRI

 DALI DIMMABLE

 ADJUSTABLE
3 YEAR



Order Code	Colour	Light Colour	CCT (K)	Watts	Lumen (lm)	Beam Angle	Input	Class	Box	Notes
42122A/B/W	Black	Warm white	3000K	3W	240lm	38°	48V	III	30	-
42108/B/W	Black	Warm white	3000K	6W	480lm	38°	48V	III	30	-
42108L/B/W	Black	Warm white	3000K	6W	480lm	38°	48V	III	30	-
42108A/B/W	Black	Warm white	3000K	2x6W	960lm	38°	48V	III	20	-
42108AL/B/W	Black	Warm white	3000K	2x6W	960lm	38°	48V	III	20	-

Magnetic Spots



42110 | 8W | COB LED | Honeycomb | Aluminium

LED BUILT IN

90 CRI

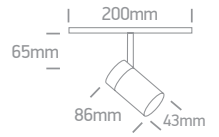
ADJUSTABLE

CE

3 YEAR



MINI	MIDI	MAXI	
✓	✓	✓	15°



DARK LIGHT
IP20



42114A | 12W | COB LED | Aluminium

LED BUILT IN

90 CRI

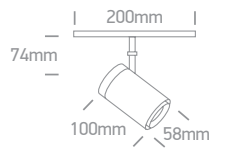
ADJUSTABLE

CE

3 YEAR



MINI	MIDI	MAXI	
✓	✓	✓	38°



IP20



42114B | 24W | COB LED | Aluminium

LED BUILT IN

90 CRI

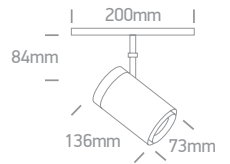
ADJUSTABLE

CE

3 YEAR



MINI	MIDI	MAXI	
✓	✓	✓	38°



IP20



42114BL | 24W | COB LED | DALI | Aluminium

LED BUILT IN

90 CRI

DALI DIMMABLE

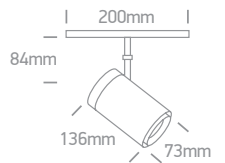
ADJUSTABLE

CE

3 YEAR



MINI	MIDI	MAXI	
✓	✓	✓	38°



IP20



42116C | 15W | COB LED | Aluminium

LED BUILT IN

90 CRI

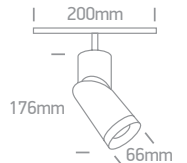
ADJUSTABLE

CE

3 YEAR



MINI	MIDI	MAXI	
✓	✓	✓	38°



IP20

Order Code	Colour	Light Colour	CCT (K)	Watts	Lumen (lm)	Beam Angle	Input	Class		Notes
42110/B/W	Black	Warm white	3000K	8W	640lm	15°	48V		30	-
42114A/B/W	Black	Warm white	3000K	12W	960lm	38°	48V		24	-
42114B/B/W	Black	Warm white	3000K	24W	1920lm	38°	48V		16	-
42114BL/B/W	Black	Warm white	3000K	24W	1920lm	38°	48V		16	-
42116C/B/W	Black	Warm white	3000K	15W	1200lm	38°	48V		16	-

Magnetic Spots

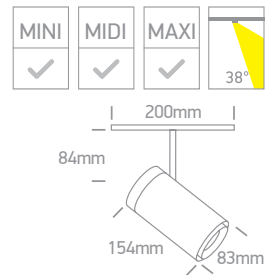


42114C | 30W | COB LED | Aluminium

LED BUILT IN
90 CRI
ADJUSTABLE

3 YEAR

IP20



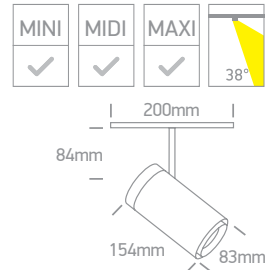
DALI

42114CL | 30W | COB LED | DALI | Aluminium

LED BUILT IN
90 CRI
DALI DIMMABLE
ADJUSTABLE

3 YEAR

IP20

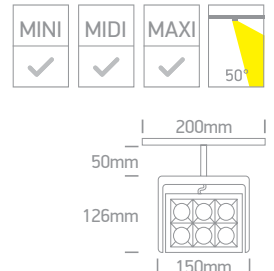


42118 | 26W | COB LED | Aluminium

LED BUILT IN
90 CRI
ADJUSTABLE

3 YEAR

IP20



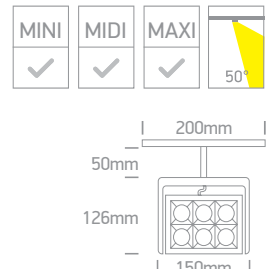
DALI

42118L | 26W | COB LED | DALI | Aluminium

LED BUILT IN
90 CRI
DALI DIMMABLE
ADJUSTABLE

3 YEAR

IP20



Order Code	Colour	Light Colour	CCT (K)	Watts	Lumen (lm)	Beam Angle	Input	Class	Box	Notes
42114C/B/W	Black	Warm white	3000K	30W	2400lm	38°	48V	III	16	-
42114CL/B/W	Black	Warm white	3000K	30W	2400lm	38°	48V	III	16	-
42118/B/W	Black	Warm white	3000K	26W	2080lm	50°	48V	III	20	-
42118L/B/W	Black	Warm white	3000K	26W	2080lm	50°	48V	III	20	-

one

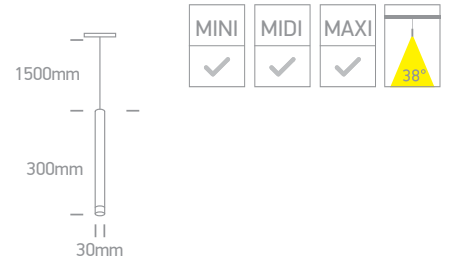
Magnetic Cylinder Pendants



42130A | 5W | COB LED | Aluminium

LED BUILT IN
90 CRI
3 YEAR

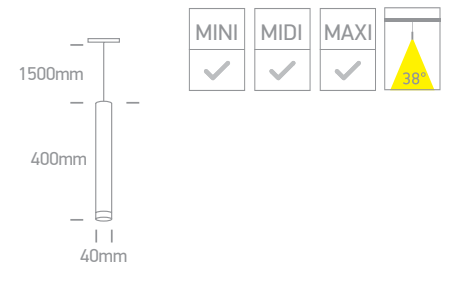
DARK LIGHT
IP20



42130B | 9W | COB LED | Aluminium

LED BUILT IN
90 CRI
3 YEAR

DARK LIGHT
IP20

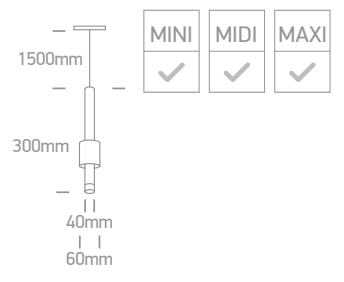
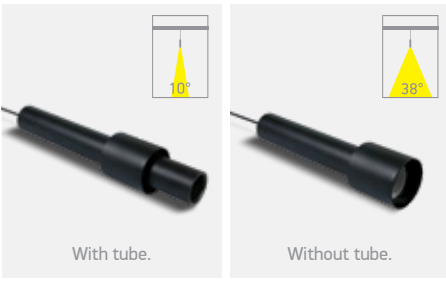


42132 | 7W | COB LED | Aluminium

With removable tube.

LED BUILT IN
90 CRI
3 YEAR

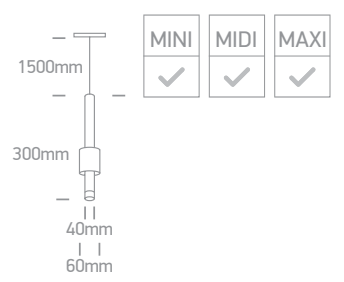
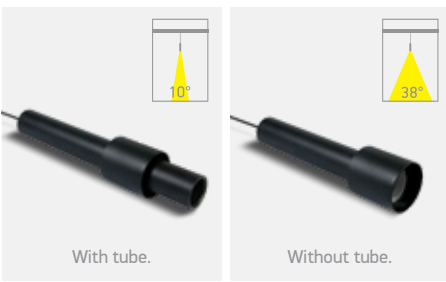
DARK LIGHT
IP20



42132L | 7W | COB LED | DALI | Aluminium

LED BUILT IN
90 CRI
3 YEAR

new
DARK LIGHT
IP20



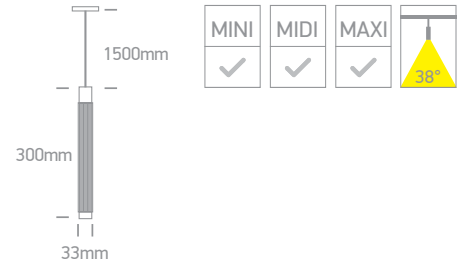
Order Code	Colour	Light Colour	CTT (K)	Watts	Lumen (lm)	Beam Angle	Input	Class	Box	Notes
42130A/B/W	Black	Warm white	3000K	5W	350lm	38°	48V	III	30	-
42130B/B/W	Black	Warm white	3000K	9W	630lm	38°	48V	III	30	-
42132/B/W	Black	Warm white	3000K	7W	490lm	10° / 38°	48V	III	30	-
42132L/B/W	Black	Warm white	3000K	7W	490lm	10° / 38°	48V	III	30	-

Magnetic Pendants



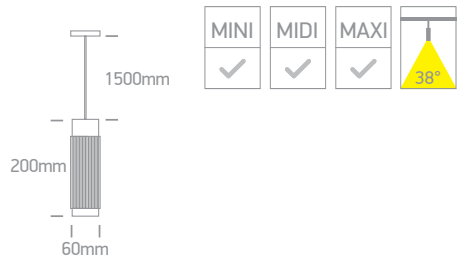
42126AA | 5W | LED | Aluminium

new
 DARK LIGHT
 IP20



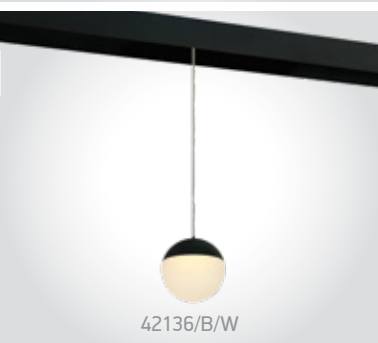
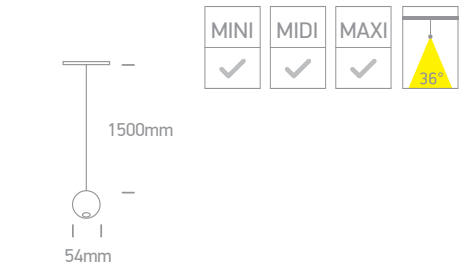
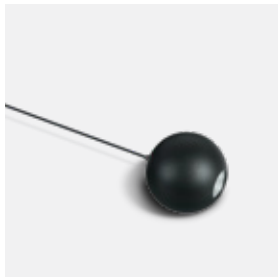
42126BA | 12W | LED | Aluminium

new
 DARK LIGHT
 IP20



42134B | 7W | COB LED | Aluminium

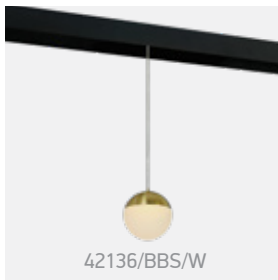
IP20



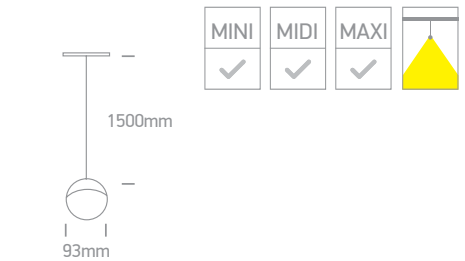
42136/B/W

42136 | 10W | SMD 2835 | Aluminium + acrylic

IP20



42136/BBS/W



Order Code	Colour	Light Colour	CCT (K)	Watts	Lumen (lm)	Beam Angle	Input	Class		Notes
42126AA/B/W	Black/Brass	Warm white	3000K	5W	350lm	38°	48V		50	-
42126BA/B/W	Black/Brass	Warm white	3000K	12W	840lm	38°	48V		25	-
42134B/B/W	Black	Warm white	3000K	7W	560lm	36°	48V		30	-
42136/B/W	Black	Warm white	3000K	10W	700lm	-	48V		15	-
42136/BBS/W	Brushed brass	Warm white	3000K	10W	700lm	-	48V		15	-