

11 Office & Kitchen > LED Linear Accessories Medium size

050170D/B/C



8W LED Corner for 38150A and 38151A.

Complete with 250mA driver.

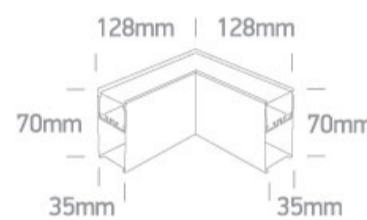
Complies with standard EN60598-1 and any other specific standards.



Downloads



Dimensions

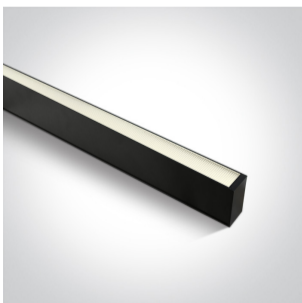


Accessories



050170

Related items



38150A/B/C



38151A/B/C



Physical Specification

Item Group

11 Office & Kitchen

Family	LED Linear Accessories Medium size
Order Code	050170D/B/C
Colour	Black
Material	Aluminium
Shape	Rectangular
Length	128mm each side
Width	35mm
Height	70mm
Surface Ceiling	Yes
Suspended Ceiling	Yes
Indoor	Yes
Adjustable	No


#### Electrical Characteristics

Gear	Built In
Fitting + Driver	
Input Voltage	220-240V
50 Hz	Yes
60 Hz	Yes
Safety Class	
Power(Watts)	8W
IP Rating	IP20
Light Source	LED built in
Dimmable	No
Cable Length	150cm
F Mark	


Fitting	
Input Type	Constant Current
Input Current	250mA

Voltage	30V
Power(Watts)	7,5W
IP Rating	IP20
Light Source	LED built in
LED Type	SMD 2835
LED Brand	Epistar
LED Number	48

## Gear

Gear Type	Led Driver
Input Voltage	220-240V
50 Hz	Yes
60 Hz	Yes
Power(Watts)	7-10,5W
Power Factor	0,95
Constant Current	Yes
250mA	28-42V
IP Rating	IP20
Safety Class	
Dimmable	No
Brand	BOKE
Protection	0

## Illumination Data

Colour Temperature	4000K
Lumen Output	680lm
Light Efficiency	85lm/W
CRI	90
Beam Angle	120°
Illumination Diagram	
UGR	19

## Packing Info

Box Weight	0.720kg
Pcs/Carton	10
Barcode	5291889075684
HS Code	9405413990

## Certification & Warranty

Warranty	3 years
----------	---------

switch to  
**one light!**

one  
LIGHT

