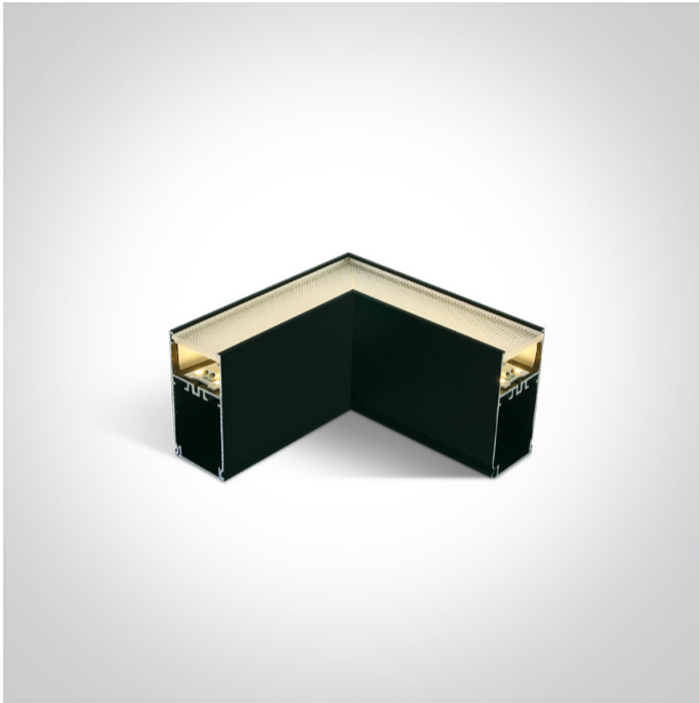


New 2025 Edition 2>Office & Kitchen

050170D/B/V



CCT & Power variable 14W LED Corner for 38150A and 38151A.

Complete with power variable driver.

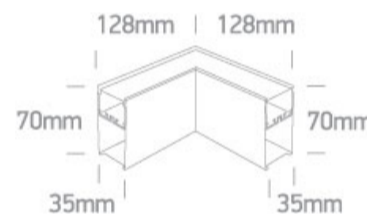
Complies with standard EN60598-1 and any other specific standards.



Downloads



Dimensions

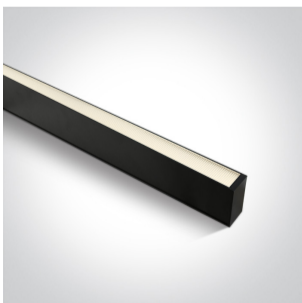


Accessories



050170

Related items



38150A/B/V



38151A/B/V



Physical Specification

Item Group

New 2025 Edition 2

Family	Office & Kitchen
Order Code	050170D/B/V
Colour	Black
Material	Aluminium
Shape	Rectangular
Length	128mm each side
Width	35mm
Height	70mm
Surface Ceiling	Yes
Suspended Ceiling	Yes
Indoor	Yes
Adjustable	No


#### Electrical Characteristics

Gear	Built In
Fitting + Driver	
Input Voltage	220-240V
50 Hz	Yes
60 Hz	Yes
Safety Class	
Power(Watts)	6W-8W-10W-14W
IP Rating	IP20
Light Source	LED built in
Dimmable	No
Cable Length	150cm
F Mark	

Fitting	
Input Type	Constant Current
IP Rating	IP20

Light Source	LED built in
LED Type	SMD
Gear	
Gear Type	Led Driver
Input Voltage	220-240V
50 Hz	Yes
60 Hz	Yes
IP Rating	IP20
Dimmable	No
Protection	0

### Illumination Data

Colour Temperature	3000K-4000K-5000K
Lumen Output	680lm (8W)
Light Efficiency	85lm/W
CRI	90
Illumination Diagram	
UGR	19

### Packing Info

Pcs/Carton	10
------------	----

### Certification & Warranty

Warranty

3 Years

Weee Directive

Yes

switch to  
**one light!**

one  
LIGHT

