

02 Recessed Spots Fixed LED>The LED Glass Range

10101G/D



1W LED Glass range recessed spot IP20.

Requires 350mA driver.

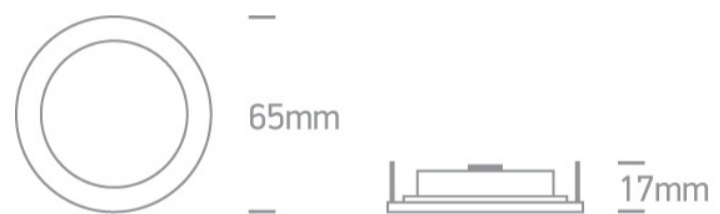
Complies with standard EN60598-1 and any other specific standards.



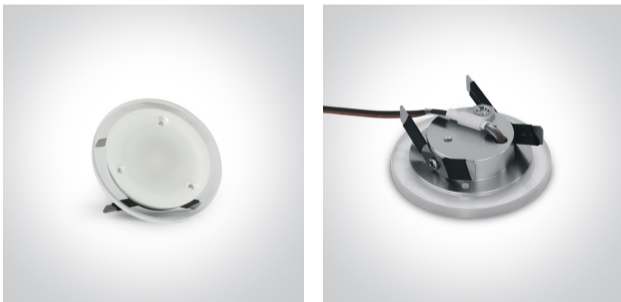
Downloads



Dimensions



Gallery



Must be ordered separately



89004





89004T

Physical Specification

| | |
|----------------------|-----------------------------|
| Item Group | 02 Recessed Spots Fixed LED |
| Family | The LED Glass Range |
| Order Code | 10101G/D |
| Material | Acrylic |
| Shape | Circular |
| Height | 17mm |
| Diameter | 65mm |
| Cutout Hole Diameter | 40mm |
| Recessed Ceiling | Yes |
| Depth Required | 45mm |
| Indoor | Yes |
| Adjustable | No |

Electrical Characteristics

Fitting

| | |
|---------------|---|
| Input Type | Constant Current |
| Input Current | 350mA |
| Safety Class |  |
| Power(Watts) | 1W |
| IP Rating | IP20 |
| Light Source | LED built in |
| LED Number | 3 |
| Cable Length | 40cm |
| F Mark |  |

Illumination Data

| | |
|--------------------|-------|
| Colour Temperature | 6000K |
| Lumen Output | 60lm |

Light Efficiency

60lm/W

Illumination Diagram



Packing Info

Pcs/Carton

80

Barcode

5291889026464

HS Code

9405409900

Certification & Warranty

Warranty

3 Years

Weee Directive

Yes

switch to
one light!

one
LIGHT

