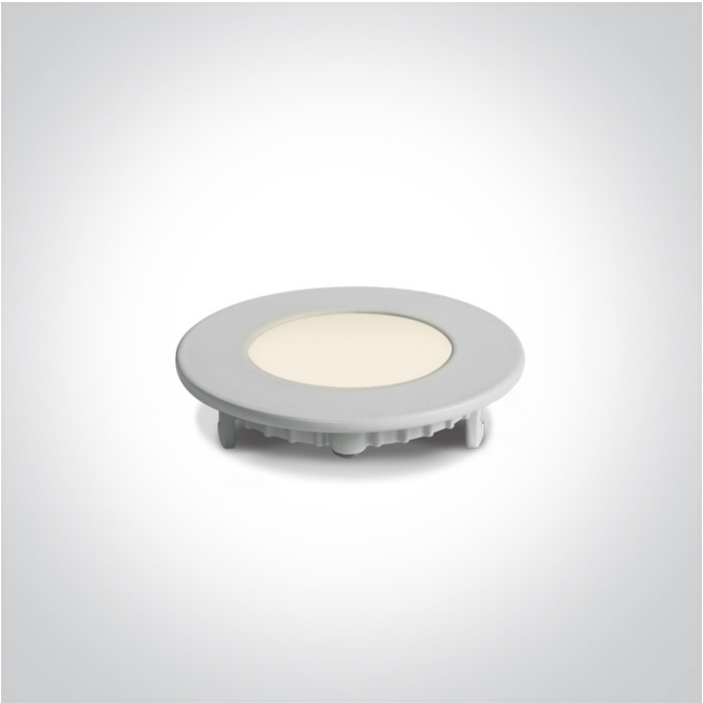




06 Downlights Fixed LED>The 3-12W Round Recessed Panels CCT V

10103FA/W/V



CCT Variable 3W slim downlight LED, IP20, ideal for commercial applications such as offices, galleries and showrooms.

Supplied with 300mA non-dimmable LED driver.

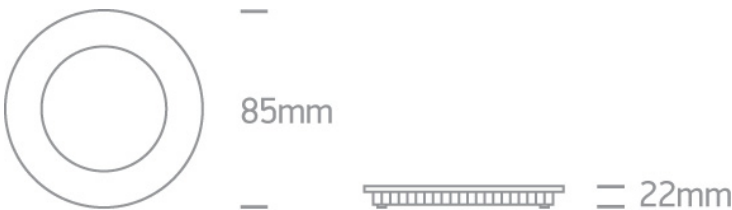
Complies with standard EN60598-1 and any other specific standards.



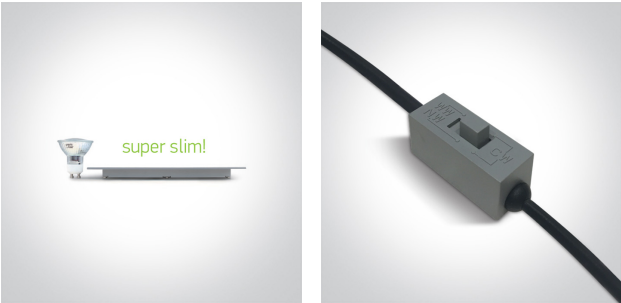
Downloads



Dimensions



Gallery






Physical Specification


Item Group	06 Downlights Fixed LED
Family	The 3-12W Round Recessed Panels CCT V
Order Code	10103FA/W/V
Colour	White
Material	Die Cast
Diffuser Material	Acrylic
Shape	Circular

Height	22mm
Diameter	85mm
Cutout Hole Diameter	70mm
Recessed Ceiling	Yes
Depth Required	50mm
Indoor	Yes
Adjustable	No


Electrical Characteristics

Gear	External-Included
Fitting + Driver	
Input Voltage	220-240V
50 Hz	Yes
60 Hz	Yes
Safety Class	
Power(Watts)	3W
IP Rating	IP20
Light Source	LED built in
Dimmable	No
F Mark	

Fitting	
Input Type	Constant Current
Input Current	300mA
Safety Class	
IP Rating	IP20
Light Source	LED built in
LED Type	SMD 2835
LED Brand	Epistar

LED Number	30
Gear	
Gear Type	Led Driver
Input Voltage	220-240V
50 Hz	Yes
60 Hz	Yes
Power(Watts)	1,5-3W
Constant Current	Yes
300mA	5-10V DC
IP Rating	IP20
Safety Class	
Dimmable	No
Ambient Temp	50°C
Operating Temp	75°C
Housing Material	Plastic
Brand	Lifud

Illumination Data

Colour Temperature	3000K-4000K-5700K
Lumen Output	240lm
Light Efficiency	80lm/W
CRI	80
Beam Angle	120°
Illumination Diagram	

Packing Info

Box Weight	0.141kg
Pcs/Carton	30
Barcode	5291889078876

HS Code

9405119090

Certification & Warranty

Warranty

3 years

Weee Directive

Yes

switch to  
one light!

