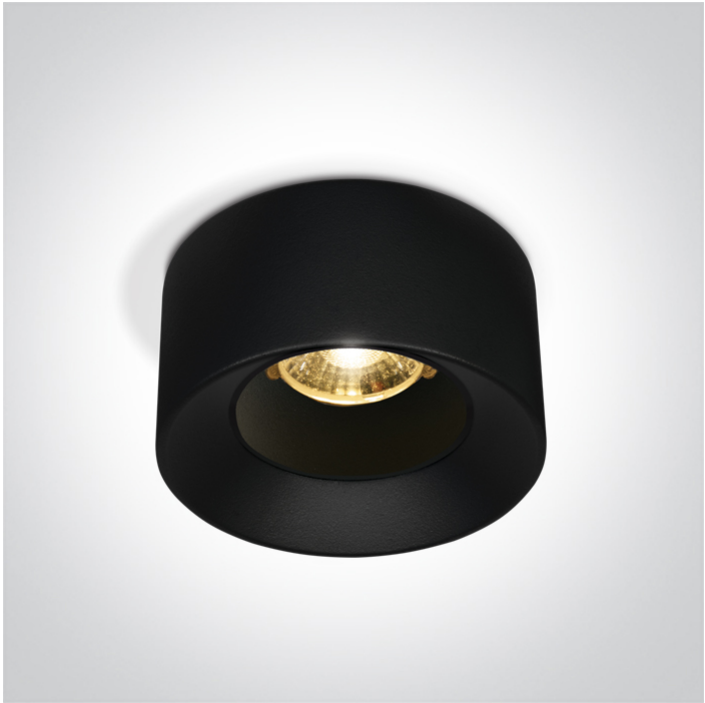




New 2025 Edition 2>Recessed Spots Fixed LED

10107A/B/W



7W semi-recessed spot, IP20.

Complete with driver.

Complies with standard EN60598-1 and any other specific standards.



Downloads



Dimensions



Physical Specification

| | |
|----------------------|--------------------------|
| Item Group | New 2025 Edition 2 |
| Family | Recessed Spots Fixed LED |
| Order Code | 10107A/B/W |
| Colour | Black |
| Material | Die Cast |
| Shape | Circular |
| Height | 57mm |
| Diameter | 65mm |
| Cutout Hole Diameter | 54mm |
| Recessed Ceiling | Yes |
| Depth Required | 40mm |
| Indoor | Yes |

Adjustable

No

Electrical Characteristics

Gear

External-Included

Fitting + Driver

Input Voltage

220-240V

50 Hz

Yes

60 Hz

Yes

Safety Class



Power(Watts)

7W

IP Rating

IP20

Light Source

LED built in

Dimmable

No

Fitting

Input Type

Constant Current

Safety Class



IP Rating

IP20

Light Source

LED built in

LED Type

SMD

F Mark



Gear

Gear Type

Led Driver

Input Voltage

220-240V

50 Hz

Yes

60 Hz

Yes

Output


180mA

IP Rating

IP20

Safety Class



| | |
|----------------------|---|
| Dimmable | No |
| Illumination Data | |
| Colour Temperature | 3000K |
| Lumen Output | 600lm |
| Light Efficiency | 85lm/W |
| CRI | 90 |
| Beam Angle | 38° |
| Illumination Diagram |  |

| | |
|--------------|----|
| Packing Info | |
| Pcs/Carton | 50 |

| | |
|--------------------------|---------|
| Certification & Warranty | |
| Warranty | 3 Years |
| Weee Directive | Yes |

switch to
one light!

