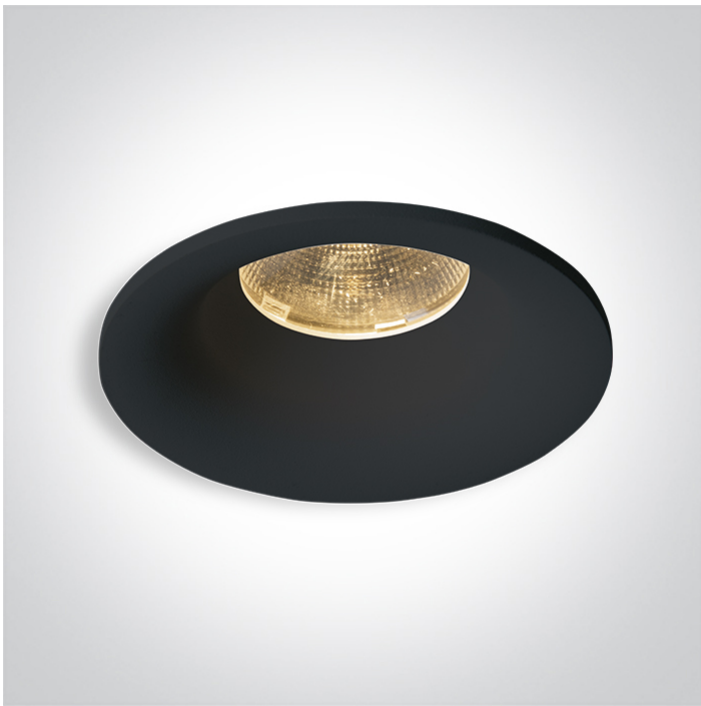


New 2025 Edition 2>Recessed Spots Fixed LED

10112C/B/W



12W COB LED Dark Light recessed spot IP65.

Requires 700mA driver.

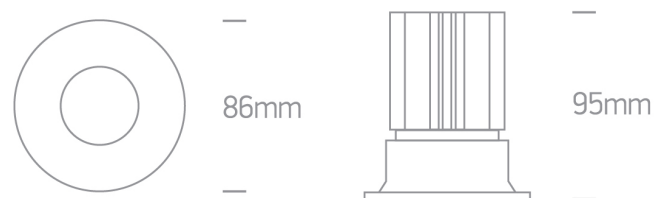
Complies with standard EN60598-1 and any other specific standards.



Downloads



Dimensions



Gallery



Must be ordered separately



89015A

Related items




89015AT

Physical Specification

Item Group	New 2025 Edition 2
Family	Recessed Spots Fixed LED
Order Code	10112C/B/W
Colour	Black
Material	Die Cast
Shape	Circular
Height	95mm
Diameter	86mm
Cutout Hole Diameter	75mm
Recessed Ceiling	Yes
Depth Required	120mm
Indoor	Yes
Outdoor	Yes
Adjustable	No

Electrical Characteristics

Fitting	
Input Type	Constant Current
Input Current	700mA
Safety Class	III
Power(Watts)	12W
IP Rating	IP65
Light Source	LED built in

LED Type	COB
Cable Length	40cm
F Mark	

Illumination Data

Colour Temperature	3000K
Lumen Output	1100lm
Light Efficiency	91,67lm/W
CRI	90
Beam Angle	40°
Illumination Diagram	
Dark Light	Yes

Packing Info

Box Length	12cm
Box Width	9cm
Box Height	9cm
Box Weight	0.338kg
Pcs/Carton	50
Barcode	5291889060369
HS Code	9405413990

Certification & Warranty

Warranty	5 years
----------	---------

switch to
one light!

one
LIGHT

