

06 Downlights Fixed LED > Architectural Downlights Die cast

10128/G/D



28W LED architectural downlight, IP20.

Complete with LED driver.

Complies with standard EN60598-1 and any other specific standards.



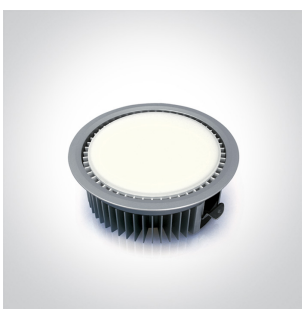
Downloads



Dimensions



Gallery





Physical Specification

Item Group	06 Downlights Fixed LED
Family	Architectural Downlights Die cast
Order Code	10128/G/D
Colour	Grey
Material	Die Cast
Diffuser Material	Acrylic
Shape	Circular

Height	85mm
Diameter	195mm
Cutout Hole Diameter	169mm
Recessed Ceiling	Yes
Depth Required	110mm
Indoor	Yes
Adjustable	No

Electrical Characteristics

Gear	Built In
Fitting + Driver	
Input Voltage	220-240V
50 Hz	Yes
60 Hz	Yes
Safety Class	
Power(Watts)	28W
IP Rating	IP20
Light Source	LED built in
Dimmable	No
F Mark	

Fitting	
Input Type	Constant Current
IP Rating	IP20
Light Source	LED built in

Gear	
Gear Type	Led Driver
Input Voltage	220-240V
50 Hz	Yes

60 Hz
IP Rating
Safety Class
Dimmable
Housing Material
Brand

Yes
IP20

No
Plastic
One Light

Illumination Data

Colour Temperature
Lumen Output
Light Efficiency
CRI
Beam Angle
Illumination Diagram

6000K
1400lm
50lm/W
80
90°


Packing Info

Box Length
Box Width
Box Height
Box Weight
Pcs/Carton
Barcode
HS Code

25cm
21,5cm
11,5cm
1.400kg
10
5291889027386
9405413990

Certification & Warranty

switch to
one light!

one
LIGHT

