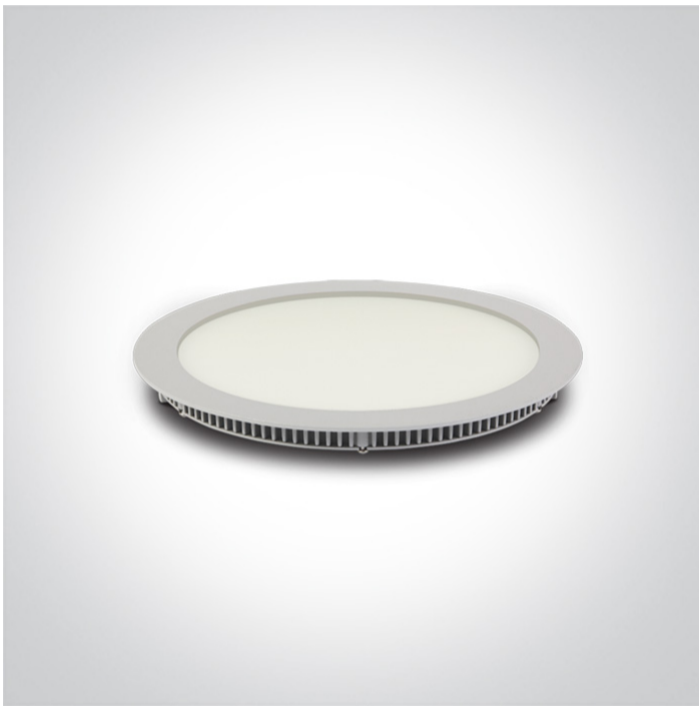


06 Downlights Fixed LED>The 18-30W Round Recessed Panels CCT V

10130FA/W/V



CCT Variable 30W slim downlight LED, IP20, ideal for commercial applications such as offices, galleries and showrooms.

Supplied with 800mA non-dimmable LED driver.

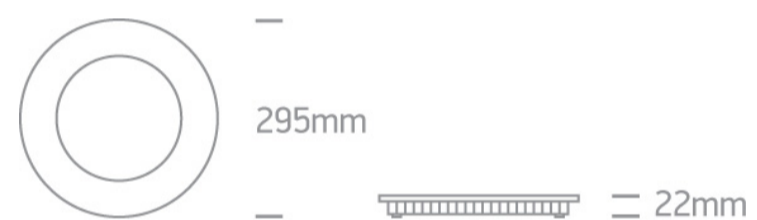
Complies with standard EN60598-1 and any other specific standards.



Downloads



Dimensions



Gallery






Physical Specification

| | |
|-------------------|--|
| Item Group | 06 Downlights Fixed LED |
| Family | The 18-30W Round Recessed Panels CCT V |
| Order Code | 10130FA/W/V |
| Colour | White |
| Material | Die Cast |
| Diffuser Material | Acrylic |
| Shape | Circular |

| | |
|----------------------|-------|
| Height | 22mm |
| Diameter | 295mm |
| Cutout Hole Diameter | 285mm |
| Recessed Ceiling | Yes |
| Depth Required | 50mm |
| Indoor | Yes |
| Adjustable | No |

Electrical Characteristics

| Gear | External-Included |
|------------------|---|
| Fitting + Driver | |
| Input Voltage | 220-240V |
| 50 Hz | Yes |
| 60 Hz | Yes |
| Safety Class |  |
| Power(Watts) | 30W |
| IP Rating | IP20 |
| Light Source | LED built in |
| Dimmable | No |
| F Mark |  |

| Fitting | |
|---------------|---|
| Input Type | Constant Current |
| Input Current | 800mA |
| Safety Class |  |
| IP Rating | IP20 |
| Light Source | LED built in |
| LED Type | SMD 2835 |
| LED Brand | Epistar |
| LED Number | 192 |

Gear

Gear Type

Led Driver

Input Voltage

220-240V

50 Hz

Yes

60 Hz

Yes

Power(Watts)

30W

Constant Current

Yes

800mA

33-40V

IP Rating

IP20

Safety Class



Dimmable

No

Ambient Temp

50°C

Operating Temp

75°C

Housing Material

Plastic

Brand

Lifud

Illumination Data

Colour Temperature

3000K-4000K-5700K

Lumen Output

3300lm

Light Efficiency

110lm/W

CRI

80

Beam Angle

120°

Illumination Diagram



Packing Info

Pcs/Carton

12

Barcode

5291889078951

HS Code

9405119090

Warranty

3 years

Weee Directive

Yes

switch to
one light!

one
LIGHT

