

03 Recessed Spots Adjustable > The Trimless GU10 Round Range

## 11105UTR/W



Recessed Trimless adjustable MR16 spot with GU10 lamp holder.

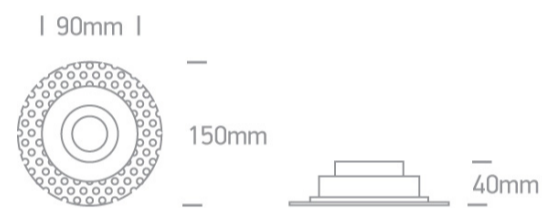
Complies with standard EN60598-1 and any other specific standards.



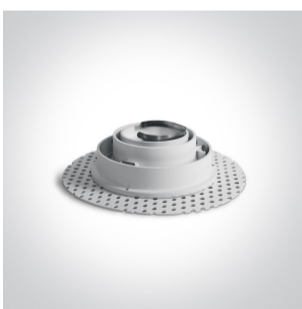
### Downloads



### Dimensions



### Gallery



### Physical Specification

Item Group

03 Recessed Spots Adjustable

Family

The Trimless GU10 Round Range

Order Code

11105UTR/W

Colour

White

Material

Die Cast

Shape



Circular

Height

40mm

Diameter	150mm
Cutout Hole Diameter	105mm
Recessed trimless ceiling	Yes
Depth Required	120mm
Indoor	Yes
Adjustable	2 Directions

#### Electrical Characteristics

Gear	No
Fitting + Driver	
Input Voltage	100-240V
50 Hz	Yes
60 Hz	Yes
Safety Class	
Power(Watts)	10W
IP Rating	IP20
Light Source	Replaceable lamp
Lamp Holder	GU10
Number of Lamps	1
Dimmable	N/A
Cable Length	20cm
F Mark	

#### Illumination Data

Illumination Diagram	
Dark Light	Yes

#### Packing Info

Box Length	15,5cm
------------	--------

Box Width	15,5cm
Box Height	5,2cm
Box Weight	0,38Kg
Pcs/Carton	20
Carton Length	33cm
Carton Width	33cm
Carton Height	29cm
Carton Weight	7,7Kg
Barcode	5291889057185
HS Code	9405409900

#### Certification & Warranty

Warranty	5 Years
Weee Directive	Yes

switch to  
**one light!**

one  
LIGHT

