

07 Downlights Adjustable LED>The COB Semi Trimless Range

## 11118TR/G/W



18W COB LED Recessed Adjustable downlight, semi trimless, IP20.

Complete 450mA driver.

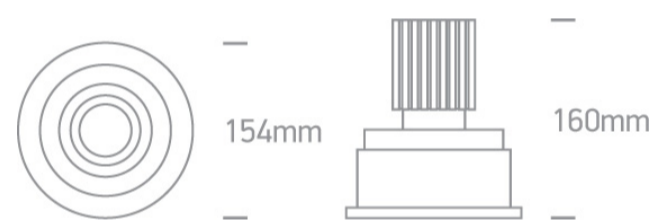
Complies with standard EN60598-1 and any other specific standards



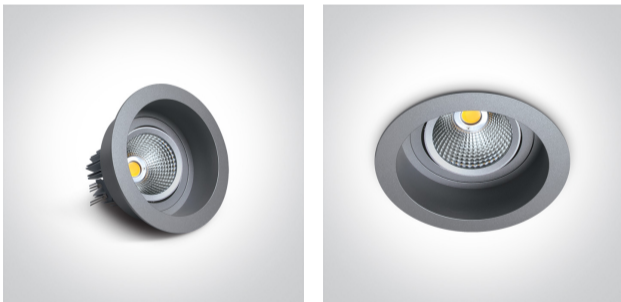
### Downloads



### Dimensions



### Gallery






### Physical Specification

|            |                              |
|------------|------------------------------|
| Item Group | 07 Downlights Adjustable LED |
| Family     | The COB Semi Trimless Range  |
| Order Code | 11118TR/G/W                  |
| Colour     | Grey                         |
| Material   | Aluminium                    |
| Shape      | Circular                     |
| Height     | 160mm                        |

|                      |              |
|----------------------|--------------|
| Diameter             | 154mm        |
| Cutout Hole Diameter | 135mm        |
| Recessed Ceiling     | Yes          |
| Depth Required       | 200mm        |
| Indoor               | Yes          |
| Adjustable           | 2 Directions |

## Electrical Characteristics

| Gear             | External-Included   |
|------------------|---|
| Fitting + Driver |   |
| Input Voltage    | 100-240V  |
| 50 Hz            | Yes   |
| 60 Hz            | Yes   |
| Safety Class     |  |
| Power(Watts)     | 18W   |
| IP Rating        | IP20  |
| Light Source     | LED built in  |
| Dimmable         | No  |
| F Mark           |  |

| Fitting       |   |
|---------------|---|
| Input Type    | Constant Current  |
| Input Current | 450mA   |
| Voltage       | 38V   |
| Safety Class  |  |
| Power(Watts)  | 17,4W   |
| IP Rating     | IP20  |
| Light Source  | LED built in  |
| LED Type      | COB   |
| LED Brand     | Cree  |

LED Number

1

F Mark



## Gear

Gear Type

Led Driver

Input Voltage

100-240V

50 Hz

Yes

60 Hz

Yes

Power(Watts)

16-20W

Power Factor

0,9

Constant Current

Yes

450mA

35-45V

IP Rating

IP20

Safety Class



Dimmable

No

Housing Material

Plastic

Output Terminal

Connector

Brand

0

Protection

0

## Illumination Data

Colour Temperature

3000K

Lumen Output

1120lm

Light Efficiency

62,22lm/W

CRI

80

Beam Angle

35°

Illumination Diagram



Dark Light

Yes

## Packing Info

|            |               |
|------------|---------------|
| Box Length | 28cm          |
| Box Width  | 20cm          |
| Box Height | 19cm          |
| Pcs/Carton | 20            |
| Barcode    | 5291889032915 |
| HS Code    | 9405409900    |

#### Certification & Warranty

Warranty

2 Years

switch to  
**one light!**

one  
LIGHT

