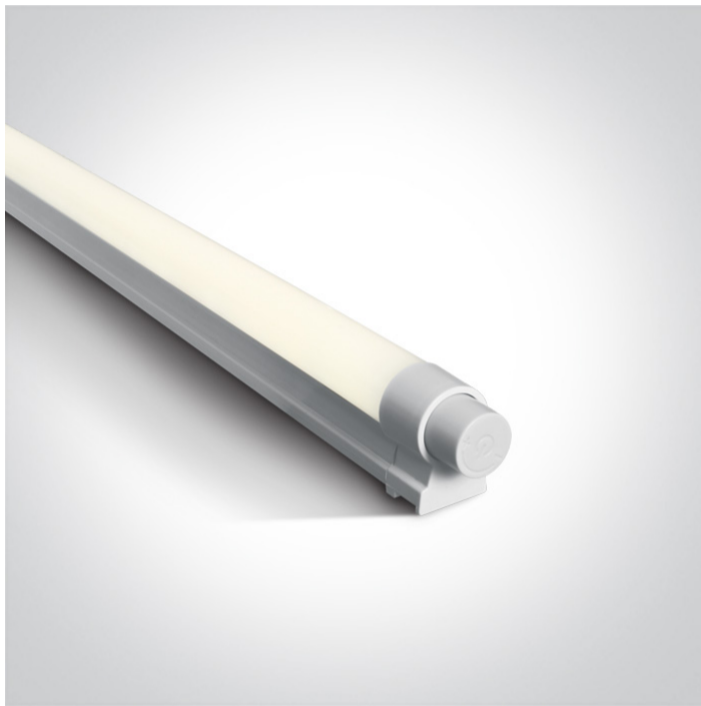


18 Bathroom>Mirror Lights

38110BD



10W Variable colour temperature Mirror Light , IP20 .

Complete with driver LED driver.

Complies with standard EN60598-1 and any other specific standards.



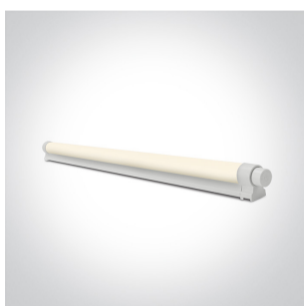
Downloads



Dimensions



Gallery



Physical Specification

Item Group	18 Bathroom
Family	Mirror Lights
Order Code	38110BD
Material	PC
Shape	Rectangular
Length	615mm
Width	24mm

Height	36mm
Surface Ceiling	Yes
Surface Wall	Yes
Indoor	Yes

Electrical Characteristics

Gear	Built In
------	----------

Fitting + Driver


Input Voltage	220-240V
50 Hz	Yes
60 Hz	Yes
Safety Class	
Power(Watts)	10W
IP Rating	IP20
Light Source	LED built in
Dimmable	Yes
Cable Length	1,5m

Fitting


Input Type	Constant Current
Power(Watts)	10W
IP Rating	IP20
Light Source	LED built in
LED Type	SMD 2835
F Mark	

Gear

Gear Type	Led Driver
Input Voltage	220-240V
50 Hz	Yes

60 Hz	Yes
Power(Watts)	10W
Constant Current	Yes
IP Rating	IP20
Safety Class	
Brand	0
Protection	0

Illumination Data

Colour Temperature	2700K-6500K
Lumen Output	700lm
Light Efficiency	70lm/W
CRI	80
Illumination Diagram	

Packing Info

Box Length	62cm
Box Width	5,5cm
Box Height	5cm
Box Weight	0.340kg
Pcs/Carton	20
Barcode	5291889055907
HS Code	9405114090

Certification & Warranty

switch to
one light!

one
LIGHT

