

21 Industrial & Floodlights > The IP66 Industrial LED Range

## 38115LB/C



15W industrial linear light, IP66.

Complete with non-dimmable LED driver.

Supplied with 2 fixing clips.

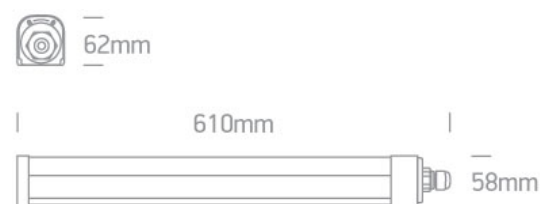
Complies with standard EN60598-1 and any other specific standards.



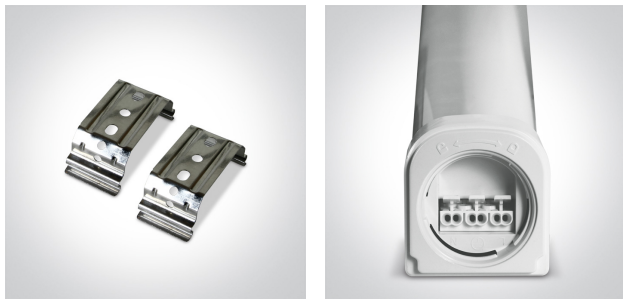
### Downloads



### Dimensions



### Gallery





### Physical Specification

Item Group	21 Industrial & Floodlights
Family	The IP66 Industrial LED Range
Order Code	38115LB/C
Material	PC
Shape	Rectangular
Length	610mm
Width	62mm

Height	58mm
Surface Ceiling	Yes
Surface Wall	Yes
Outdoor	Yes
IK Rating	8

## Electrical Characteristics

Gear	Built In
Fitting + Driver	
Input Voltage	220-240V
50 Hz	Yes
60 Hz	Yes
Safety Class	
Power(Watts)	15W
IP Rating	IP66
Light Source	LED built in
Dimmable	No
F Mark	

Fitting	
Input Type	Constant Current
Power(Watts)	15W
IP Rating	IP20
Light Source	LED built in
LED Type	SMD 2835
LED Brand	Sanan

Gear	
Gear Type	Led Driver
Input Voltage	220-240V


50 Hz
60 Hz
Power(Watts)
Constant Current
Output
Voltage Range
IP Rating
Safety Class
Dimmable

Yes
Yes
15W
Yes
140mA
89-109V
IP20

No

### Illumination Data

Colour Temperature
Lumen Output
Light Efficiency
CRI
Illumination Diagram

4000K
1725lm
115lm/W
80


### Packing Info

Box Weight
Pcs/Carton
Barcode
HS Code

0.540kg
15
5291889074328
9405114090

### Energy Label



Energy Class

E

Energy Consumption

15KWh/1000h

Certification & Warranty

Warranty

2 years

switch to  
**one light!**

one  
LIGHT

