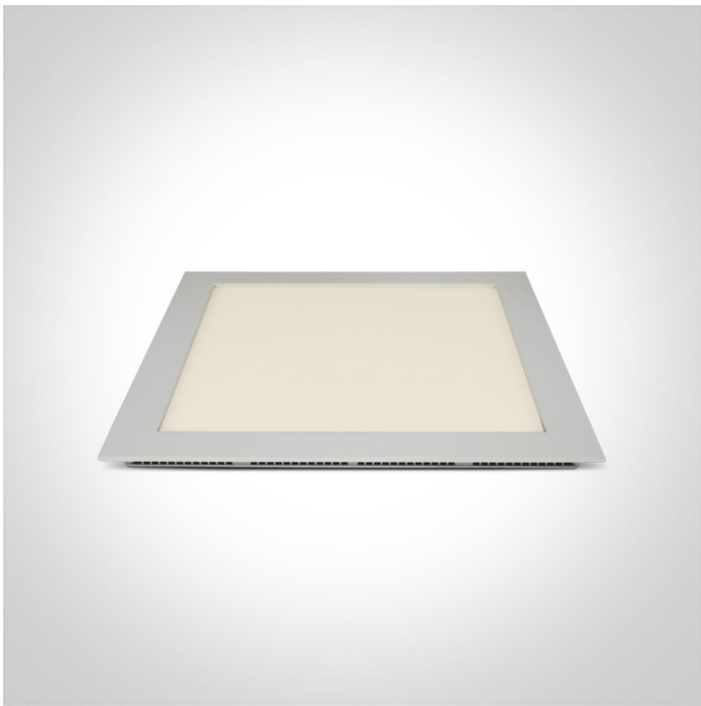


06 Downlights Fixed LED>The 16-30W Square Recessed Panels CCT V

50130FA/W/V



CCT Variable 30W slim downlight LED, IP20, ideal for commercial applications such as offices, galleries and showrooms.

Supplied with 800mA non-dimmable LED driver.

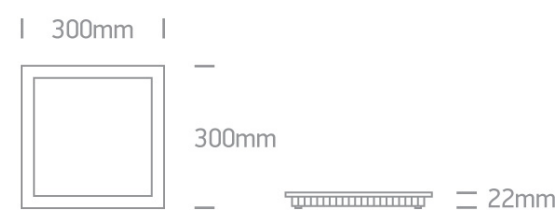
Complies with standard EN60598-1 and any other specific standards.



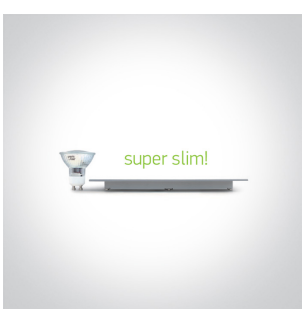
Downloads



Dimensions



Gallery






Physical Specification


Item Group	06 Downlights Fixed LED
Family	The 16-30W Square Recessed Panels CCT V
Order Code	50130FA/W/V
Colour	White
Material	Die Cast
Diffuser Material	Acrylic
Shape	Rectangular

Length	300mm
Width	300mm
Height	22mm
Cutout Hole Width	280mm
Cutout Hole Length	280mm
Recessed Ceiling	Yes
Depth Required	50mm
Indoor	Yes
Adjustable	No


Electrical Characteristics

Gear	External-Included
Fitting + Driver	
Input Voltage	220-240V
50 Hz	Yes
60 Hz	Yes
Safety Class	
Power(Watts)	30W
IP Rating	IP20
Light Source	LED built in
Dimmable	No
F Mark	

Fitting	
Input Type	Constant Current
Input Current	800mA
Safety Class	
IP Rating	IP20
Light Source	LED built in
LED Type	SMD 2835

LED Brand	Epistar
LED Number	240
Gear	
Gear Type	Led Driver
Input Voltage	220-240V
50 Hz	Yes
60 Hz	Yes
Power(Watts)	20-32W
Constant Current	Yes
800mA	25-40
IP Rating	IP20
Safety Class	
Dimmable	No
Ambient Temp	50°C
Operating Temp	75°C
Housing Material	Plastic
Brand	Lifud

Illumination Data

Colour Temperature	3000K-4000K-5700K
Lumen Output	3000lm
Light Efficiency	100lm/W
CRI	80
Beam Angle	120°
Illumination Diagram	

Packing Info

Pcs/Carton	12
Barcode	5291889078999

HS Code

9405119090

Certification & Warranty

Warranty

3 years

Weee Directive

Yes

switch to
one light!

one
LIGHT

