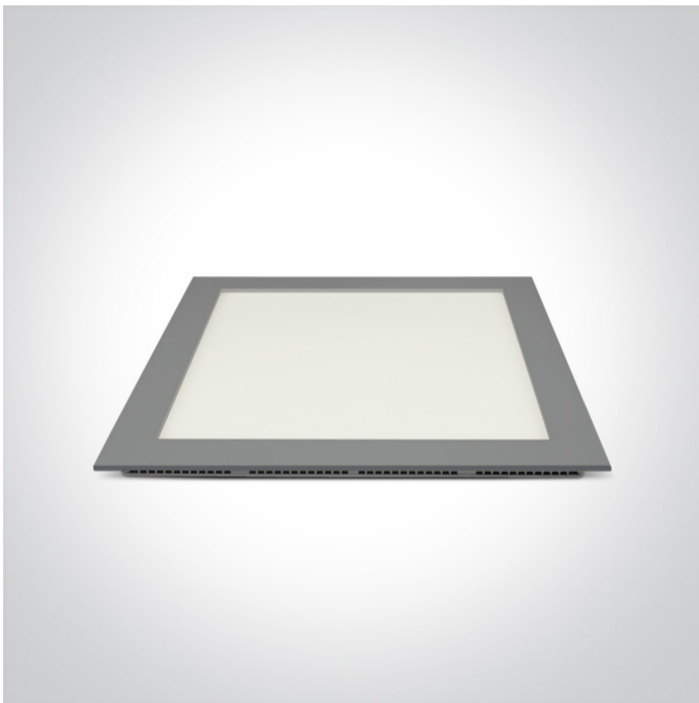


06 Downlights Fixed LED>The 22-30W Square Recessed Panels Die cast

50130F/G/C



30W slim downlight LED, IP40, ideal for commercial applications such as offices, galleries and showrooms.

Supplied with 1000mA non-dimmable LED driver.

Complies with standard EN60598-1 and any other specific standards.



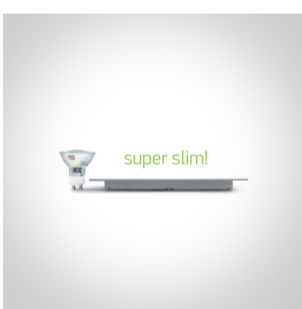
## Downloads



## Dimensions



## Gallery






## Physical Specification

Item Group	06 Downlights Fixed LED
Family	The 22-30W Square Recessed Panels Die cast
Order Code	50130F/G/C
Colour	Grey
Material	Die Cast
Diffuser Material	Acrylic
Shape	Rectangular

Length	300mm
Width	300mm
Height	20mm
Cutout Hole Width	284mm
Cutout Hole Length	284mm
Recessed Ceiling	Yes
Depth Required	40mm
Indoor	Yes
Adjustable	No


### Electrical Characteristics

Gear	External-Included
Fitting + Driver	
Input Voltage	100-240V
50 Hz	Yes
60 Hz	Yes
Safety Class	
Power(Watts)	30W
IP Rating	IP40
Light Source	LED built in
Dimmable	No
F Mark	


Fitting	
Input Type	Constant Current
Input Current	1000mA
Voltage	28V
Safety Class	
Power(Watts)	28W
IP Rating	IP40

Light Source	LED built in
LED Type	SMD 2016
LED Brand	Epistar
LED Number	208

## Gear

Gear Type	Led Driver
Input Voltage	100-240V
50 Hz	Yes
60 Hz	Yes
Power(Watts)	23-28W
Power Factor	0,9
Constant Current	Yes
1000mA	23-28V
IP Rating	IP20
Safety Class	
Dimmable	No
Ambient Temp	40°C
Operating Temp	85°C
Housing Material	Plastic
Brand	ONE LIGHT Ltd

## Illumination Data

Colour Temperature	4000K
Lumen Output	2174lm
Light Efficiency	72lm/W
CRI	80
Beam Angle	120°
Illumination Diagram	

## Packing Info

Box Length	37cm
Box Width	31cm
Box Height	3cm
Box Weight	1,5Kg
Pcs/Carton	10
Barcode	5291889039921
HS Code	9405409900

#### Certification & Warranty

Warranty	2 Years
Average Lifetime	30000 hours
Weee Directive	Yes

switch to  
**one light!**

one  
LIGHT

