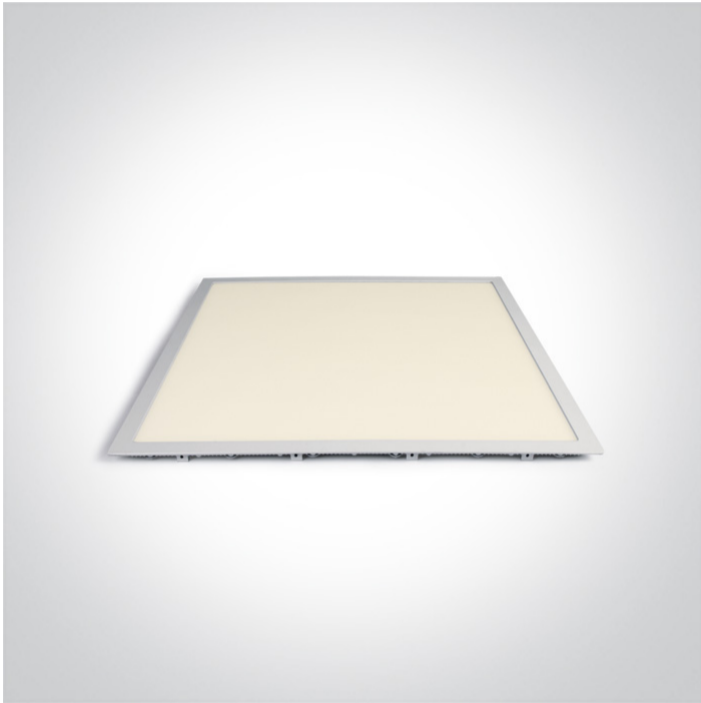


06 Downlights Fixed LED>The 48W Square Recessed Panel Die cast

## 50148PE/W/W



48W slim downlight LED, IP40, ideal for commercial applications such as offices, galleries and showrooms.

Requires 1200mA LED driver.

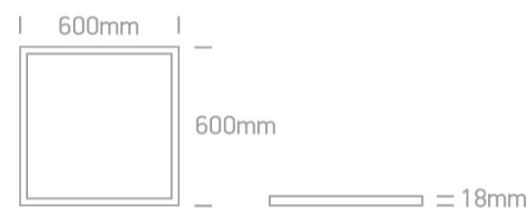
Complies with standard EN60598-1 and any other specific standards.



### Downloads



### Dimensions



### Gallery



### Must be ordered separately



89048

## Related items



89048T



89050L



89050TLD

## Physical Specification


Item Group	06 Downlights Fixed LED
Family	The 48W Square Recessed Panel Die cast
Order Code	50148PE/W/W
Colour	White
Material	Die Cast
Diffuser Material	Acrylic
Shape	Rectangular
Length	600mm
Width	600mm
Height	18mm
Cutout Hole Width	585mm
Cutout Hole Length	585mm
Recessed Ceiling	Yes
Depth Required	80mm
Indoor	Yes
Adjustable	No

## Electrical Characteristics

Fitting	
Input Type	Constant Current
Input Current	1200mA
Safety Class	III
Power(Watts)	48W

IP Rating	IP20
Light Source	LED built in
LED Type	SMD 2835
LED Brand	Epistar
LED Number	240

#### Illumination Data

Colour Temperature	3000K
Lumen Output	3900lm
Light Efficiency	81,25lm/W
CRI	80
Beam Angle	120°
Illumination Diagram	

#### Packing Info

Box Length	72cm
Box Width	65cm
Box Height	4,5cm
Box Weight	4,05Kg
Pcs/Carton	4
Barcode	5291889041924
HS Code	9405109890

#### Certification & Warranty

Warranty

2 Years

Average Lifetime

30000 hours

Weee Directive

Yes

switch to  
**one light!**

one  
LIGHT

