

## 04 Recessed Spots Adjustable LED>The 12W COB Range

### 51112/AL/W



12W COB LED Recessed Adjustable Spot.

Requires 700mA driver.

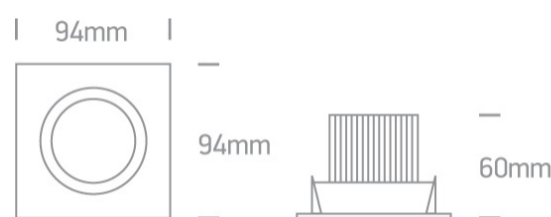
Complies with standard EN60598-1 and any other specific standards



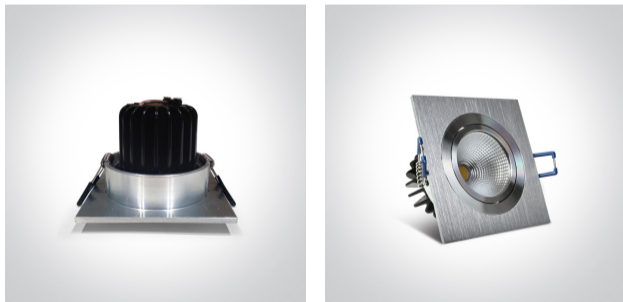
#### Downloads



#### Dimensions



#### Gallery



#### Must be ordered separately



89015A

Related items




89015AT

Physical Specification


Item Group	04 Recessed Spots Adjustable LED
Family	The 12W COB Range
Order Code	51112/AL/W
Colour	Aluminium
Material	Natural Aluminium
Shape	Rectangular
Length	94mm
Width	94mm
Height	60mm
Cutout Hole Diameter	80mm
Recessed Ceiling	Yes
Depth Required	90mm
Indoor	Yes
Adjustable	1 Direction

Electrical Characteristics

Fitting	
Input Type	Constant Current
Input Current	700mA
Voltage	14-16V
Safety Class	III
Power(Watts)	12W
IP Rating	IP20

Light Source	LED built in
LED Type	COB
LED Brand	Epistar
LED Number	1
Cable Length	40cm
F Mark	

#### Illumination Data

Colour Temperature	3000K
Lumen Output	1100lm
Light Efficiency	91,67lm/W
CRI	80
Beam Angle	38°
Illumination Diagram	

#### Packing Info

Box Length	11cm
Box Width	9cm
Box Height	9cm
Box Weight	0,304Kg
Pcs/Carton	50
Barcode	5291889042525
HS Code	9405409900

Warranty

2 Years

Weee Directive

Yes

switch to  
**one light!**

one  
LIGHT

