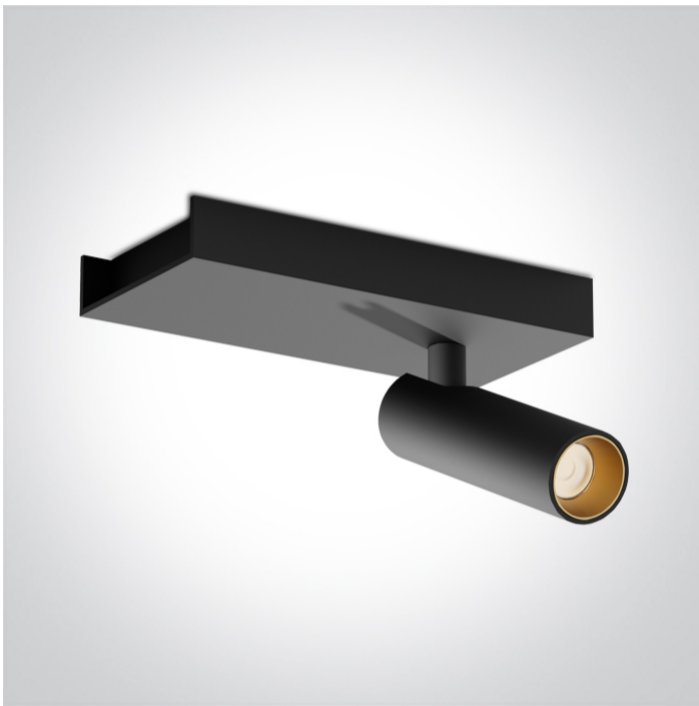


New 2025 Edition 2>Wall & Ceiling LED

65004A/B/W



5W COB LED adjustable ceiling light.

Supplied with 500mA driver. Complete with Black, Brass & White reflectors.

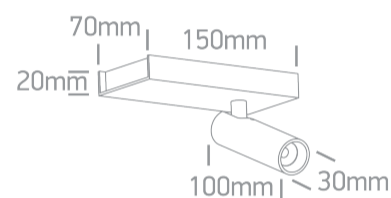
Complies with standard EN60598-1 and any other specific standards.



Downloads





Dimensions




Physical Specification

| | |
|-----------------|--------------------|
| Item Group | New 2025 Edition 2 |
| Family | Wall & Ceiling LED |
| Order Code | 65004A/B/W |
| Colour | Black |
| Material | Aluminium |
| Shape | Rectangular |
| Height | 100mm |
| Surface Ceiling | Yes |
| Surface Wall | Yes |
| Indoor | Yes |
| Adjustable | 2 Directions |

| Gear | External-Included |
|------------------|---|
| Fitting + Driver | |
| Input Voltage | 220-240V |
| 50 Hz | Yes |
| 60 Hz | Yes |
| Safety Class |  |
| Power(Watts) | 5W |
| IP Rating | IP20 |
| Light Source | LED built in |
| Dimmable | No |
| F Mark |  |

| Fitting | |
|---------------|------------------|
| Input Type | Constant Current |
| Input Current | 500mA |
| IP Rating | IP20 |
| Light Source | LED built in |
| LED Type | COB |
| LED Number | 1 |

| Gear | |
|------------------|---|
| Gear Type | Led Driver |
| Input Voltage | 220-240V |
| 50 Hz | Yes |
| 60 Hz | Yes |
| Constant Current | Yes |
| 500mA | 5-12V |
| IP Rating | IP20 |
| Safety Class |  |

Dimmable

No

Illumination Data

Colour Temperature

3000K

Lumen Output

450lm

Light Efficiency

90lm/W

CRI

90

Illumination Diagram



Packing Info

Pcs/Carton

30

Barcode

5291889082071

HS Code

9405413990

Certification & Warranty

Warranty

5 years

switch to
one light!

one
LIGHT

