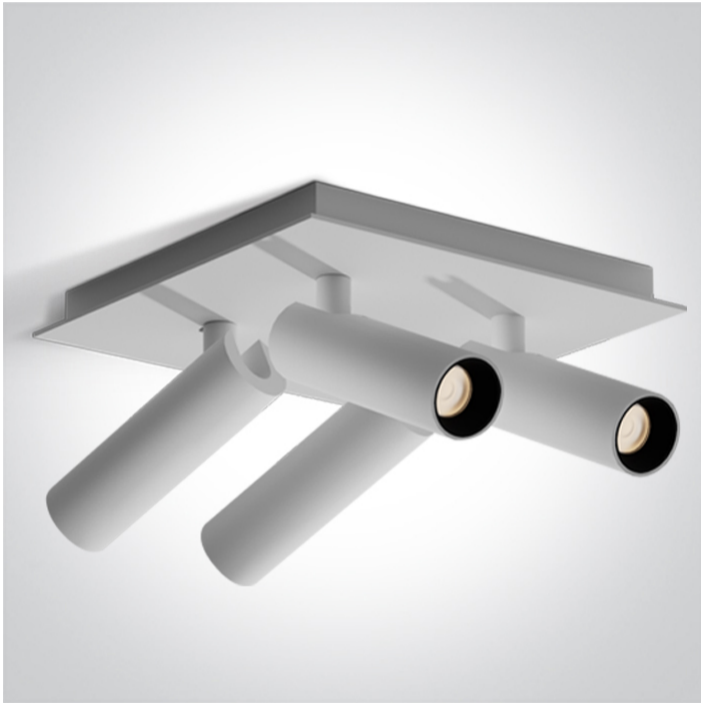


New 2025 Edition 2>Wall & Ceiling LED

65004E/W/W



4x5W COB LED adjustable ceiling light.

Supplied with 500mA driver. Complete with Black, Brass & White reflectors.

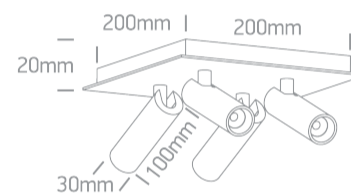
Complies with standard EN60598-1 and any other specific standards.



Downloads





Dimensions




Physical Specification

| | |
|-----------------|--------------------|
| Item Group | New 2025 Edition 2 |
| Family | Wall & Ceiling LED |
| Order Code | 65004E/W/W |
| Colour | White |
| Material | Aluminium |
| Shape | Circular |
| Height | 100mm |
| Diameter | 30mm |
| Surface Ceiling | Yes |
| Indoor | Yes |
| Adjustable | 2 Directions |

| Gear | External-Included |
|------------------|---|
| Fitting + Driver | |
| Input Voltage | 220-240V |
| 50 Hz | Yes |
| 60 Hz | Yes |
| Safety Class |  |
| Power(Watts) | 4x5W |
| IP Rating | IP20 |
| Light Source | LED built in |
| Dimmable | No |
| F Mark |  |

| Fitting | |
|--------------|------------------|
| Input Type | Constant Current |
| IP Rating | IP20 |
| Light Source | LED built in |
| LED Type | COB |
| LED Number | 1 |

| Gear | |
|------------------|---|
| Gear Type | Led Driver |
| Input Voltage | 220-240V |
| 50 Hz | Yes |
| 60 Hz | Yes |
| Constant Current | Yes |
| 500mA | 42V max |
| IP Rating | IP20 |
| Safety Class |  |
| Dimmable | No |

Illumination Data

Colour Temperature 3000K

Lumen Output 1800lm

Light Efficiency 90lm/W

CRI 90

Illumination Diagram 

Packing Info

Box Weight 1.600kg

Pcs/Carton 6

Barcode 5291889082149

HS Code 9405413990

Certification & Warranty

Warranty 5 years

switch to
one light!

one
LIGHT

