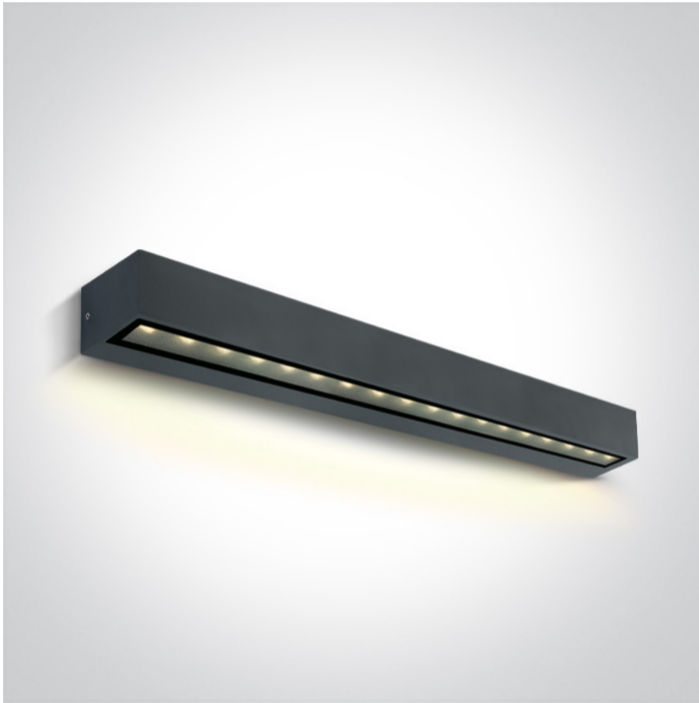


13 Wall & Ceiling LED>Linear Outdoor Series Simple Sided

67526A3/AN/W



13W Wall light, IP65.

Complete with 700mA driver.

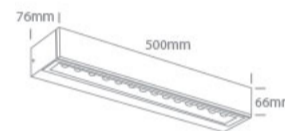
Complies with standard EN60598-1 and any other specific standards.



Downloads



Dimensions



Physical Specification

Item Group	13 Wall & Ceiling LED
Family	Linear Outdoor Series Simple Sided
Order Code	67526A3/AN/W
Colour	Anthracite
Material	Die Cast
Shape	Rectangular
Length	500mm
Width	76mm
Height	66mm
Surface Wall	Yes
Indoor	Yes
Outdoor	Yes

Adjustable No

IK Rating 7

Electrical Characteristics

Gear

Built In

Fitting + Driver

Input Voltage 220-240V

50 Hz Yes

60 Hz Yes

Safety Class 

Power(Watts) 13W

IP Rating IP65

Light Source LED built in

Dimmable No

F Mark 

Fitting

Input Type Constant Current

Input Current 700mA

Voltage 16V

Safety Class 

Power(Watts) 11,2W

IP Rating IP65

Light Source LED built in


LED Type SMD 3030

LED Brand Osram


Gear

Gear Type Led Driver

Input Voltage 220-240V

50 Hz	Yes
60 Hz	Yes
Power(Watts)	7,7-12,95W
Power Factor	0,9
Constant Current	Yes
700mA	11-18,5v
IP Rating	IP20
Safety Class	
Dimmable	No
Housing Material	Plastic
Brand	Eaglerise
Protection	0

Illumination Data

Colour Temperature	3000K
Lumen Output	780lm
Light Efficiency	60lm/W
CRI	80
Illumination Diagram	

Packing Info

Box Weight	2.520kg
Pcs/Carton	4
Barcode	5291889075851
HS Code	9405413990

Certification & Warranty

switch to
one light!

one
LIGHT

